

TOLEDO BLADE BOULEVARD ROAD REHABILITATION PHASE III

Legend

- Stop Bar
- Yellow Curb Paint
- Double Yellow
- Yellow Skip
- Solid Yellow
- White Skip
- Solid White
- Turn Arrows
- ★ Crosswalk Location
- Stamped Concrete
- Asphalt

Streets

- Arterial Roads
- Collector Roads
- Local Roads
- Private Roads
- State Roads



Disclaimer: This map is for reference purposes only and is not to be construed as a legal document. Any reliance on the information contained herein is at the user's risk. The City of North Port and its agents assume no responsibility for any use of the information contained herein or any loss resulting there from.

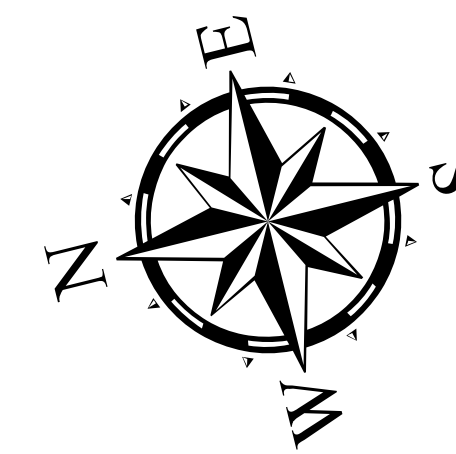
Date Saved: 7/4/2023 1:59 PM

Path: M:\Departments\PublicWorks\DataAnalyst\GIS\ROADS\ToledoBladeResurfacing\ToledoBladeResurfacing.aprx



- Legend**
- Stop Bar
 - Double Yellow
 - Yellow Curb Paint
 - Yellow Skip
 - Solid Yellow
 - White Skip
 - Solid White
 - ★ Crosswalk Location
 - Turn Arrows
 - Stamped Concrete
 - Asphalt
- Streets**
- Arterial Roads
 - Collector Roads
 - Local Roads
 - Private Roads
 - State Roads

TOLEDO BLADE BOULEVARD ROAD REHABILITATION PHASE III



Disclaimer: This map is for reference purposes only and is not to be construed as a legal document. Any reliance on the information contained herein is at the user's risk. The City of North Port and its agents assume no responsibility for any use of the information contained herein or any loss resulting there from.

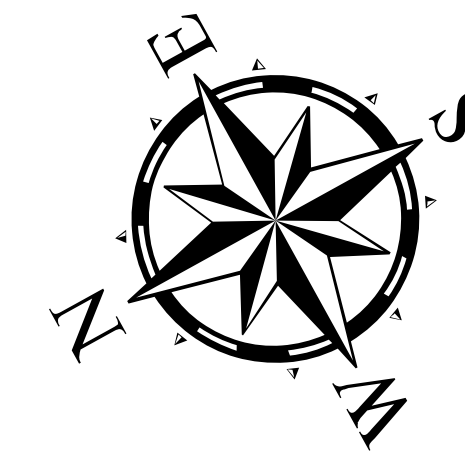
Date Saved: 7/4/2023 1:59 PM

Path: M:\Departments\PublicWorks\DataAnalyst\GIS\ROADS\ToledoBladeResurfacing\ToledoBladeResurfacing.aprx



- Legend**
- Stop Bar
 - Double Yellow
 - Yellow Curb Paint
 - Yellow Skip
 - Solid Yellow
 - White Skip
 - Solid White
 - ★ Crosswalk Location
 - Turn Arrows
 - Stamped Concrete
 - Asphalt
- Streets**
- Arterial Roads
 - Collector Roads
 - Local Roads
 - Private Roads
 - State Roads

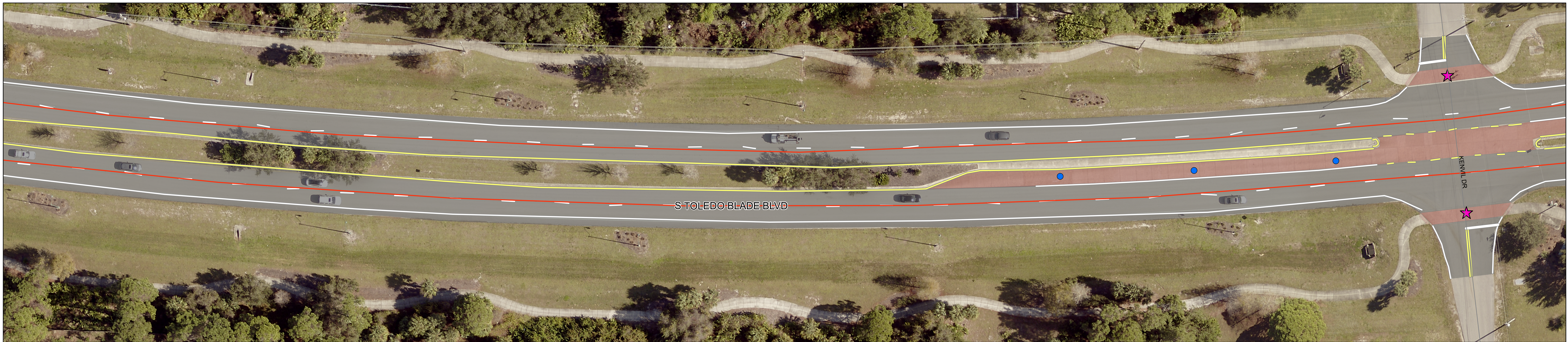
TOLEDO BLADE BOULEVARD ROAD REHABILITATION PHASE III



Disclaimer: This map is for reference purposes only and is not to be construed as a legal document. Any reliance on the information contained herein is at the user's risk. The City of North Port and its agents assume no responsibility for any use of the information contained herein or any loss resulting there from.

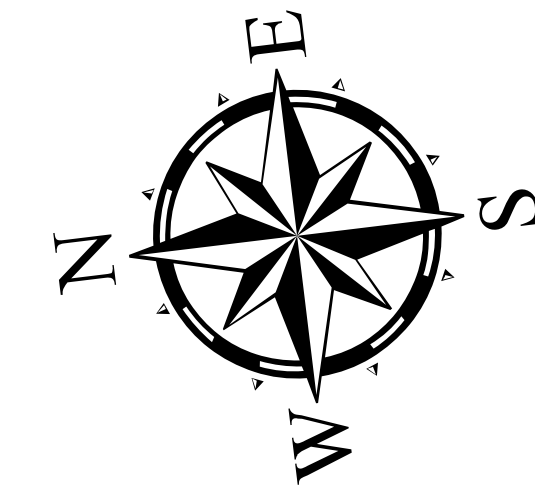
Date Saved: 7/4/2023 2:01 PM

Path: M:\Departments\PublicWorks\DataAnalyst\GIS\ROADS\ToledoBladeResurfacing\ToledoBladeResurfacing.aprx



- Legend**
- Stop Bar
 - Double Yellow
 - Yellow Curb Paint
 - Yellow Skip
 - Solid Yellow
 - White Skip
 - Solid White
 - ★ Crosswalk Location
 - Turn Arrows
 - Stamped Concrete
 - Asphalt
- Streets**
- Arterial Roads
 - Collector Roads
 - Local Roads
 - Private Roads
 - State Roads

TOLEDO BLADE BOULEVARD ROAD REHABILITATION PHASE III



Disclaimer: This map is for reference purposes only and is not to be construed as a legal document. Any reliance on the information contained herein is at the user's risk. The City of North Port and its agents assume no responsibility for any use of the information contained herein or any loss resulting there from.

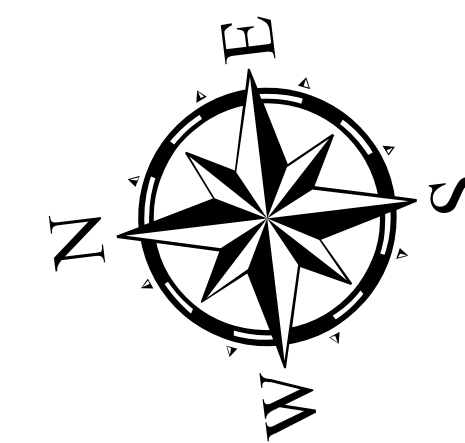
Date Saved: 7/4/2023 2:03 PM

Path: M:\Departments\PublicWorks\DataAnalyst\GIS\ROADS\ToledoBladeResurfacing\ToledoBladeResurfacing.aprx



- Legend**
- Stop Bar
 - Double Yellow
 - Yellow Curb Paint
 - Yellow Skip
 - Solid Yellow
 - White Skip
 - Solid White
 - ★ Crosswalk Location
 - Turn Arrows
 - Stamped Concrete
 - Asphalt
- Streets**
- Arterial Roads
 - Collector Roads
 - Local Roads
 - Private Roads
 - State Roads

TOLEDO BLADE BOULEVARD ROAD REHABILITATION PHASE III

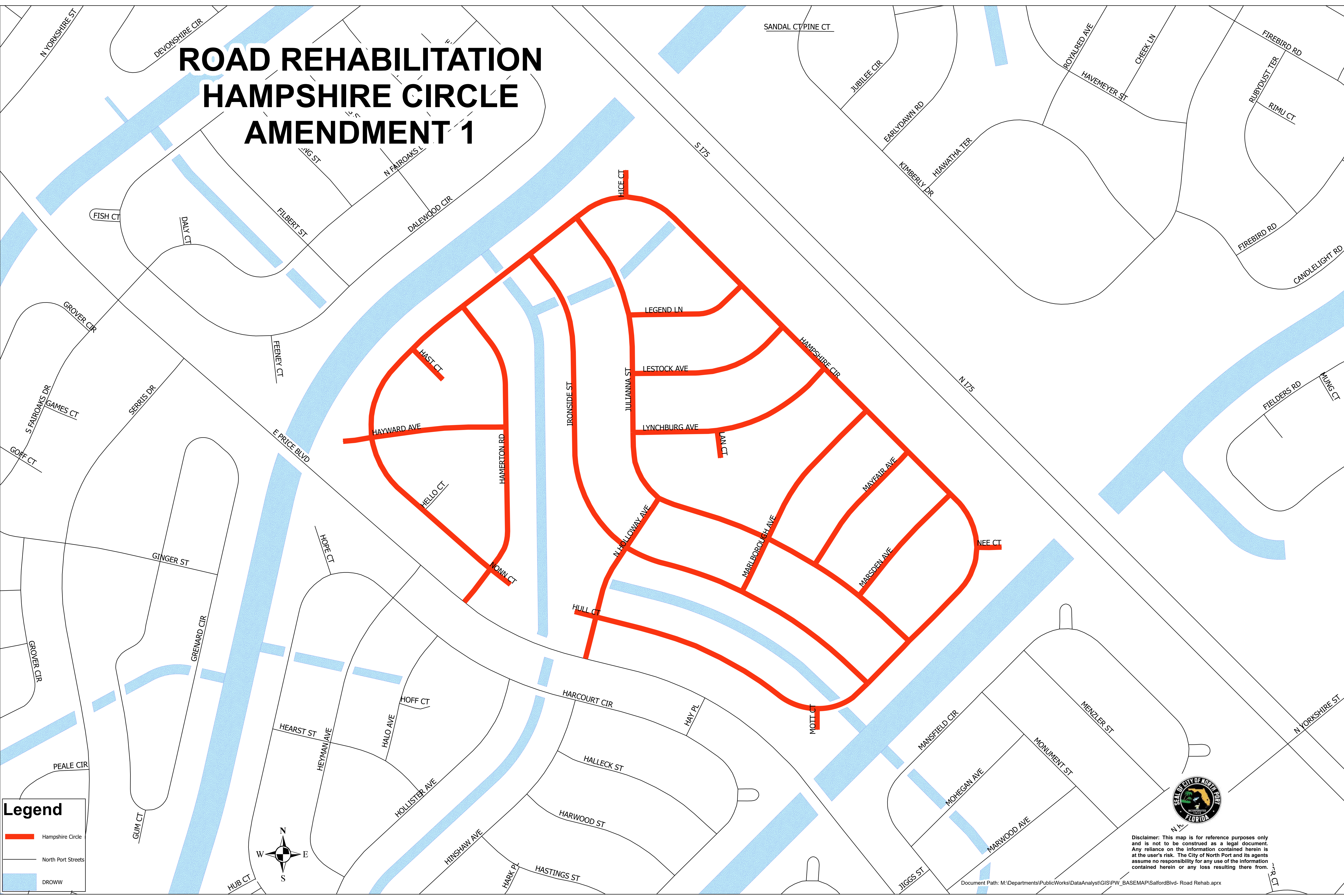


Disclaimer: This map is for reference purposes only and is not to be construed as a legal document. Any reliance on the information contained herein is at the user's risk. The City of North Port and its agents assume no responsibility for any use of the information contained herein or any loss resulting there from.

Date Saved: 7/4/2023 2:03 PM

Path: M:\Departments\PublicWorks\DataAnalyst\GIS\ROADS\ToledoBladeResurfacing\ToledoBladeResurfacing.aprx

ROAD REHABILITATION HAMPSHIRE CIRCLE AMENDMENT 1



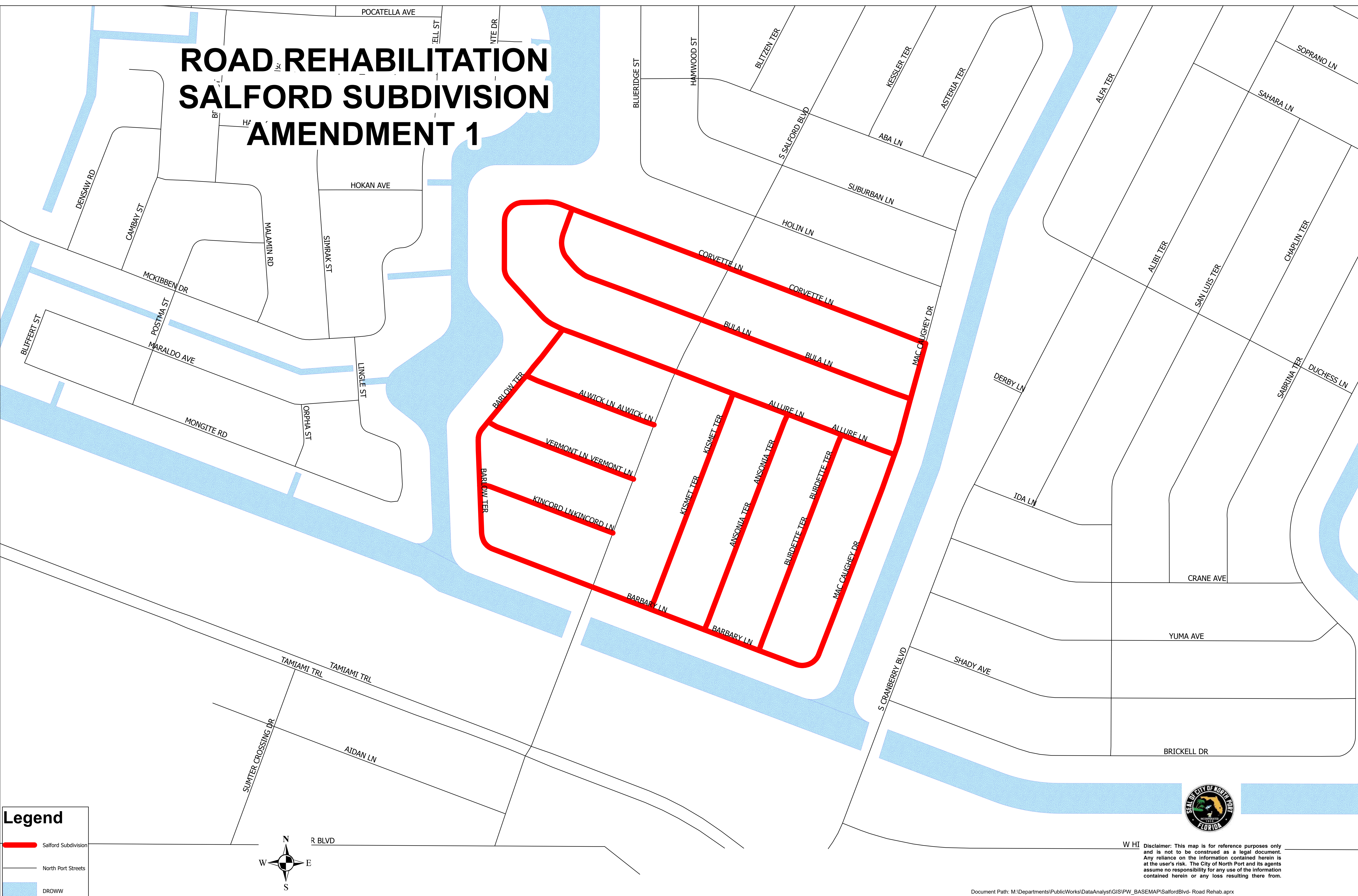
Legend

- Hampshire Circle
- North Port Streets
- DROWW



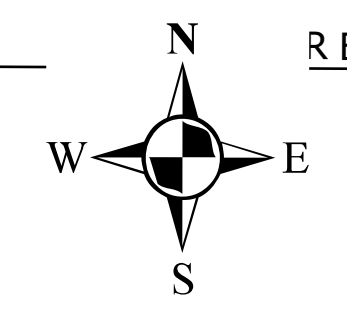
Disclaimer: This map is for reference purposes only and is not to be construed as a legal document. Any reliance on the information contained herein is at the user's risk. The City of North Port and its agents assume no responsibility for any use of the information contained herein or any loss resulting there from.

ROAD REHABILITATION SALFORD SUBDIVISION AMENDMENT 1



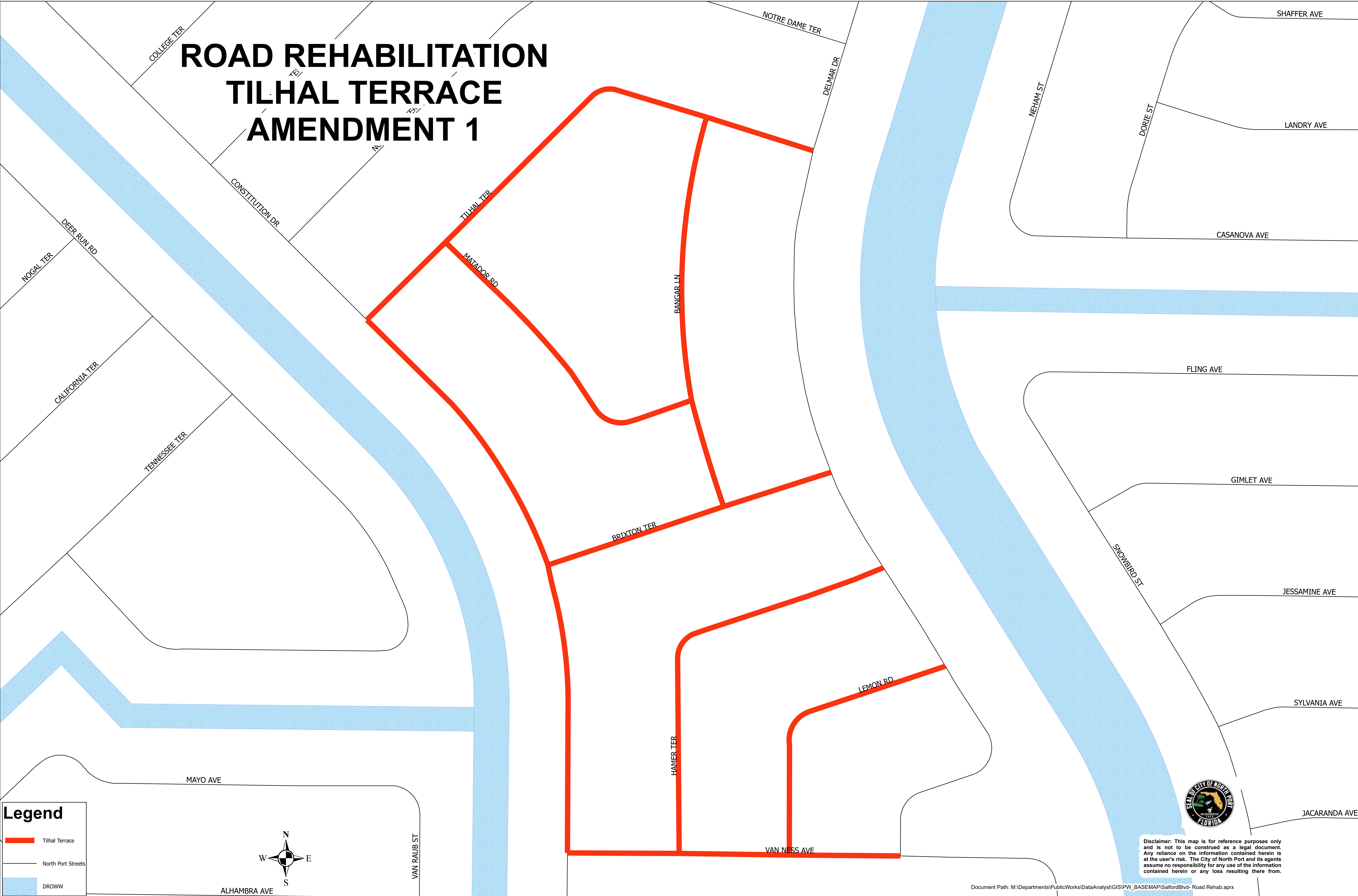
Legend

- Salford Subdivision
- North Port Streets
- DROWW



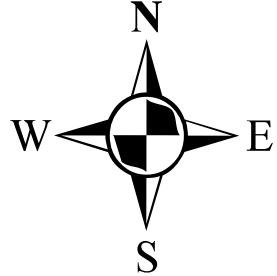
W HI Disclaimer: This map is for reference purposes only and is not to be construed as a legal document. Any reliance on the information contained herein is at the user's risk. The City of North Port and its agents assume no responsibility for any use of the information contained herein or any loss resulting there from.

ROAD REHABILITATION TILHAL TERRACE AMENDMENT 1



Legend

- Tilhal Terrace
- North Port Streets
- DROWW



Disclaimer: This map is for reference purposes only and is not to be construed as a legal document. Any reliance on the information contained herein is at the user's risk. The City of North Port and its agents assume no responsibility for any use of the information contained herein or any loss resulting there from.