

Three Graces

The sculpture at the entrance to Warm Mineral Springs is the "Three Graces" fountain, a 1958 gold anodized aluminum fountain featuring three women frolicking in water. Commissioned by the original owner, Sam Herron Jr., it was originally designed to be a wayfinding piece for the park, located at the intersection of Ortiz Boulevard and U.S. 41. The fountain is a historic landmark and a significant part of the area's mid-century heritage. [🔗](#)



- **Name:** "Three Graces" fountain [🔗](#)
- **Material:** Gold anodized aluminum [🔗](#)
- **Artist:** Sophie Johnstone [🔗](#)
- **Commissioned:** 1958 by Sam Herron Jr., the founder and previous owner of Warm Mineral Springs [🔗](#)
- **Location:** Intersection of Ortiz Boulevard and U.S. 41, the entrance to Warm Mineral Springs Park [🔗](#)
- **Significance:** It serves as a historic wayfinding piece and is considered a significant example of the area's mid-century cultural history [🔗](#)

Measurements:

Approx overall height: 15'

Circumference of circular base: 65'-10"

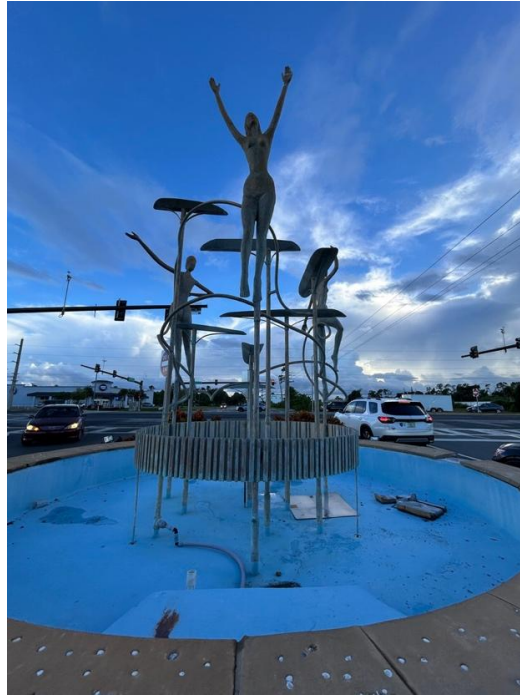




Intersection – sculpture on the right in the boulevard – where is it???



Looking north from Ortiz Blvd



Looking west from Ortiz Blvd





Looking east on Ortiz Blvd

West end: rectangular empty flower bed measurements:

12'-11" length x 3'-9" width x 27"H



East end: pump and lighting

Stone face to circular base





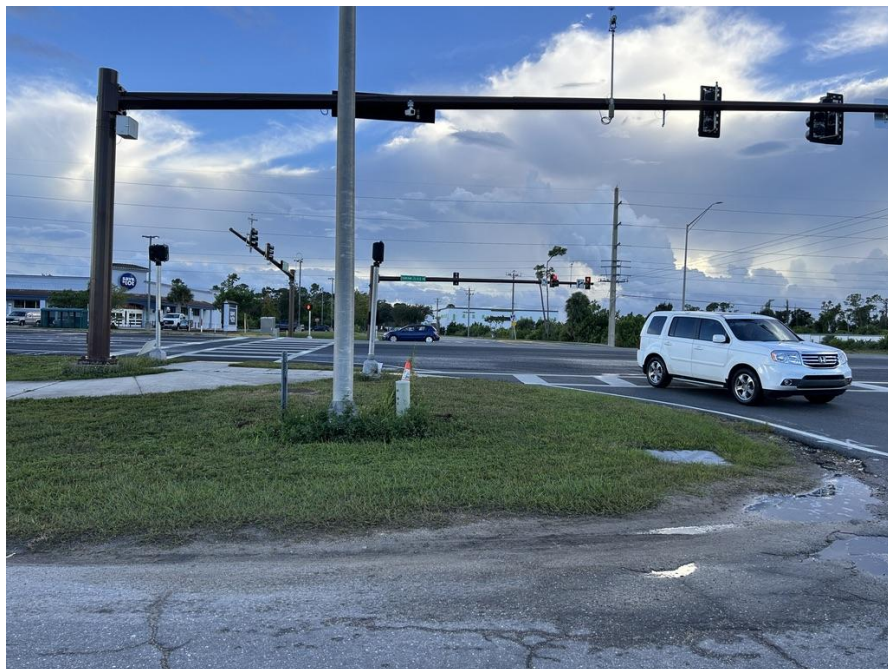
Concrete top with embedded shells.



Looking north from southeast corner



Looking west from northeast corner



Looking west from southeast corner

Recommendations

Reach out to County to:

- check/fix lights and pump
- fill cavern with water
- find out who oversees planting and maintenance of flower bed, and landscaping around the sculpture base

Design Enhancements

Add signage for sculpture

Add signage about Warm Mineral Springs (directional sign)

Create a couple of vertical stone walls to be positioned in-between the three dancing women to help pull the eye to the sculpture from a distance; illuminate well

Other???



Submitted by: Lyn Falk, member North Port Art Advisory Board 10/21/25