

CIP Detail Sheets

Project: P19AP4 | **Title:** Italy Avenue | **Status:** Existing CIP Project

Category: Parks & Recreation | **Department:** PUBLIC SERVICES | **LMS:** N/A

Comprehensive Plan Information

CIE Project: N/A | **Capital Improvement:** | **District:** | **Project Location:**
LOS/Concurrency: N/A | **Project Need:** N/A | **Location:**

Programmed Funding

grammed Funding	Appropriated To Date	Budgeted FY 2024	Non-Appropriated Programmed CIP Funding				Future Funding
			FY 2025	FY 2026	FY 2027	FY 2028	
992,500	992,500	0	0	0	0	0	0

Strategic Pillar

Quality of Life

Project Description

Development of parkland east of Toledo Blade Blvd. to meet Strategic Plan objectives and increased parkland access goals. No design services or park plans have been completed at this time. This site has been identified as a potential location for a second off-leash dog park.

Project Rationale

Referred to as the Italy Avenue parcel, this City owned tract is located east of Toledo Blade Blvd., south of Atwater Community Park, along the New London Waterway and is approximately 47 acres. This parcel has been identified as a location for a potential future park. In March 2020, the City Commission approved utilizing Colliers International to identify potential partners for the development of this parcel.

Funding Strategy

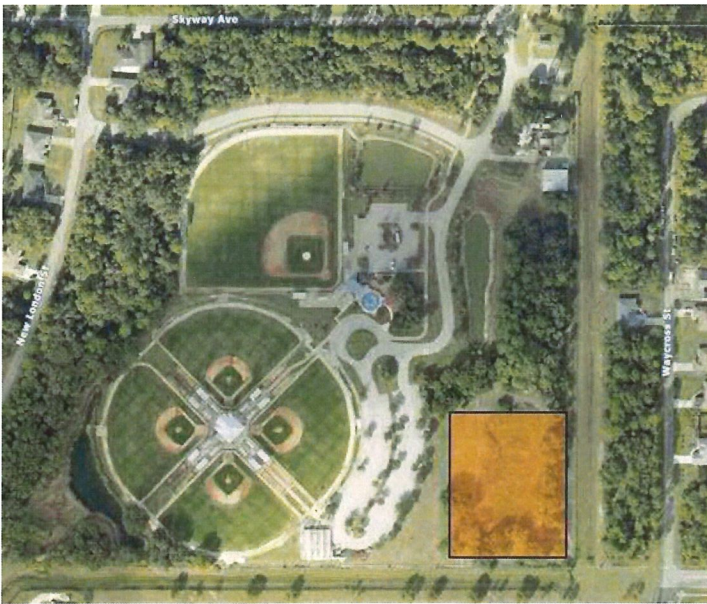
Utilizing a piggyback with Colliers International to potentially develop this park in conjunction with a partnership opportunity. This project is projected to utilize Park Impact Fees.

Expenditures To Date \$0

Operation Budget Impact

Impact on the operating budget will be determined based on the final design and amenities.

Project Image



Schedule of Activities

Project Activities	From - To	Amount
DESIGN/ENGINEERING	10/2020 - 09/2024	150,000
CONSTRUCTION	10/2021 - 09/2024	842,500
Total Budgetary Cost Estimate:		992,500

Means of Financing

Funding Source	Amount	
PRKS & REC IMPCT FEE FUND	992,500	
Total Programmed Funding:		992,500
Future Funding Requirements:		0