



North Port Natural Resources

Final Inspection Report

Date: 12/5/24

Inspectors Present: Aaron Zimmermann (Environmental Specialist), Ryan Pieper (Urban Forester), Shawn Ruff (Arborist), Jeremy Rogus (Arborist), and Shanell Bosch (Environmental Planner)

Location: South Chamberlain Blvd. North Port, FL 34286 (PIDs 1006008624 and 1006008623)

Photographer: Shanell Bosch

Contact: Stefan Kalev (skalev@northportfl.gov); Office: 941-429-7033

Description of Violation

Observations:

- Upon arrival, it was noted that numerous young and mature trees had been removed within the inspection area.
- The affected significant area cleared included various species of trees, notably *Pinus eliotti*, *Sabal palmetto*, and *Quercus virginiana*.

Details:

- An initial preliminary inspection was conducted by City staff on November, 21 2024 that have identified unauthorized cleared pathway throughout both parcels.
- A comprehensive follow-up inspection was conducted on December 5, 2024, to accurately document the unauthorized activity, based on the available site evidence.
- Evidence of tree removal included visible stumps, broken branches, uprooted trees and significant branch damage from heavy equipment, and wooden material cattered across the site.
- Observed potential wildlife violations include operating machinery near potentially occupied gopher tortoise burrows and activities that disturbed these burrows. The Florida Fish and Wildlife Conservation Commission (FWC) was notified of these events.



Documentation

Photos and Evidence:

- Photographs were taken to document the site conditions and the number of trees cut down.
- GPS coordinates were recorded to pinpoint the exact locations of each affected area.
- A detailed map of the site was created to indicate the areas where trees were removed.
- Each impacted tree was marked with a white spray paint marking.

Interviews and Statements:

- Statements were collected from nearby residents who reported the unauthorized activities.

Findings and Estimated Fines

Tree Count:

- A total of 172 trees were identified as being illegally removed.
- A total of 1,630 inches of impacted Diameter at Breast Height (DBH) of native trees was identified.
- No heritage tree impacts were identified at the site.
- The species and approximate size of the trees were documented based on the remaining uprooted trees on site as well as other visual evidence.

Impact Assessment:

- The removal of these trees has potential environmental impacts, including loss of habitat for local wildlife, increased erosion risk, and the overall public interest of the North Port Community.
- The violation of CHAPTER 6 - NATURAL RESOURCES, ARTICLE VII TREE PROTECTION REGULATIONS requires immediate attention to prevent further environmental damage.
- All estimated fees were accounted based on ARTICLE IX. – CODE ENFORCEMENT, Sec. 2-511 – Fines and Liens of the Code of the City of North Port, Florida.



Natural Resources Division

Tree Species	DBH (in)	Quantity (#)	Inches Subject to Fine under Chapter 6 - Tree Protection Regulations
Palm	9	14	126
Palm	10	21	210
Palm	11	34	374
Palm	12	37	444
Palm	13	13	169
Oak	3	11	33
Oak	4	9	36
Oak	5	9	45
Oak	6	6	36
Oak	7	7	49
Oak	8	5	40
Oak	9	1	9
Oak	10	2	20
Oak	11	1	11
Oak	12	1	12
Oak	16	1	16
Total		172	1,630
		\$100.00 per diameter inch	\$163,000

S Chamberlain Blvd, North Port, FL- Tree Compliance Photo Locations



December 5, 2024


□ Cadastral 2023 (Property Appraiser Parcels) - Public View

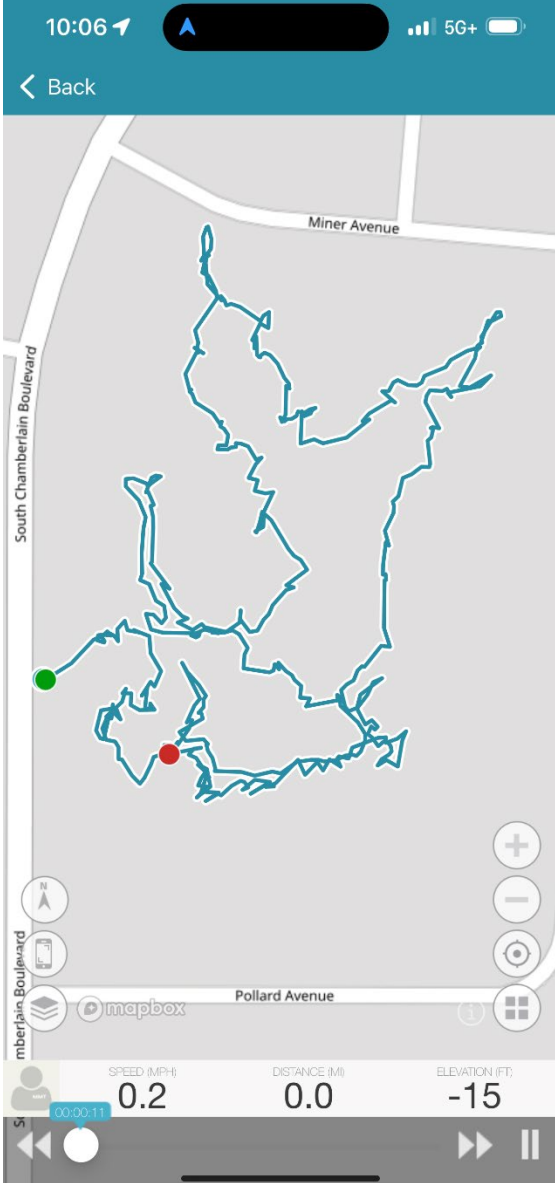
1:2,257
 0 0.03 0.05 0.1 mi
 0 0.04 0.07 0.15 km

Esri, HERE, Garmin, (c) OpenStreetMap contributors, and the GIS user community, FDEPWIM, ERP, Charlotte County, Mass, Microsoft, FSP, Esri, HERE, IFC, Bureau of Indian Affairs, Office of Trust Services, Division of Land Titles and Records, Branch of

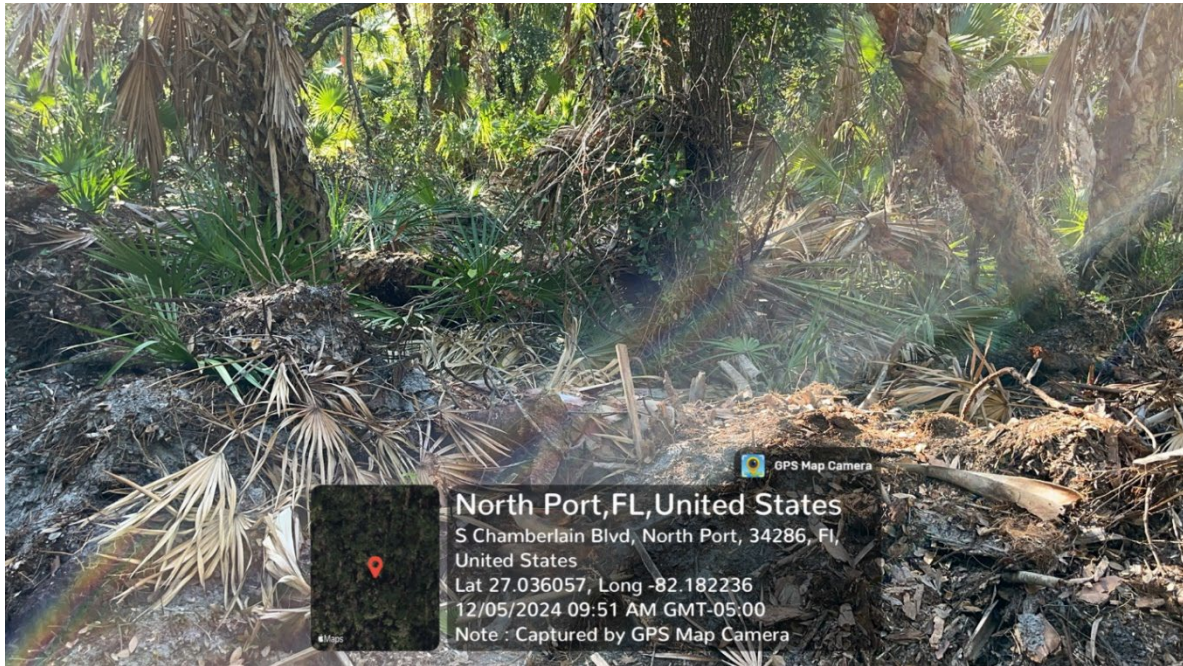
Map created by Map Direct, powered by ESRI. City of North Port
 Florida Department of Environmental Protection makes no warranty, expressed or implied, or assumes any legal liability or responsibility for the accuracy, completeness, or usefulness of any information, apparatus, product, or process disclosed, or represents that its use would not infringe privately owned rights.

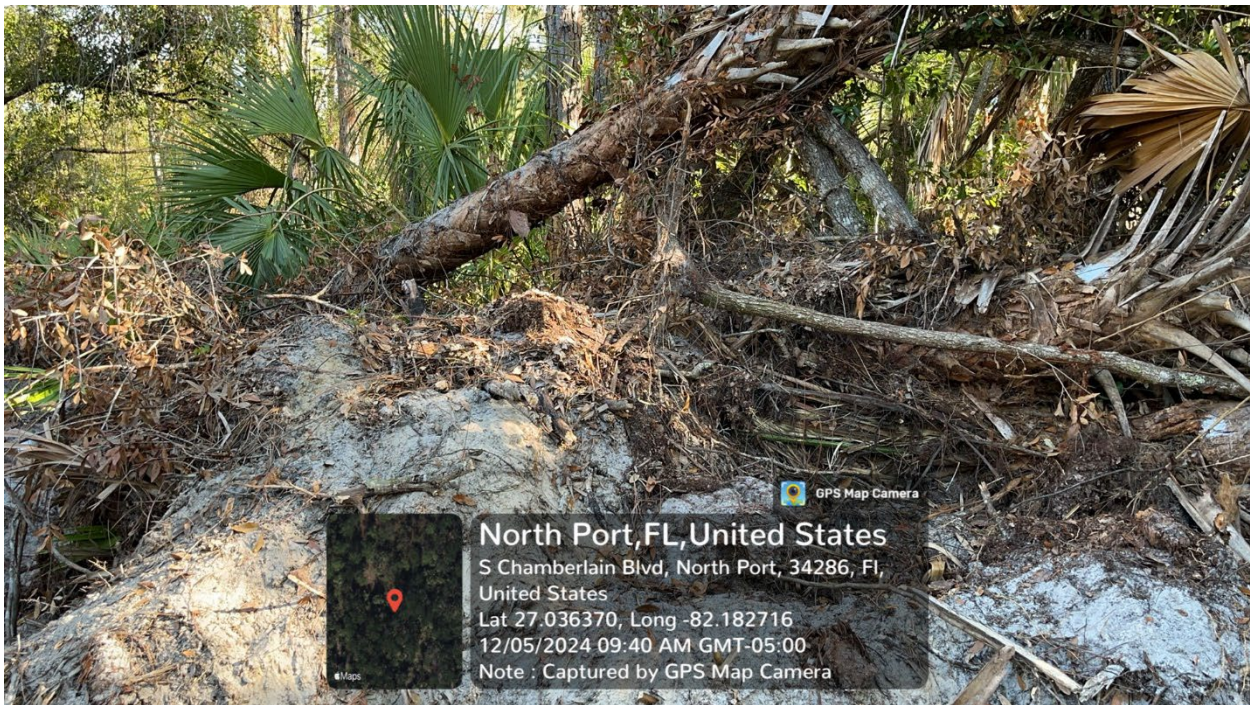
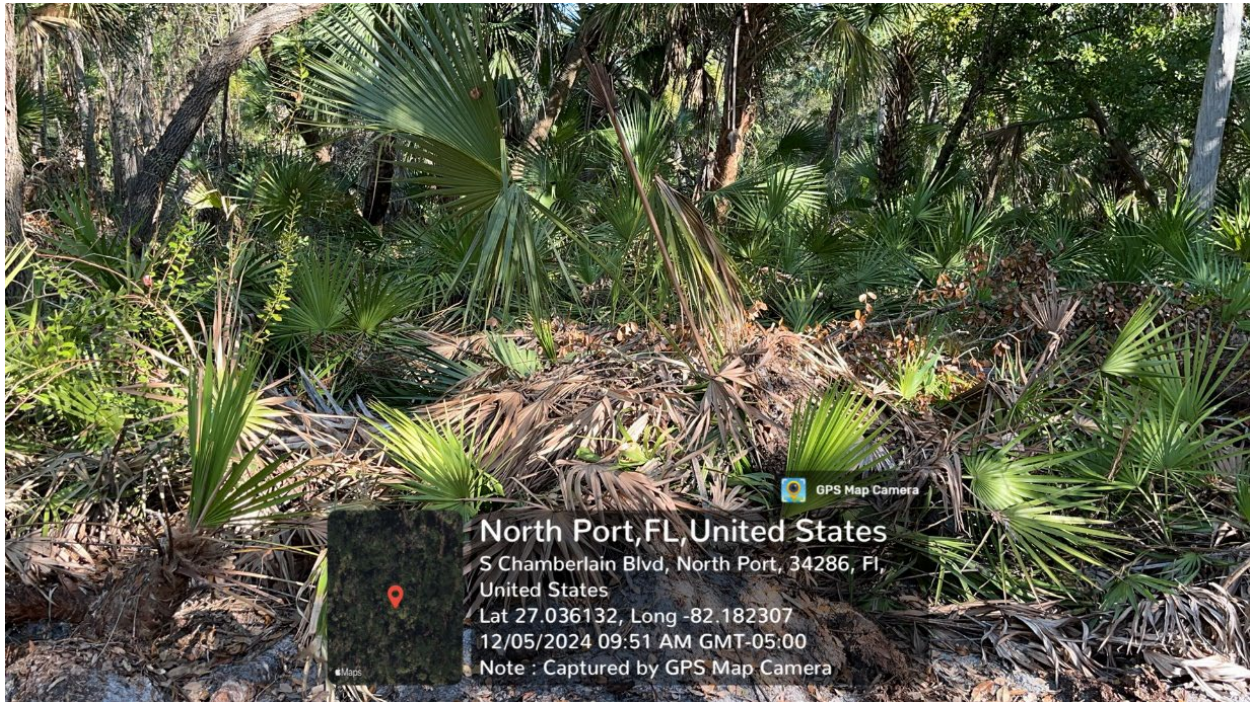
GPS location of all recorded photos and areas of non-compliance.

	<p>Various locations of photo documentation utilizing <i>GPS Map Camera</i> application.</p>
---	--

	<p>Staff walking path of impacted area.</p>
--	---

NorthPort
FLORIDA
Natural Resources Division

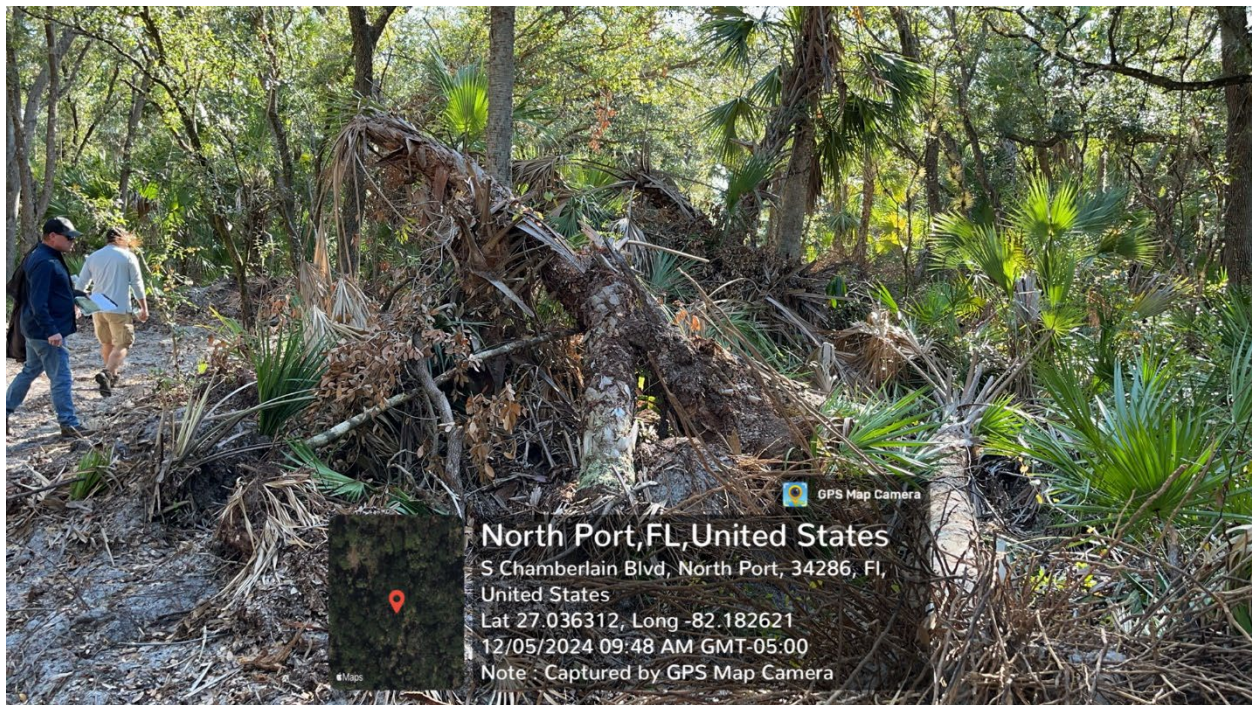
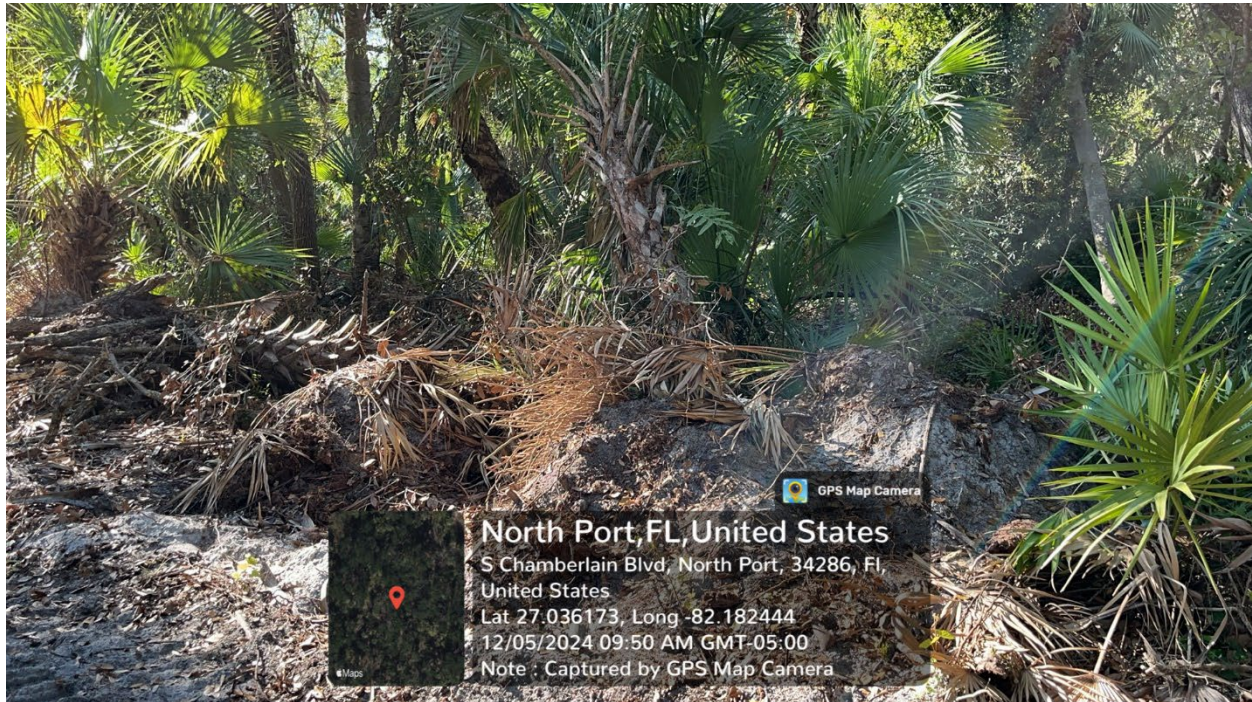


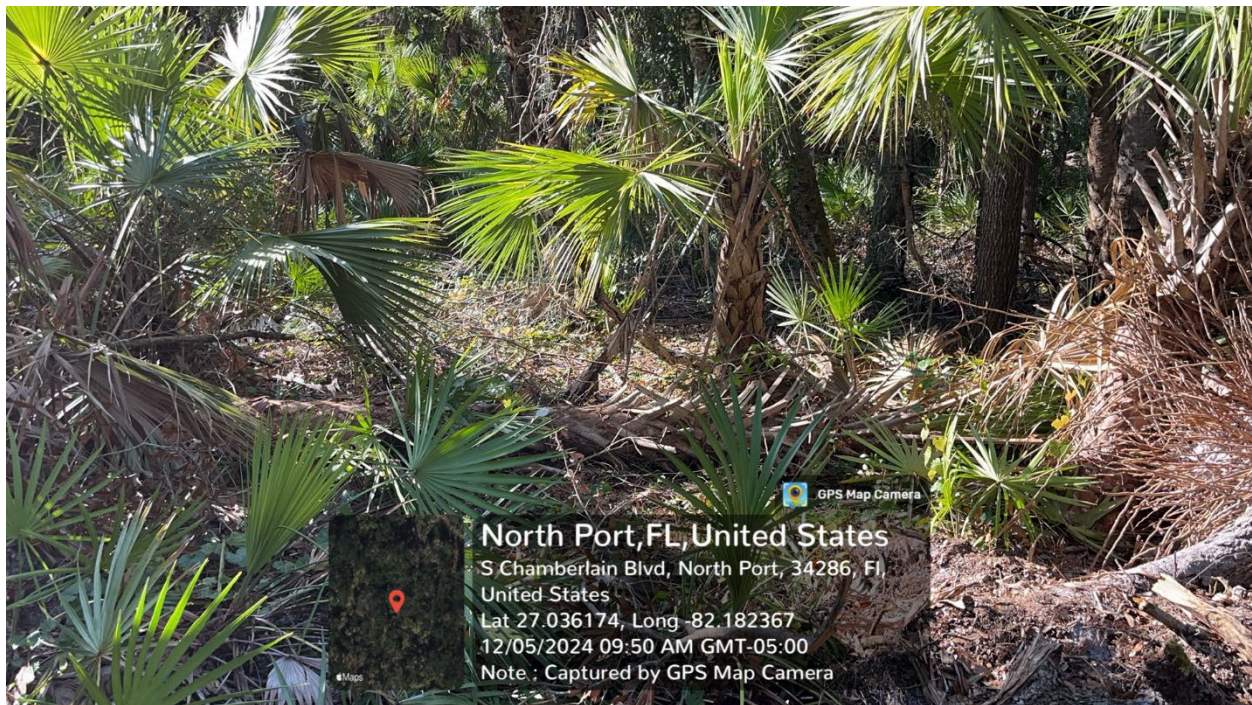




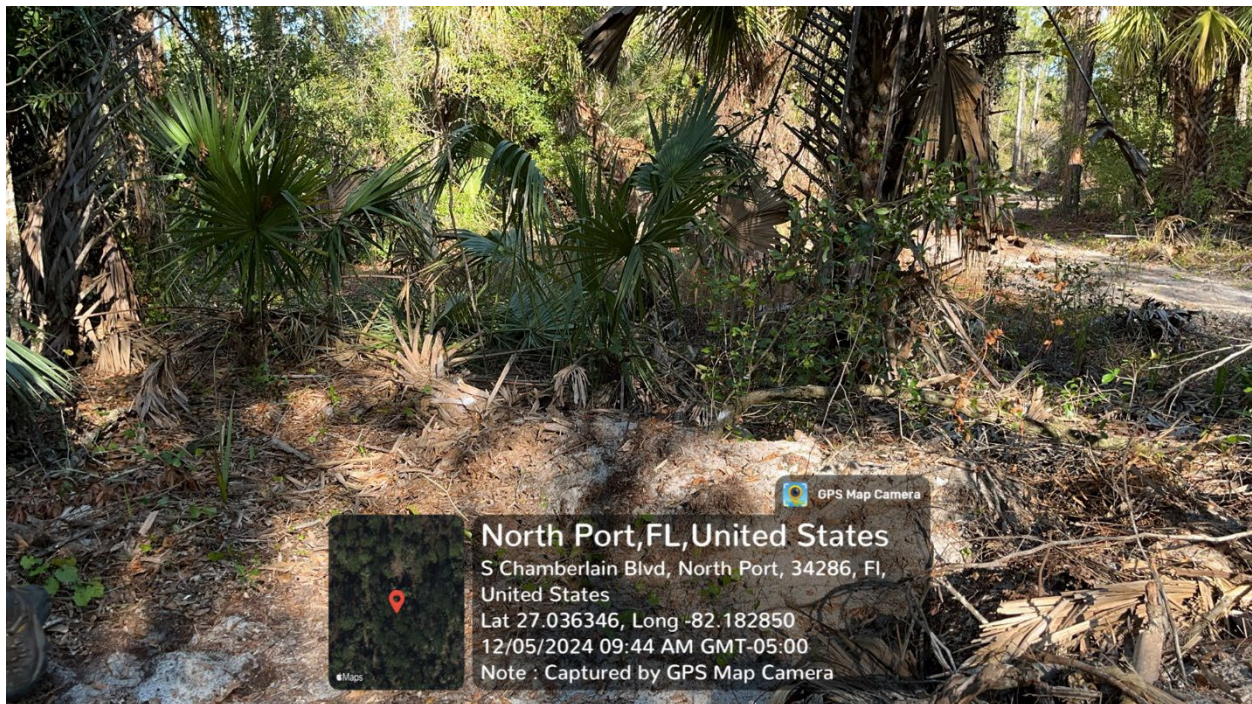
Natural Resources Division





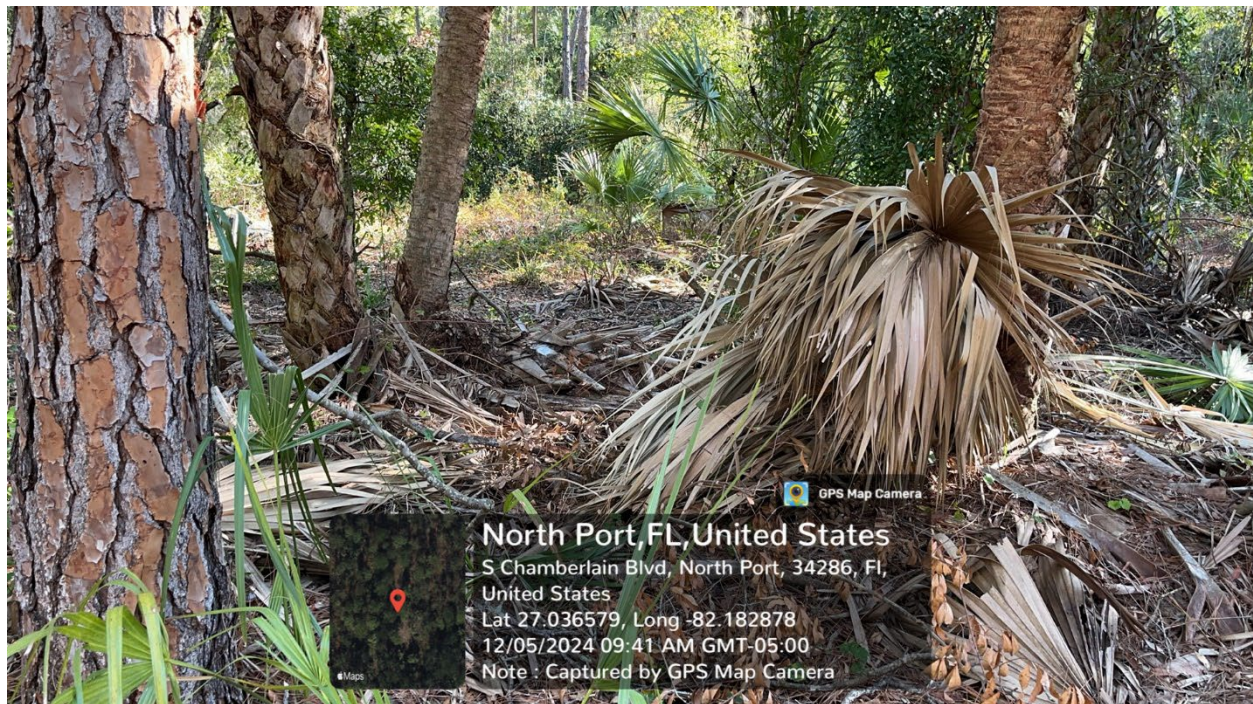
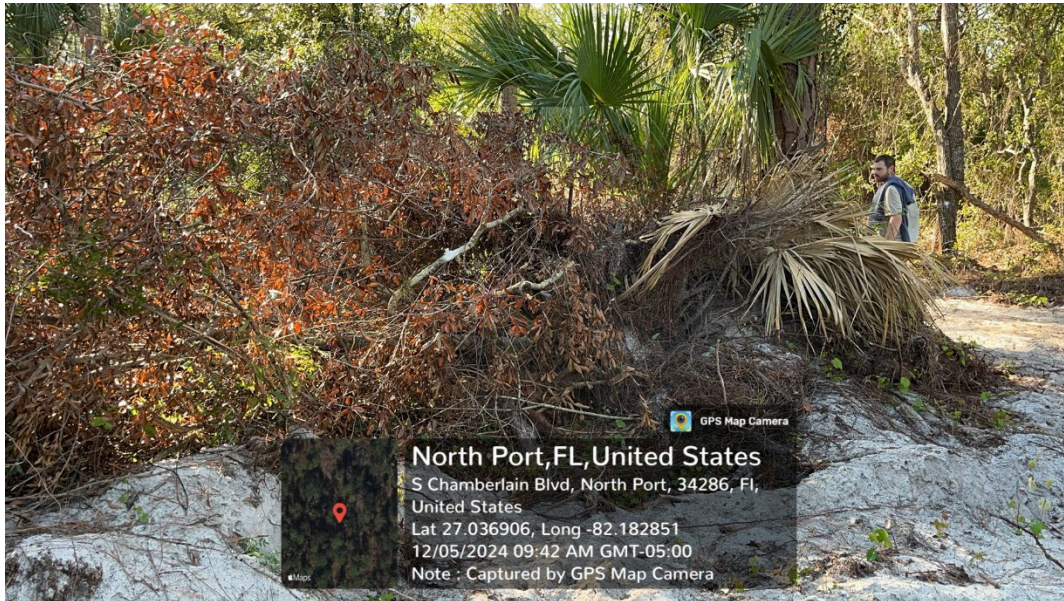








NorthPort
FLORIDA
Natural Resources Division









Natural Resources Division





