

River Road Regional Interstate Connector

Sarasota County and City of North Port
Joint Meeting

June 6, 2017

City Commission Chambers
4970 City Hall Boulevard
North Port, Florida

Background:

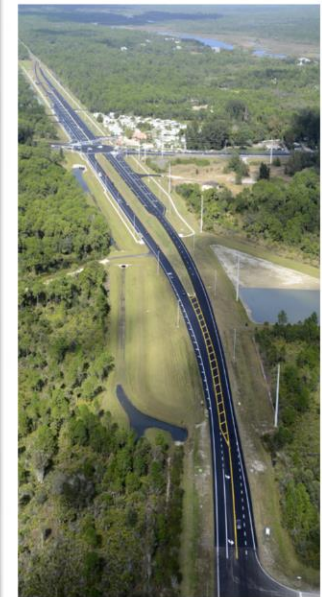
Regional Roadway Improvement and Reconstruction Project

- Major Arterial Roadway from S.R. 776 (Charlotte County) to I-75 (Sarasota County)
- 12.7-mile long widening and elevation improvement
- Add capacity, correct deficiencies, hurricane evacuation
- Add bicycle lanes, sidewalks, streetscape, street lighting
- **Multiple partners and stakeholders**

Design complete from U.S. 41 to I-75: 6-lane and 4-lane sections consistent with PD&E and projected traffic analysis

Investments to Date: \$52.6 million

- Winchester Blvd. Charlotte County Line to River Road (2002): **\$10 million**
- ROW Acquisition North and South of U.S. 41 (2006 – present): **\$21.9 million value**
- West Villages Pkwy Signalized Intersection (2010): **\$5.9 million**
- U.S. 41 to I-75 Permitted Construction Plans (2013): **\$4.5 million**
- U.S. 41 Ultimate Intersection completion (2014): **\$9.4 million**
- Stormwater Development Agreement WVID (2016): **\$900,000 committed value**



River Road Regional Interstate Connector: Hurricane Evacuation Route - Major Arterial

Overall Route:

- **River Road:**
- **Winchester Blvd.:**

I-75 to Charlotte County Line (12.7-miles)

I-75 south through U.S. 41 to Winchester Blvd.
River Road to Charlotte County Line

Roadway Segments:

River Road:

	Length	Improvements	Design	Cost Estimate	
• I-75 to Center Road	2.3	4-lanes+Bike/Ped	√	\$20M	(+\$3M ROW)
• Center to W. Villages Pkwy	1.6	4-lanes+Bike/Ped	√	\$15.5M	(+\$2.5M ROW)
• W. Villages Pkwy to U.S. 41*	1.7	4-lanes+Bike/Ped	√	\$21.5M	
• U.S. 41 to Winchester Blvd.	4.0	4-lanes+Bike/Ped		\$30M	(planning est.)

Winchester Blvd. (exist. 2-lanes):

• River Rd. to CC Line	3.1	Add 2-lanes		\$14M	(planning est.)
------------------------	-----	-------------	--	-------	-----------------

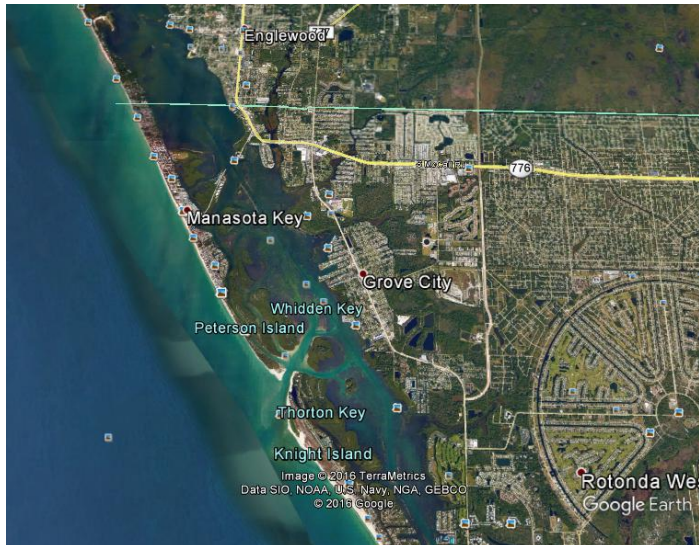
* Segment under negotiation with West Villages Improvement District (WVID) for construction under a potential impact fee credit arrangement. Segment improvements by WVID would extend approx. 2,000-feet north beyond West Villages Pkwy.

Charlotte County Improvement - South of Charlotte County Line:

Cape Haze Peninsula area

- Winchester Blvd. – S.R. 776 south to Placida Rd.
 - 4-lane roadway widening
 - Complete: July 28, 2015

2016 Population: ~43,000






WESTVILLAGES



As amended by Isaac Brownman

Marty Black, General Manager

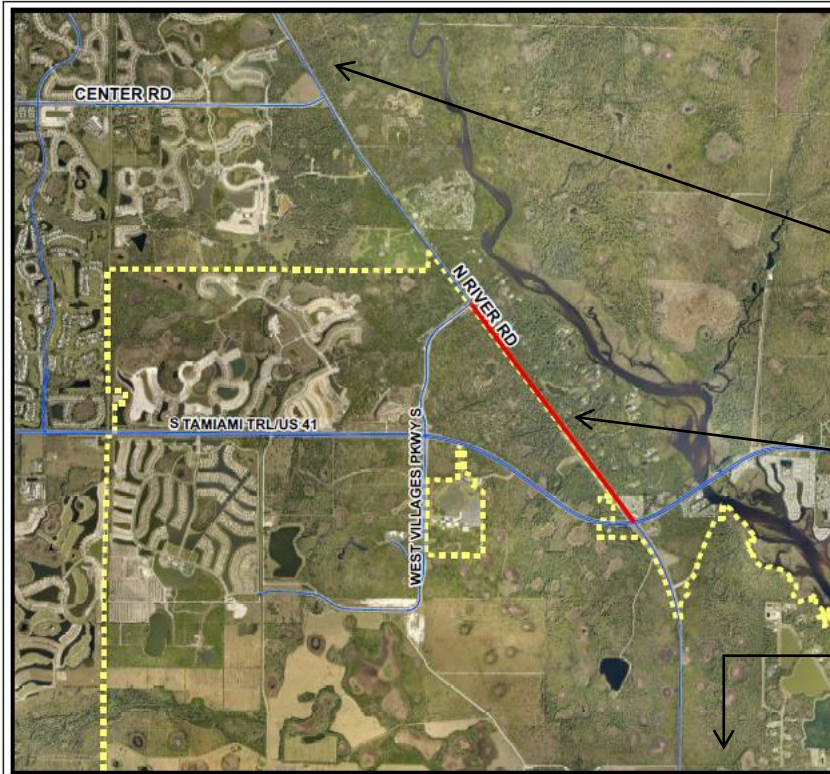
Residential Market Update

- West Villages ranks as the second largest master planned community in Florida by total number of build-out units



Rank	Community	Total Units Planned
1	The Villages	50,461
2	West Villages*	33,679
	* Future West Villages	25,617
	* Island Walk	2,488
	* Grand Palm	1,999
	* Gran Paradiso	1,990
	* Sarasota National	1,585
3	Lakewood Ranch	20,839
4	Babcock Ranch(Future)	15,089
5	Nocatee	12,193
6	Lake Nona	11,000
7	Ave Maria	10,959
8	Solivita	10,365
9	Oakleaf	9,954
10	Celebration	7,874
11	Fishhawk Ranch	6,605

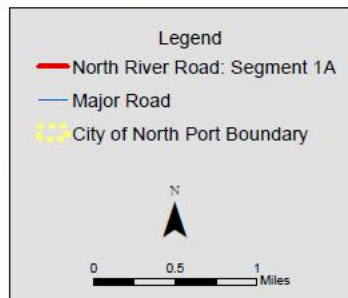
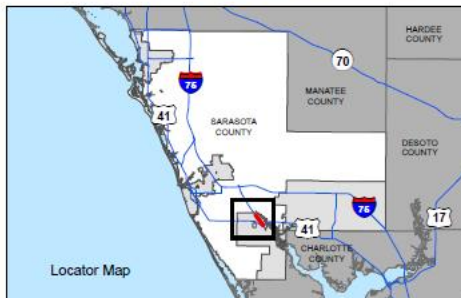
River Road Regional Interstate Connector



North to I-75

Partnership Segment:
North of U.S. 41 through West Villages Parkway

South to Winchester Blvd.,
Charlotte County and Englewood



Funding Strategies Moving Forward:

MPO Major Project Priorities List

- Financially Feasible Plan
- 2025, 2030, 2040 majority funding from Federal/State

Advocacy/Outreach Coordination Efforts

- 2017 State Legislative Appropriation \$3.0 million

Continue to pursue potential partnership opportunities

- West Villages Improvement District (WVID)

Continue to pursue/engage in ROW acquisition

- CIP 95713: Advance ROW Acquisition Program FY 17-21

Next and Future Phases:

North River Road

- Additional ROW acquisition north of West Villages Parkway
- Design plan “refresh”
- Construction: U.S. 41 to I-75

Winchester Boulevard

- Add 2-lanes for a 4-lane section

South River Road

- Design and construction, Winchester Blvd. to U.S. 41

Safety Resurfacing completed early this year: U.S. 41 to I-75

Questions