

TRANSFORM»» 2045

Long Range Transportation Plan

Comprehensive Plan Review

April 2019



2045 LRTP TransForum Meeting Summary

Monday, April 22, 2019 at 9:00 am

University of South Florida Sarasota/Manatee Campus



Word Cloud of Priorities for Next 20 Years from Workshop Participants

INTRODUCTION

As part of the Long Range Transportation Plan (L RTP) update to 2045, the Sarasota/Manatee Metropolitan Planning Organization (MPO) hosted a public meeting focused on local comprehensive planning and its role in long range planning. The goal of this meeting was to identify themes in the local comprehensive plans for planning consistency with the L RTP. This document summarizes key findings from the meeting and input received from the public.

KEY FINDINGS

The comprehensive plans were reviewed in three categories:

- Mainland Cities: North Port, Sarasota, Bradenton, Venice, and Palmetto
- Island Cities: Longboat Key, Holmes Beach, Bradenton Beach, and Anna Maria Island
- Counties: Sarasota and Manatee

There are many common themes throughout the plans and some issues that are not necessarily consistent across jurisdictions. Identifying these commonalities and mismatches is the main goal of the comprehensive plan review. Identifying solutions to the region's transportation challenges is not a one-size-fits-all approach and it is important to recognize and reflect the different priorities in different areas.

Mainland Cities

The following are common themes in the Mainland Cities comprehensive plans:

- Transportation to support desired land use pattern
- Emphasis on complete streets and multi modal options

- Coastal protection and encouragement of development in upland areas
- Affordable housing
- Attracting new business and economic development
- Need to better understand and address parking and its effect on land use and transportation
- Level of Service (LOS) standard D or E in most places

Additionally, the Cities of Bradenton and Sarasota reference provision of quality rental units and maintaining the grid network, respectively. The City of North Port specifically addresses urban sprawl through protection of green space around their urban areas. There is also mention of mobility for aging populations in Venice and farm work housing in Palmetto. Both of these challenges speak to a need for transportation options and a need for affordable housing with good accessibility to essential services.

The mainland cities also address the concepts of smart growth with a call for transportation demand management strategies (TDM) and electric vehicles. A focus on establishing mobility plans to assess development and its impact on multi modal transportation is also a common theme in the mainland cities plans.

Island Cities

The following are common themes in the Island Cities comprehensive plans:

- Land development regulations that recognize vulnerability to tropical storms, topography, and soil conditions
- Planning for hurricane evacuation
- Limitation of public expenditures in coastal high hazard areas
- Bicycle and pedestrian connections from residential areas to the mainland, recreation, school, shopping, and transit
- Peak season transit connections between mainland and island cities
- Promotion of increased transit
- LOS standard D in most places
- Protection and preservation of natural resources

The City of Holmes Beach plan has the strongest wording on provision of affordable housing. The City of Bradenton Beach discourages strip commercial development and Anna Maria Island will not support or finance new local transportation corridors in coastal high hazard areas. A common challenge in the island communities, and specifically called out in Longboat Key, is providing infrastructure to support the peak season population. This must be balanced with the constrained environment on the islands and the desire to minimize new development in coastal high hazard areas.

Counties

The following are common themes in the counties' comprehensive plans:

- Multi modal mobility and connectivity
- Reduction of traffic congestion through transit
- Encouragement of infill and redevelopment
- Economic development
- Protection of existing rural character, and agriculture economy
- Affordable housing near employment
- Direct development away from areas subject to flooding
- LOS standard D in most places

Additionally, Manatee County's comprehensive plan includes continued support for Port Manatee operations. Sarasota County has a greater emphasis on aging in place, after releasing the Age-Friendly Sarasota County Action Plan in 2017.

Link to LRTP

The comprehensive plan themes will be used to inform the MPO's LRTP scenario planning process. The themes found throughout the plans may influence the following:

- **Accessibility** – Access to affordable housing options near employment and transit service connecting affordable housing with employment
- **Reliability** – Technology strategies for incident management
- **Congestion** – Implementing congestion management strategies and encouraging non-auto modes to reduce vehicle miles traveled
- **Resiliency** – Mitigation and adaptation strategies including limiting new development in coastal high hazard areas

PUBLIC INPUT

Meeting attendees were asked to prioritize the following transportation investment areas:

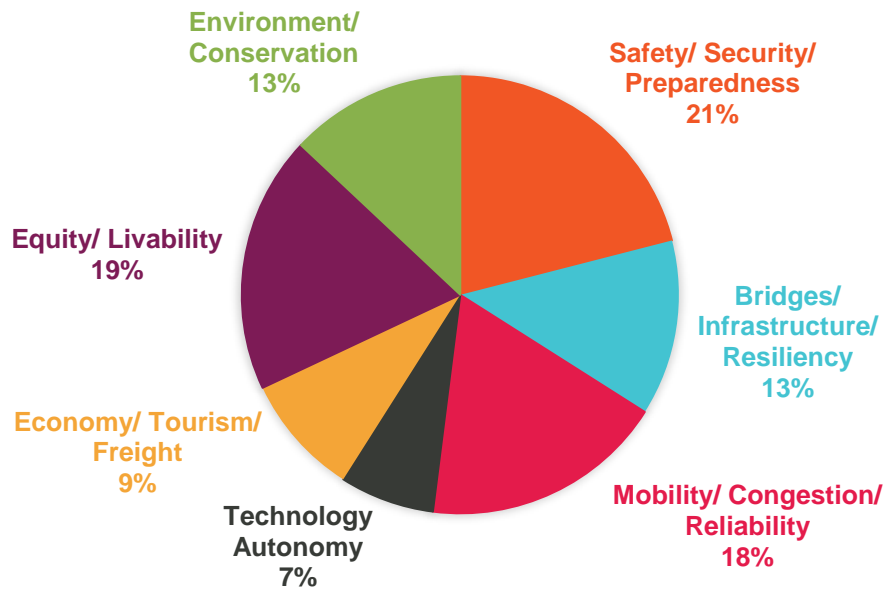
- Safety/Security/Preparedness
- Bridges/Infrastructure/Resiliency
- Mobility/Congestion/Reliability
- Technology/Autonomy
- Economy/Tourism/Freight
- Equity/Livability
- Environment/Conservation

Participants were given \$100 “MPO bucks” and could invest their money in any of the seven areas, in increments of \$10. The results are summarized in Table 1 and Figure 1. The top investment priorities among meeting attendees were: (1) Safety/Security/Preparedness, (2) Equity/Livability, and (3) Mobility/Congestion/Reliability.

Table 1: Transportation Investment Activity

Investment Area	Total Investment	Additional Comments
Safety/Security/Preparedness	\$1,190	Address High Crash Locations
Equity/Livability	\$1,080	Improve Access to Affordable Housing (x2)
Mobility/Congestion/Reliability	\$1,040	Increase Transit Options Reduce Auto Dependency Bikeways (x3)
Bridges/Infrastructure/Resiliency	\$750	Reduce Roadway Flooding Integrate Sustainable Development Maintain Current Infrastructure
Environment/Conservation	\$730	Promote Energy Conservation (x2) Minimize Environmental Impact Improve Air Quality
Economy/Tourism/Freight	\$490	Improve Routes to Tourist Destinations
Technology Autonomy	\$420	Accommodate Autonomous Vehicles Improve Efficiency Using Technology Maximize Tech Advances

Figure 1: Investment Area Priorities



Participants filled out a survey where they were asked what they believe are the top three issues Manatee and Sarasota Counties will need to address in the next 20 years. Common responses include:

- Providing access to affordable housing
- Improving multimodal connectivity
- Supporting the economy and job growth
- Increasing safety
- Increasing equity
- Improving walkability
- Protecting the environment
- Preparing for sea level rise/climate change
- Reducing congestion
- Preparing for evacuations and other emergencies



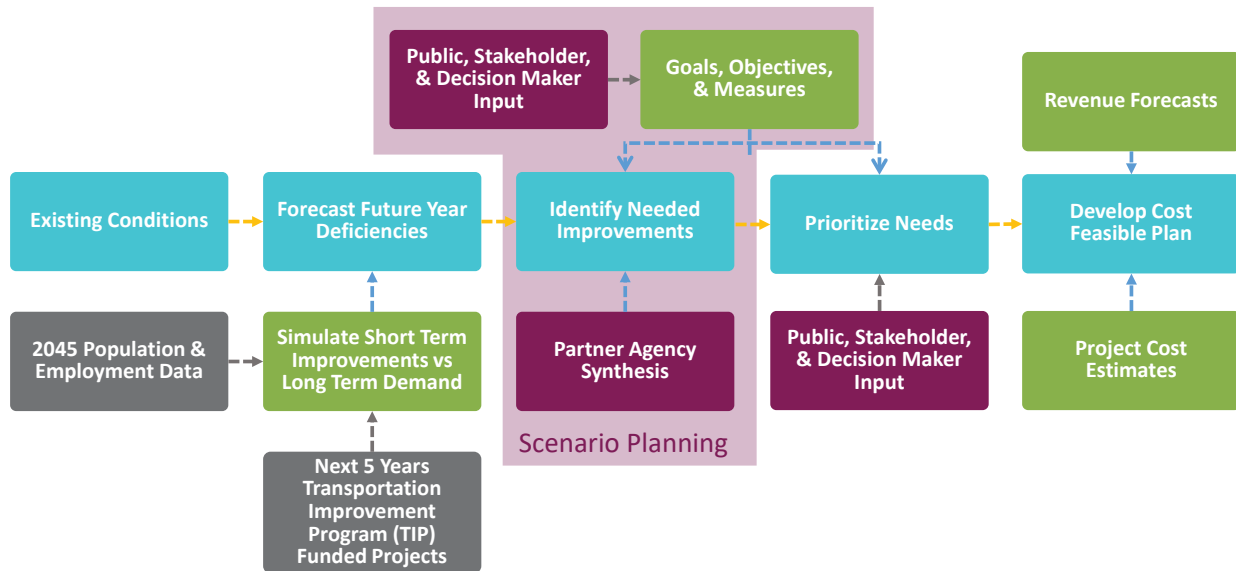
Long Range Transportation Plan Overview

Long Range Transportation Plan

WHAT IT IS AND WHY WE DO IT

- *Multimodal plan with a horizon year at least 20 years in the future*
- *Includes financial analysis demonstrating cost affordability*
- *Federal requirement for all metropolitan areas >50,000 population*
- *Must be updated every 5 years*
- *Federal funds limited to projects included in LRTP cost feasible plan*

L RTP Update Process



TRANSFORM
TOMORROW

Collaborative Approach

PARTNER AGENCY PLANS/INPUT COORDINATION

Key Milestones

1. *Goals, Objectives, & Measures (GOMs)*
2. *Plan Synthesis, Scenario Planning*
3. *Corridor Strategic Plans*
4. *Project Prioritization, Cost Feasible Plan*

Key Input from Partners

1. *GOMs, weighting of goals/measures*
2. *Review of Scenario Frameworks, Performance*
3. *Review of corridor investment strategies*
4. *Review of project scoring, draft Cost Feasible Plan*

TRANSFORM
TOMORROW

New FDOT Planning Emphasis Areas

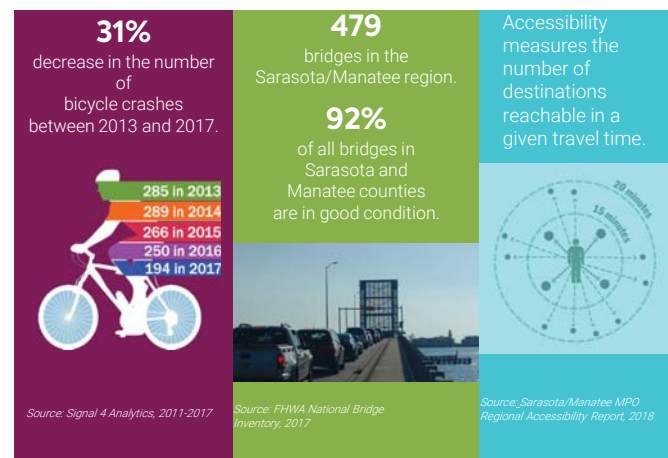
- **Rural Transportation Planning**
 - Coordinate with rural governments within and adjacent to Sarasota Manatee region
- **ACES (Automated/Connected/Electric/Shared-use Vehicles)**
 - Consider impacts of disruptive changes in transportation brought about by emerging technologies
- **Transportation Performance Measures**
 - Implement performance based planning process: establish baselines, adopt targets, and monitor progress

TRANSFORM
TOMORROW

Performance Based Planning

FEDERAL REQUIREMENT

- **Quantitative project evaluation and prioritization**
 - Identify evaluation criteria related to plan Goals
 - Compile data/tools to evaluate improvements
 - Prioritize projects for inclusion in Cost Feasible Plan
- **System Monitoring**
 - Identify measures by topic (e.g. infrastructure condition, system performance, safety)
 - Set targets for system performance evaluation
 - Monitor over time



TRANSFORM
TOMORROW



Mainland Cities

- North Port
- Sarasota
- Bradenton
- Venice
- Palmetto

Local Comprehensive Plans

Common themes

- Transportation to support desired land use pattern
- Level of Service (LOS) standard D or E in most places
- Coastal protection and encourage development in upland areas
- Emphasis on complete streets and multimodal options
- Need to better understand and address parking and its affect on land use and transportation
- Affordable housing

Local Comprehensive Plans

Other themes

- Provision of quality rental units (City of Bradenton)
- Maintaining the grid network (City of Sarasota)
- Protect Village Greenbelt (City of North Port)
- Mobility for aging population (City of Venice)
- Safe/sanitary farm worker housing (City of Palmetto)

TRANSFORM
TOMORROW

Smart Growth Themes

Technological innovations and trends including:

- Transportation Demand Management (e.g., ride sharing, flexible work hours)
- Alternative energy source vehicles

Establish mobility plans to assess development and it's impact on multimodal transportation

Sarasota/Manatee Intelligent Traffic System (ITS) Devices



475
Signals



102
Bluetooth readers



236
Closed-circuit
television (CCTV) camera



4
Arterial dynamic
message signs
(ADMS)



60
Microwave vehicle
detection systems
(MVDS)

TRANSFORM
TOMORROW

Link to LRTP Process

Land use

- Resiliency mitigation and adaptation strategies

Reliability

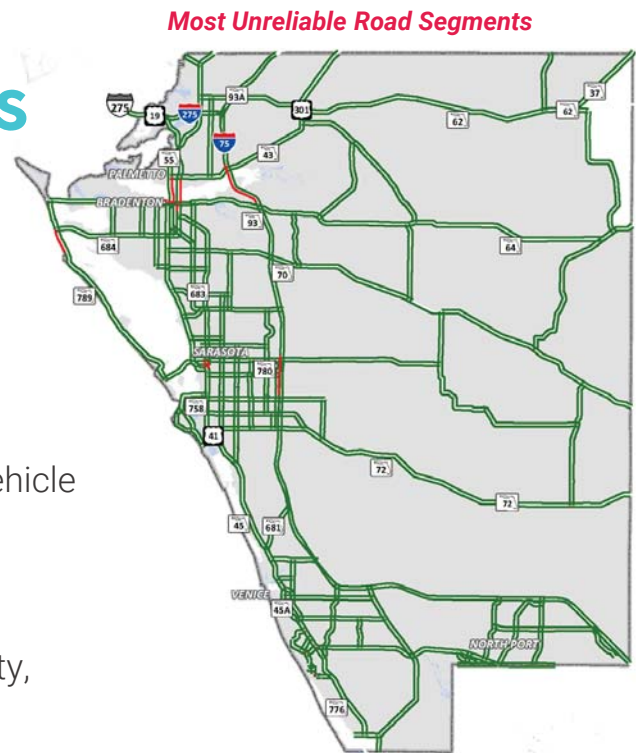
- Incident management

Congestion

- Encourage non-auto modes to reduce vehicle miles traveled
- Implement Congestion Management strategies

Rural Planning

- Consider needs of agricultural community, including workforce housing, impact on transportation



MPO Plans

Congestion Management Process

- Performance-based project prioritization process focused on congestion relief

Active Traffic Management System

- reduce congestion in real time with smart technology (e.g. speed sensors, traffic cameras)



Island Cities

- Longboat Key
- Holmes Beach
- Anna Maria Island
- Bradenton Beach

Local Comprehensive Plans

Common themes

- Land development regulations that recognize vulnerability to tropical storms, topography, and soil conditions
- Planning for hurricane evacuation
- Limit public expenditures in coastal high hazard areas
- Bicycle and pedestrian connections from residential areas to mainland, recreation, school, shopping, and transit
- Promote increased transit
- LOS standard D in most places

Local Comprehensive Plans

Other themes

- City shall not support or finance new local transportation corridors in Coastal High Hazard Areas (Anna Maria Island)
- Discourages strip commercial development (Bradenton Beach)
- Affordable housing (Holmes Beach)

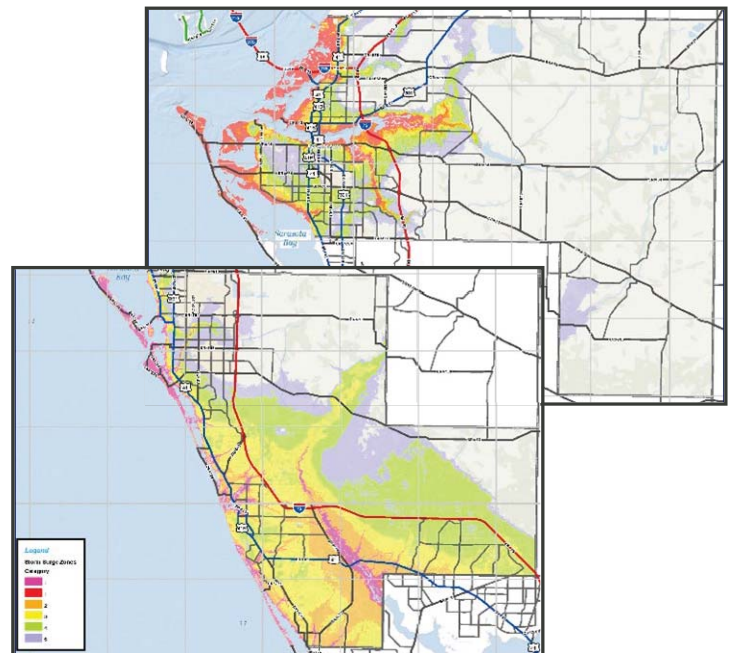


TRANSFORM
TOMORROW

Resiliency Themes

- *Minimize vegetation loss during construction*
- *Avoid increasing densities within coastal high hazard areas*
- *Minimize development in high risk areas*

Storm Surge Zones



TRANSFORM
TOMORROW

Link to LRTP Process

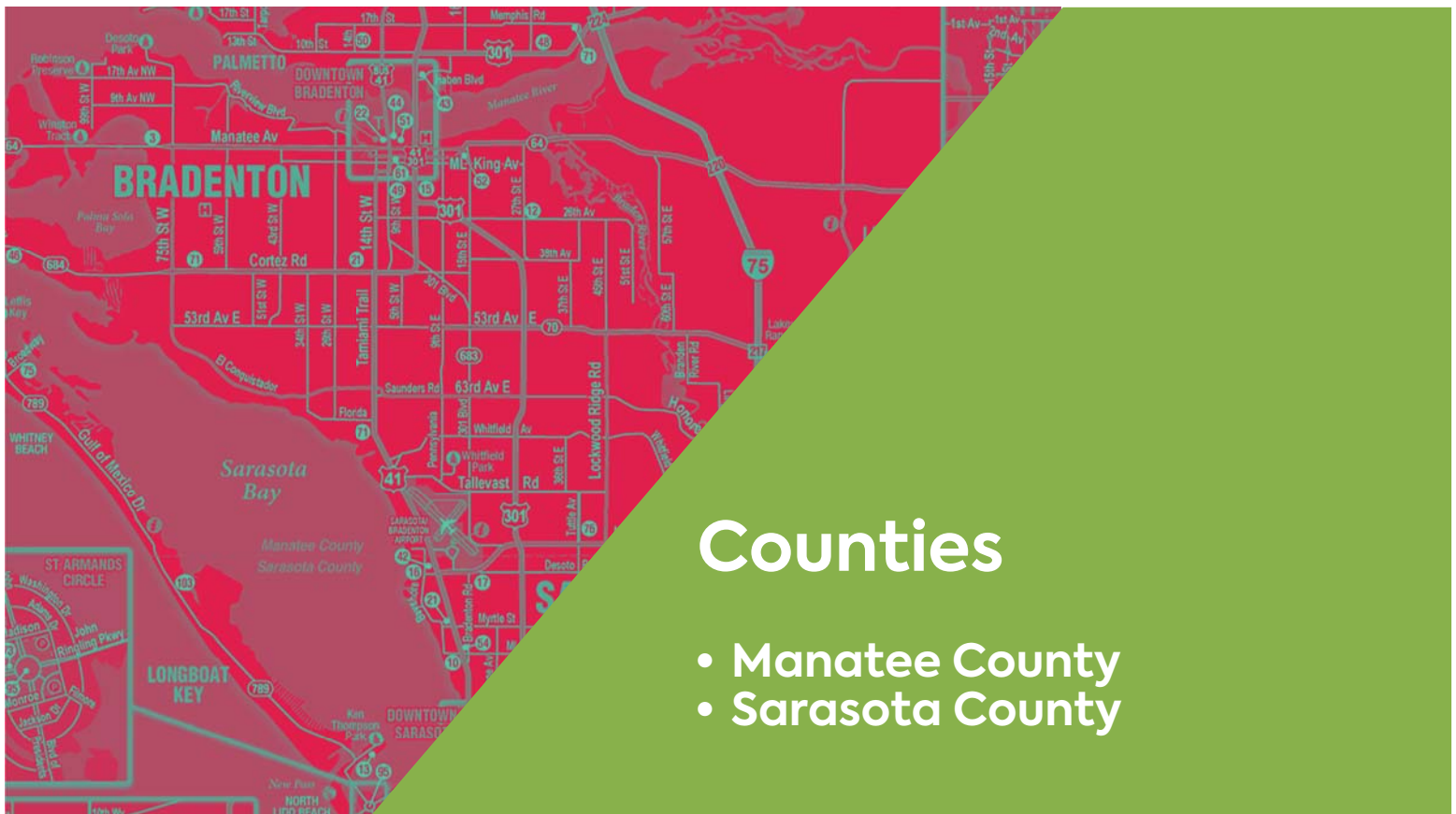
Resiliency mitigation and adaptation strategies

- Limit new development/increased density with Coastal High Hazard Areas
- Encourage multimodal transportation system
 - Environmentally constrained nature limits opportunity for roadway widening

Access to Affordable Housing

- Affordable housing options near employment
- Transit service connecting mainland housing with island employment

**TRANSFORM
TOMORROW**



Local Comprehensive Plans

Common themes

- Multimodal mobility and connectivity
- Reduce traffic congestion through transit
- Encourage infill and redevelopment
- Protect existing rural character, agriculture economy
- Affordable housing, near employment
- Direct development away from areas subject to flooding
- LOS standard D in most places

TRANSFORM
TOMORROW

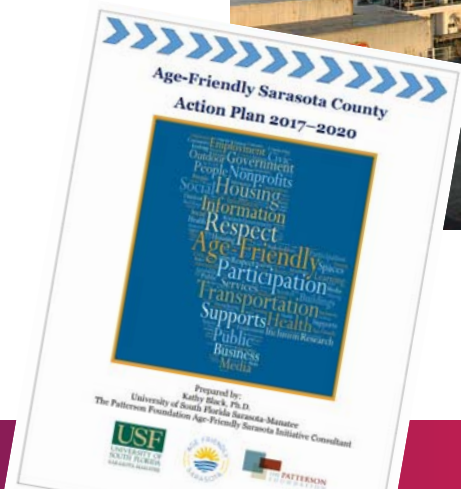
Local Comprehensive Plans

Other themes

- Continued viability of the Port (Manatee County)
- Emphasis on health/livability and “aging in place” (Sarasota County)



Source: Port Manatee



TRANSFORM
TOMORROW

Equity Themes

Access to Jobs

- Incentivize transit oriented and mixed use development
- Encourage urban infill and redevelopment
- Encourage non-automobile options

Access to Affordable Housing

- Diversity of housing types and affordability levels
- Affordable housing, near employment



Accessibility measures the number of destinations reachable in a given travel time.

Source: Sarasota/Manatee MPO Regional Accessibility Report, 2018

**TRANSFORM
TOMORROW**

Link to LRTP Process

Performance-Based Planning

- Emphasis on use of safety data in decision making
- Use of performance standards in transit planning

Accessibility

- Land use scenarios focused on infill downtown

Connectivity

- Transportation scenarios that improve connections for all modes

**TRANSFORM
TOMORROW**

MPO Plans

Multimodal Accessibility Analysis

- Walk, Bike, Transit access to opportunities

Active Transportation Plan

- Walk, Bike, Transit connectivity

