



PRICE BOULEVARD WIDENING PROJECT

**Sumter Boulevard to Toledo
Blade Boulevard Status Update**

May 14, 2019

Plans Development

- 90% Plans received and reviewed.
- May 2, 2019, reviewed comments with Engineer-of-Record.

Stormwater Treatment System

- Existing linear dry retention ponds along Sumter Boulevard and Toledo Blade Boulevard include underdrain systems that are increasing in effort and cost of maintenance required.
- Changing from dry to wet retention ponds is recommended by the Operations and Maintenance Division.
- The change from dry to wet would not change the pond sites needed for the project.

Stormwater Treatment System

- The additional effort required by the Engineer-of-Record for this change would be approximately \$19,000 and require approximately four weeks of time.
- The ponds would need to be aerated by either a fountain or bubblers system.
- The additional time needed, including review and approval by permitting agencies is estimated to be five months.

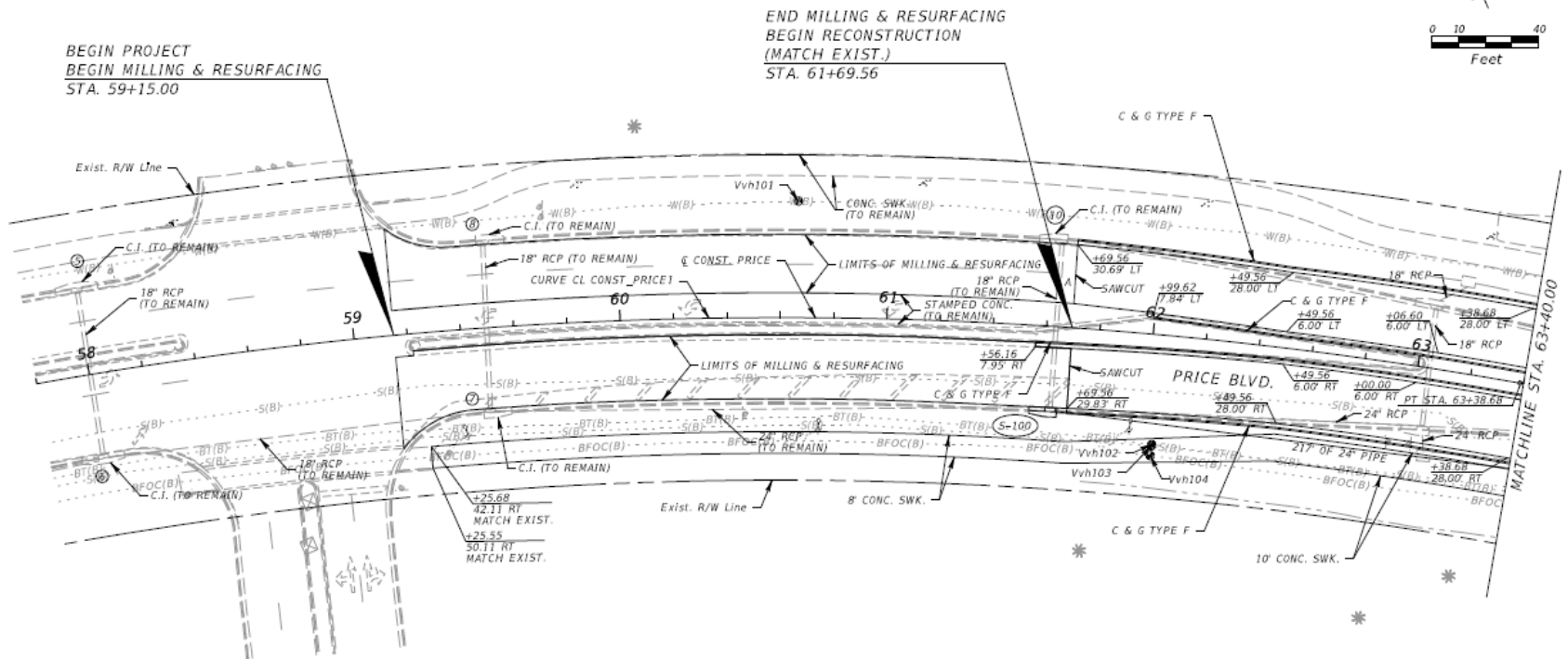
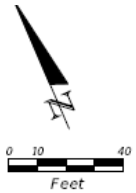
Raised Center Medians

- At the west end of the project, the raised center median would extend to the Blueridge Waterway crossing.
- Restricts left turn movements into and out of Convergence Way (Walmart Neighborhood Store).

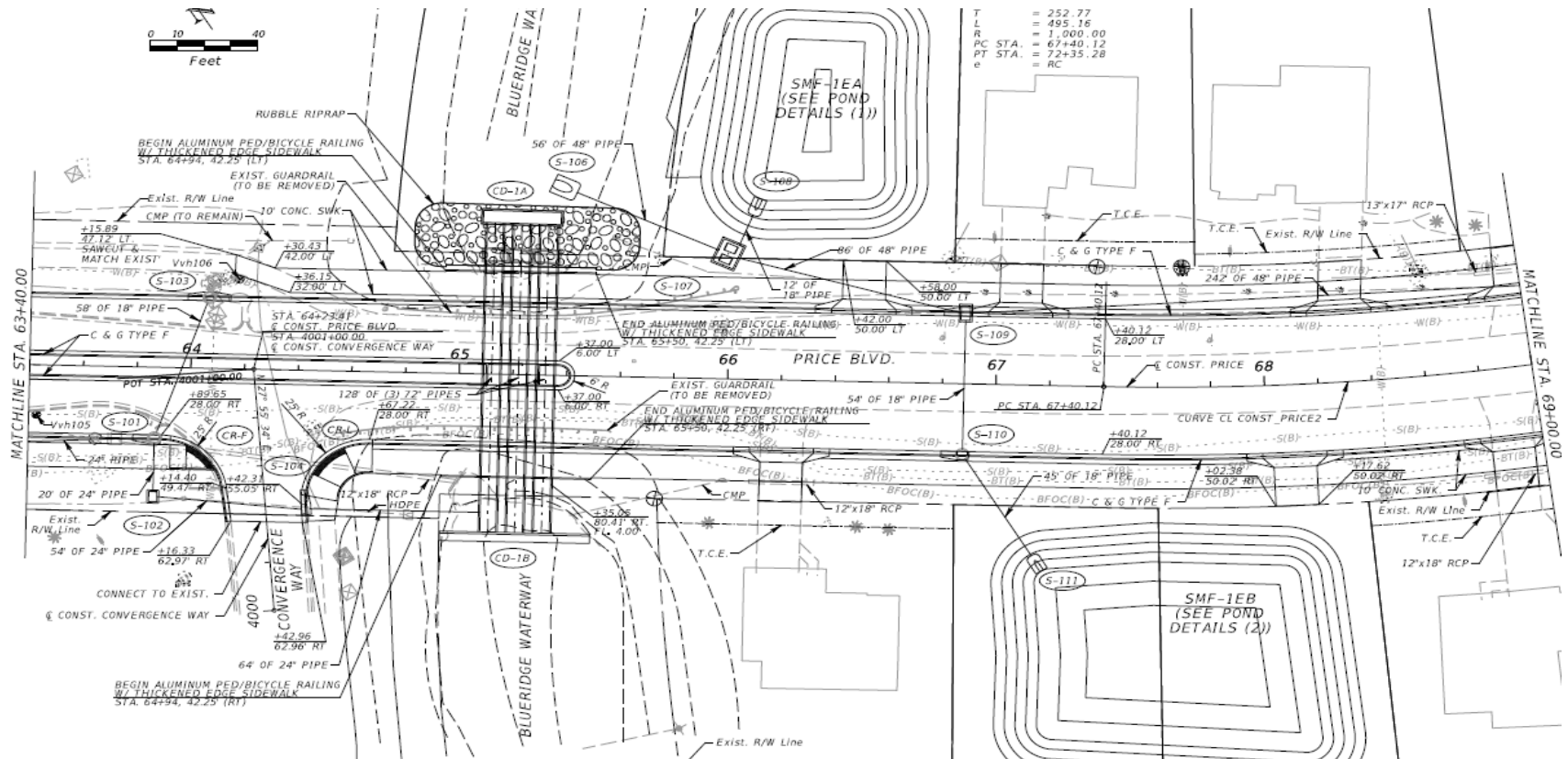
Raised Center Medians

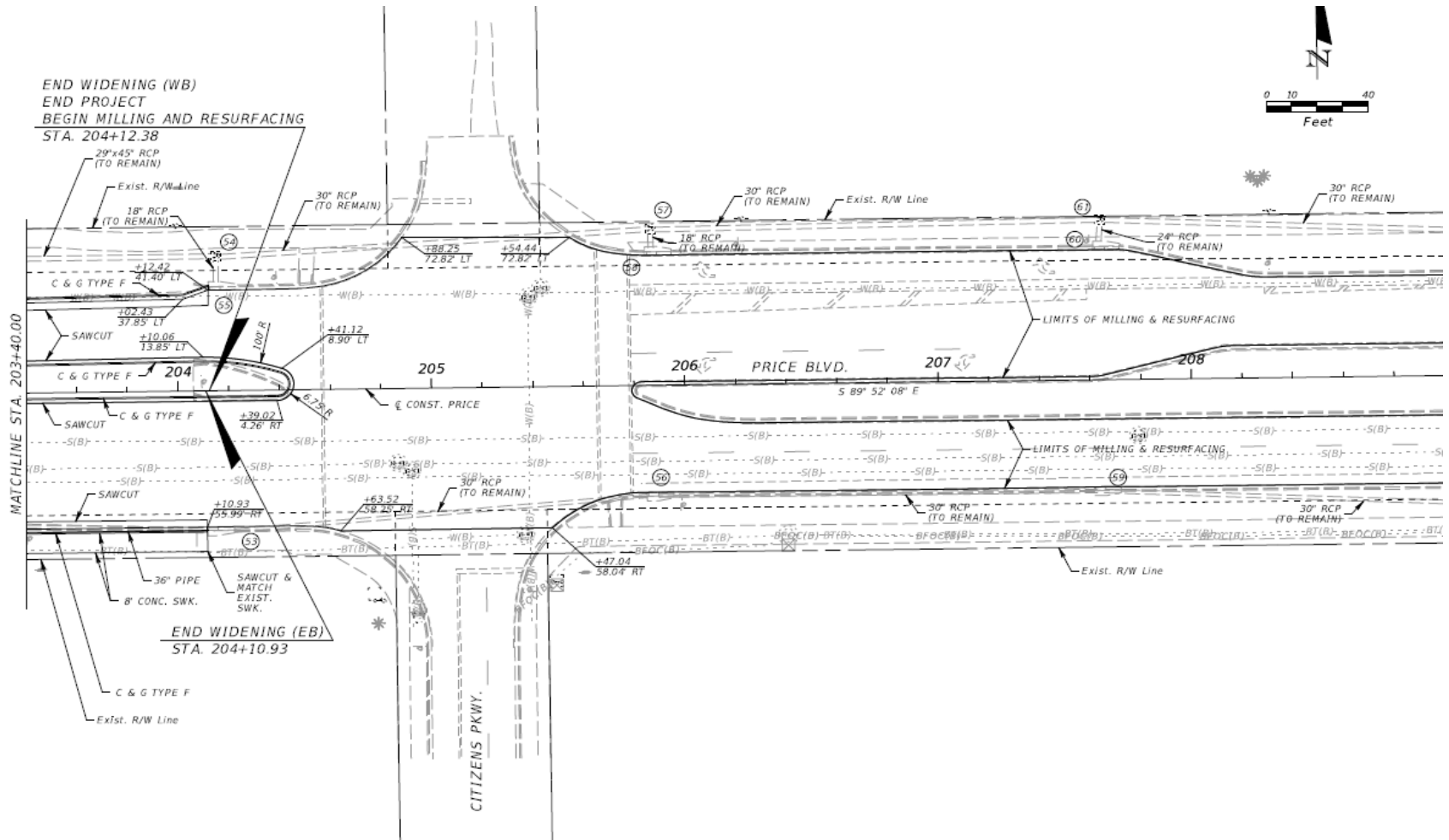
- A mid-block crossing would be added in this location incorporating Rapid Flashing Beacons and high emphasis crosswalk striping.
- At the east end of the project, the raised center median would extend from Citizens Parkway to the Creighton Waterway.

West End Median

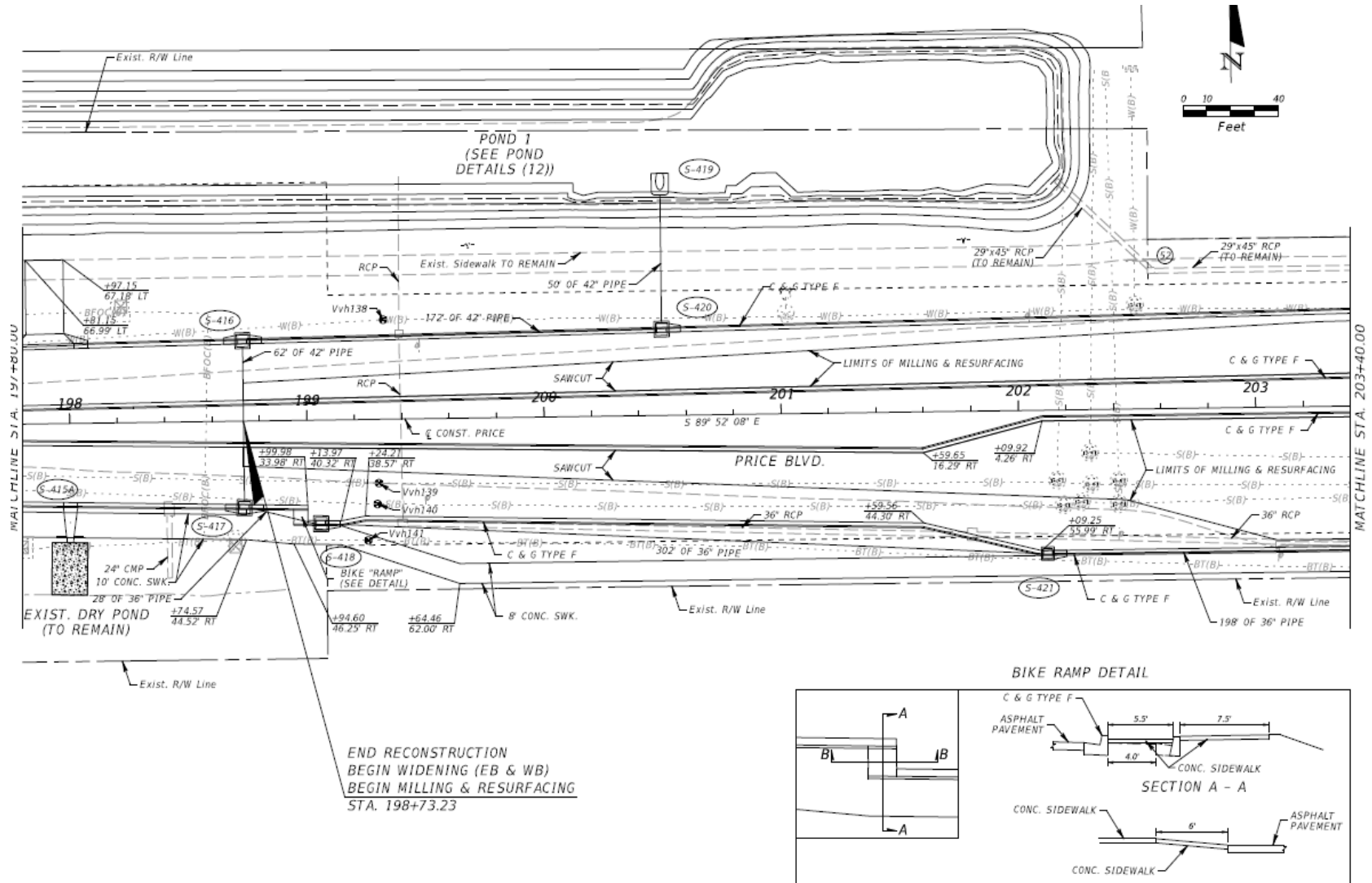


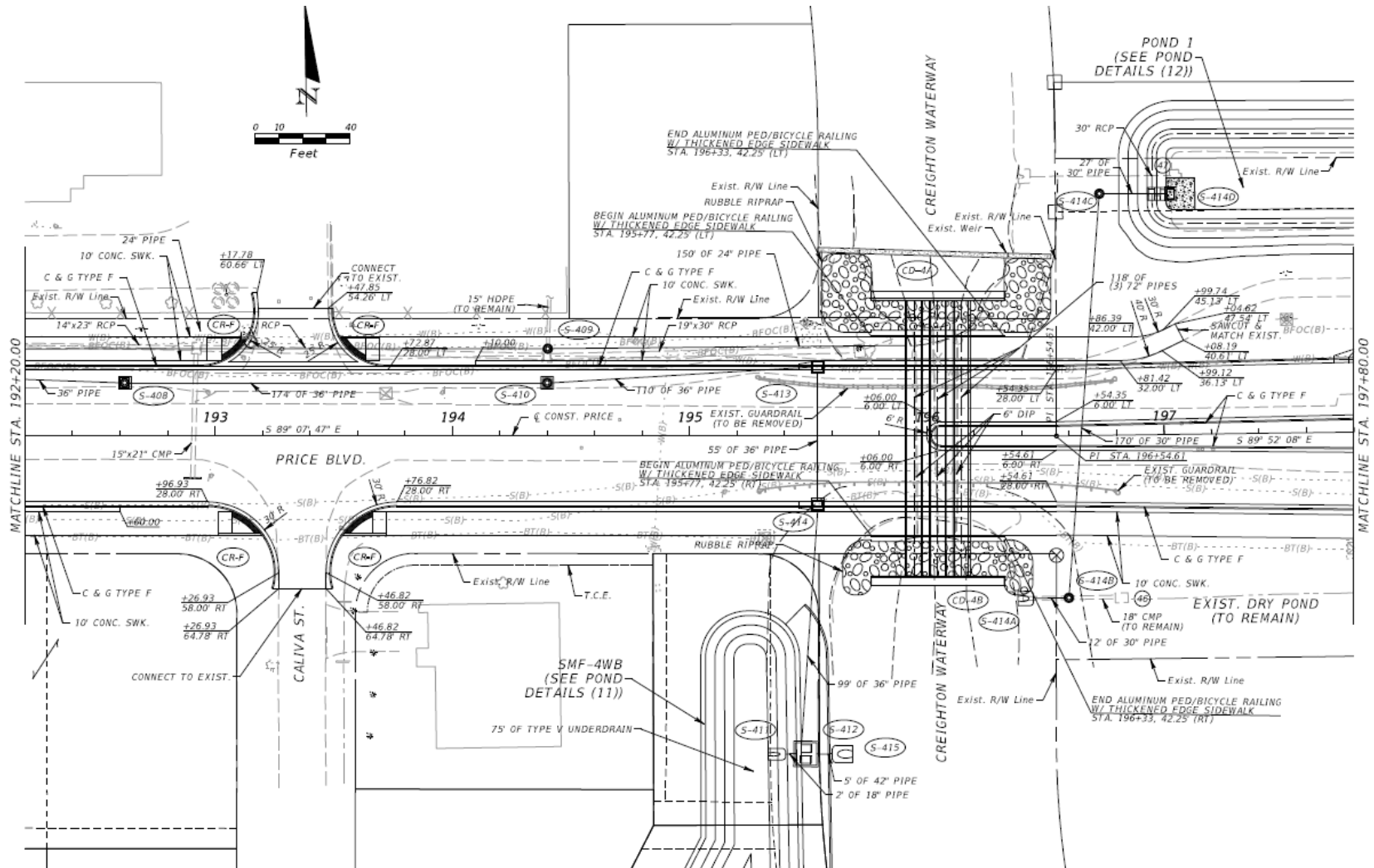
West End Median





East End Median





Landscaping

- The raised center medians at each end of the project will be landscaped.
- The stormwater treatment pond sites will be lined with trees and/or shrubs.

Proposed Center Turn Lane Islands

- Positioning of the islands was reviewed at the May 2, 2019, meeting with the Engineer-of-Record.
- Due to single family lots along both sides of the roadway, no locations were found that would not affect left turn movements into or out of a number of lots on both sides of the proposed island.
- The use of stamped concrete would provide a visual distinction from the travel lanes. During the 2017 public meetings there was strong opposition from residents due to noise produced by stamped concrete.

Proposed Mid Block Crossing Schemes

