

NOT FOR CONSTRUCTION

SCALE: 1/8" = 1'

0 4 8 16

# Swings Area Garden of the Five Senses Playground North Port, FL

REP SERVICES, INC. *RSI*  
Experts at Play & Outdoor Spaces Structures

DRAWING: 107370-12

RSI PROJ: 12806

- POST/ARCH LENGTHS**
- A 249" Steel Post For CoolToppers
  - B 221" Steel Post For CoolToppers
  - C 124" Alum Post DB
  - D 116" Alum Post DB
  - E 110" Alum Post For Roof DB
  - F 100" Alum Post DB
  - G 92" Alum Post DB
  - H 84" Alum Post DB
  - I 76" Alum Post DB
- POST/ARCH LENGTHS**
- A 285" Steel Post For CoolToppers
  - B 233" Steel Post For CoolToppers
  - C 148" Alum Post DB
  - D 142" Alum Post For Roof DB
  - E 140" Alum Post DB
  - F 132" Alum Post DB
  - G 124" Alum Post DB
  - H 118" Alum Post For Roof DB
  - I 115" Alum Post DB
  - J 108" Alum Post DB
  - K 100" Alum Post DB
  - L 92" Alum Post DB
  - M 76" Alum Post DB

**GENERAL NOTES:**

- EQUIPMENT LOCATION TO BE FIELD VERIFIED PRIOR TO CONSTRUCTION
- ACCESSIBLE ROUTE OF TRAVEL TO THE PLAYGROUND TO BE PROVIDED BY OTHERS
- BASE MUST EXHIBIT POSITIVE DRAINAGE IN ALL AREAS

**WELCOME SIGN**

TO BE LOCATED IN CONSULTATION WITH OWNER

**TOTAL PLAY COMPONENTS:** 2-5 AGE AREA - 18  
5-12 AGE AREA - 35

2-5 AGE AREA		5-12 AGE AREA	
TOTAL ELEVATED PLAY COMPONENTS	13	TOTAL ELEVATED PLAY COMPONENTS	10
TOTAL ELEVATED COMPONENTS ACCESSIBLE BY RAMP	13	TOTAL ELEVATED COMPONENTS ACCESSIBLE BY RAMP	10
TOTAL ELEVATED COMPONENTS ACCESSIBLE BY TRANSFER	13	TOTAL ELEVATED COMPONENTS ACCESSIBLE BY TRANSFER	10
TOTAL ACCESSIBLE GROUND LEVEL COMPONENTS SHOWN	5	TOTAL ACCESSIBLE GROUND LEVEL COMPONENTS SHOWN	5
TOTAL DIFFERENT TYPES OF GROUND LEVEL COMPONENTS	4	TOTAL DIFFERENT TYPES OF GROUND LEVEL COMPONENTS	4
TOTAL ELEVATED PLAY COMPONENTS	16	TOTAL ELEVATED PLAY COMPONENTS	12
TOTAL ELEVATED COMPONENTS ACCESSIBLE BY RAMP	16	TOTAL ELEVATED COMPONENTS ACCESSIBLE BY RAMP	12
TOTAL ELEVATED COMPONENTS ACCESSIBLE BY TRANSFER	16	TOTAL ELEVATED COMPONENTS ACCESSIBLE BY TRANSFER	12
TOTAL ACCESSIBLE GROUND LEVEL COMPONENTS SHOWN	10	TOTAL ACCESSIBLE GROUND LEVEL COMPONENTS SHOWN	10
TOTAL DIFFERENT TYPES OF GROUND LEVEL COMPONENTS	10	TOTAL DIFFERENT TYPES OF GROUND LEVEL COMPONENTS	10

**NUMBER AND TYPES OF GROUND LEVEL PLAY COMPONENTS REQUIRED**

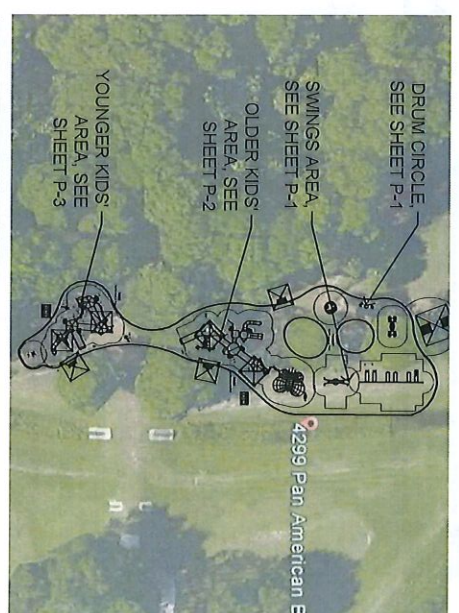
Playground equipment meets the requirements of IFBC Accessibility Code, Table 240.2.1.2

**SURFACING**

8645 SF POURED-IN-PLACE  
9" FALL HEIGHT  
710 LF CONCRETE CURB

**SHEET NO. P-1**  
PAPER SIZE B

## SITE LOCATION MAP

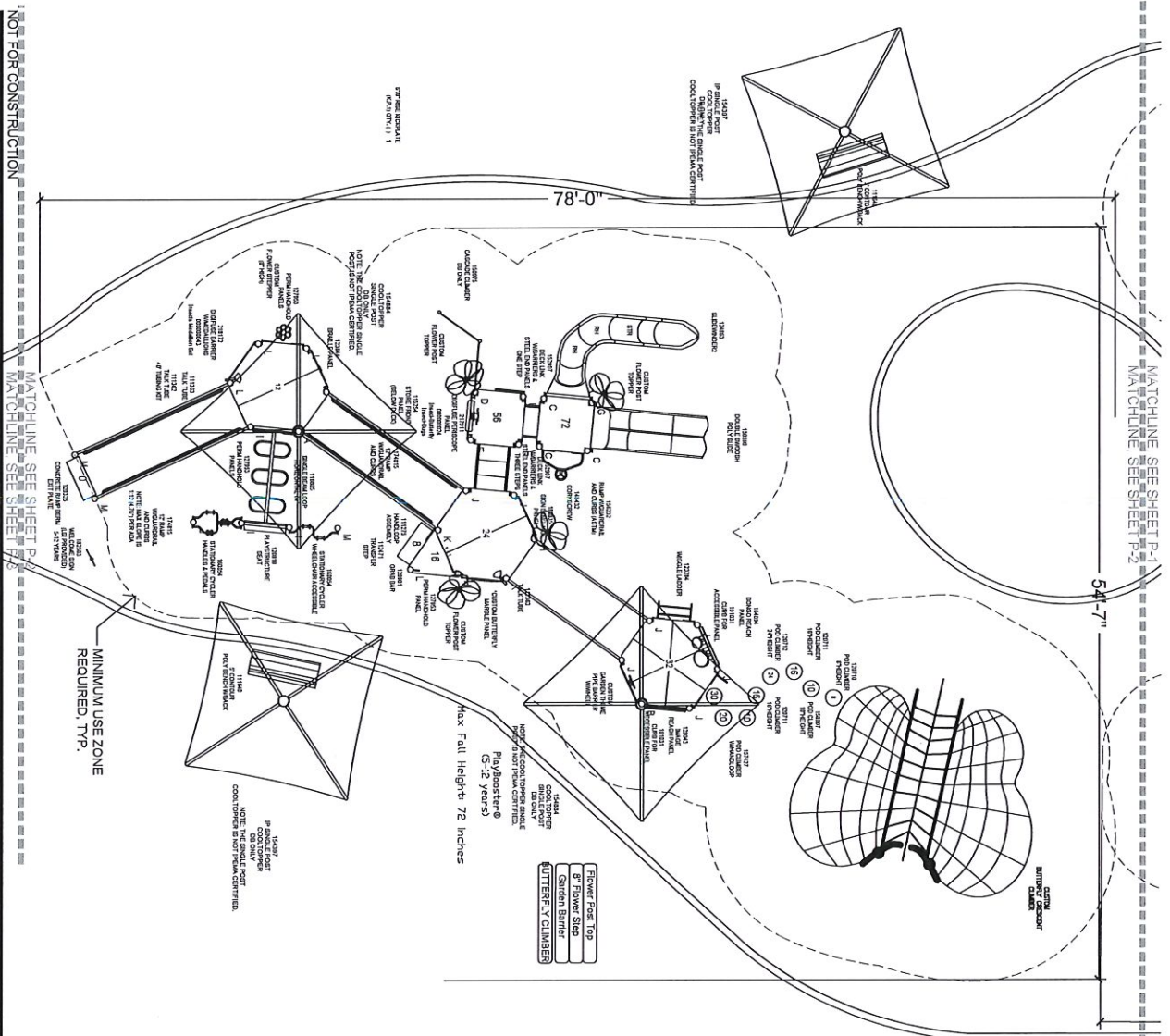


NOT TO SCALE

\*SEE SHEET P-4 FOR SITE LOCATION MAP ENLARGEMENT



# Older Kids' Area Garden of the Five Senses Playground North Port, FL



- GENERAL NOTES:**
- EQUIPMENT LOCATION TO BE FIELD VERIFIED PRIOR TO CONSTRUCTION
  - ACCESSIBLE ROUTE OF TRAVEL TO THE PLAYGROUND TO BE PROVIDED BY OTHERS
  - BASE MUST EXHIBIT POSITIVE DRAINAGE IN ALL AREAS
- POSTARCH LENGTHS**
- A 249 Steel Post For CoolToppers
  - B 221 Steel Post For CoolToppers
  - C 124 Alum Post DB
  - D 116 Alum Post DB
  - E 110 Alum Post For Roof DB
  - F 100 Alum Post DB
  - G 92 Alum Post DB
  - H 84 Alum Post DB
  - I 78 Alum Post DB
  - J 108 Alum Post DB
  - K 100 Alum Post DB
  - L 92 Alum Post DB
  - M 76 Alum Post DB
- POSTARCH LENGTHS**
- A 265 Steel Post For CoolToppers
  - B 233 Steel Post For CoolToppers
  - C 148 Alum Post DB
  - D 142 Alum Post DB
  - E 140 Alum Post DB
  - F 132 Alum Post DB
  - G 124 Alum Post DB
  - H 118 Alum Post DB
  - I 116 Alum Post DB
  - J 108 Alum Post DB
  - K 100 Alum Post DB
  - L 92 Alum Post DB
  - M 76 Alum Post DB

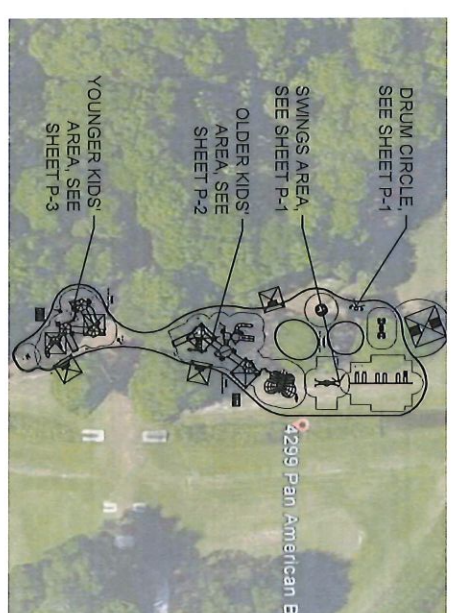
**NUMBER AND TYPES OF GROUND LEVEL PLAY COMPONENTS REQUIRED**

2-5 AGE AREA		5-12 AGE AREA	
TOTAL ELATED PLAY COMPONENTS	13	TOTAL ELATED PLAY COMPONENTS	16
TOTAL ELATED COMPONENTS ACCESSIBLE BY RAMP	10	TOTAL ELATED COMPONENTS ACCESSIBLE BY RAMP	12
TOTAL ELATED COMPONENTS ACCESSIBLE BY TRANSFER	13	TOTAL ELATED COMPONENTS ACCESSIBLE BY TRANSFER	16
TOTAL ACCESSIBLE GROUND LEVEL COMPONENTS SHOWN	5	TOTAL ACCESSIBLE GROUND LEVEL COMPONENTS SHOWN	16
TOTAL DIFFERENT TYPES OF GROUND LEVEL COMPONENTS	4	TOTAL DIFFERENT TYPES OF GROUND LEVEL COMPONENTS	10
	REQUIRED 0		REQUIRED 0
	REQUIRED 7		REQUIRED 8
	REQUIRED 0		REQUIRED 0

Playground equipment meets the requirements of FBC Accessibility Code, Table 2402.1.2

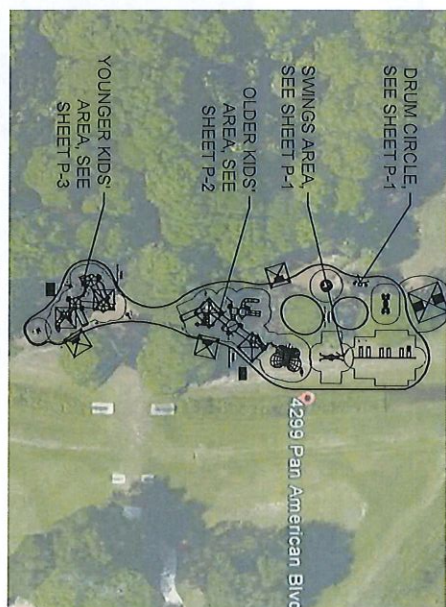
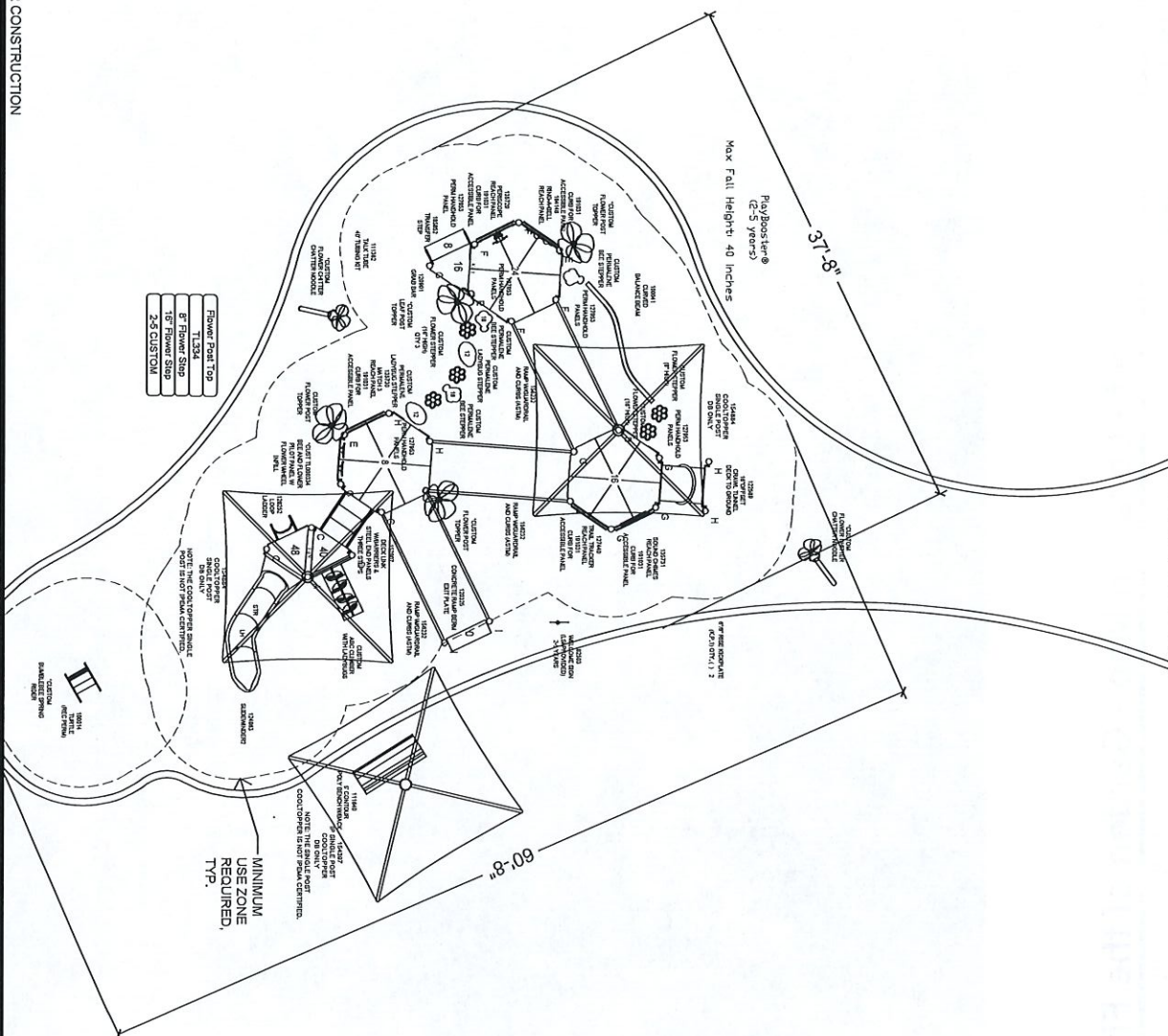
**SHEET NO. P-2**  
**PAPER SIZE B**

## SITE LOCATION MAP



NOT TO SCALE  
\*SEE SHEET P-4 FOR SITE LOCATION MAP ENLARGEMENT





## SITE LOCATION MAP

NOT TO SCALE  
\*SEE SHEET P-4 FOR  
SITE LOCATION MAP  
ENLARGEMENT

## POST/ARCH LENGTHS

- A 24g Steel Post For CoolToppers  
B 221 Steel Post For CoolToppers  
C 124 Alum Post DB  
D 116 Alum Post DB  
E 110 Alum Post For Roof DB  
F 100 Alum Post DB  
G 92 Alum Post DB  
H 84 Alum Post DB  
I 76 Alum Post DB

## POST/ARCH LENGTHS

- A 265 Steel Post For CoolToppers  
B 233 Steel Post For CoolToppers  
C 148 Alum Post DB  
D 142 Alum Post For Roof DB  
E 140 Alum Post DB  
F 132 Alum Post DB  
G 124 Alum Post DB  
H 118 Alum Post For Roof DB  
I 116 Alum Post DB  
J 108 Alum Post DB  
K 100 Alum Post DB  
L 92 Alum Post DB  
M 76 Alum Post DB

**GENERAL NOTES:**

1. EQUIPMENT LOCATION TO BE FIELD VERIFIED PRIOR TO CONSTRUCTION
2. ACCESSIBLE ROUTE OF TRAVEL TO THE PLAYGROUND TO BE PROVIDED BY OTHERS
3. BASE MUST EXHIBIT POSITIVE DRAINAGE IN ALL AREAS

## SURFACING

- 8645 SF  
POURED-IN-PLACE  
9' FALL HEIGHT  
710 LF CONCRETE CURB

SHEET NO.  
**P-3**  
PAPER SIZE

RSI PROJ: 12606  
DRAWING: 107370-1-2

NOT FOR CONSTRUCTION

SCALE: 1/8" = 1'

0 4 8 16

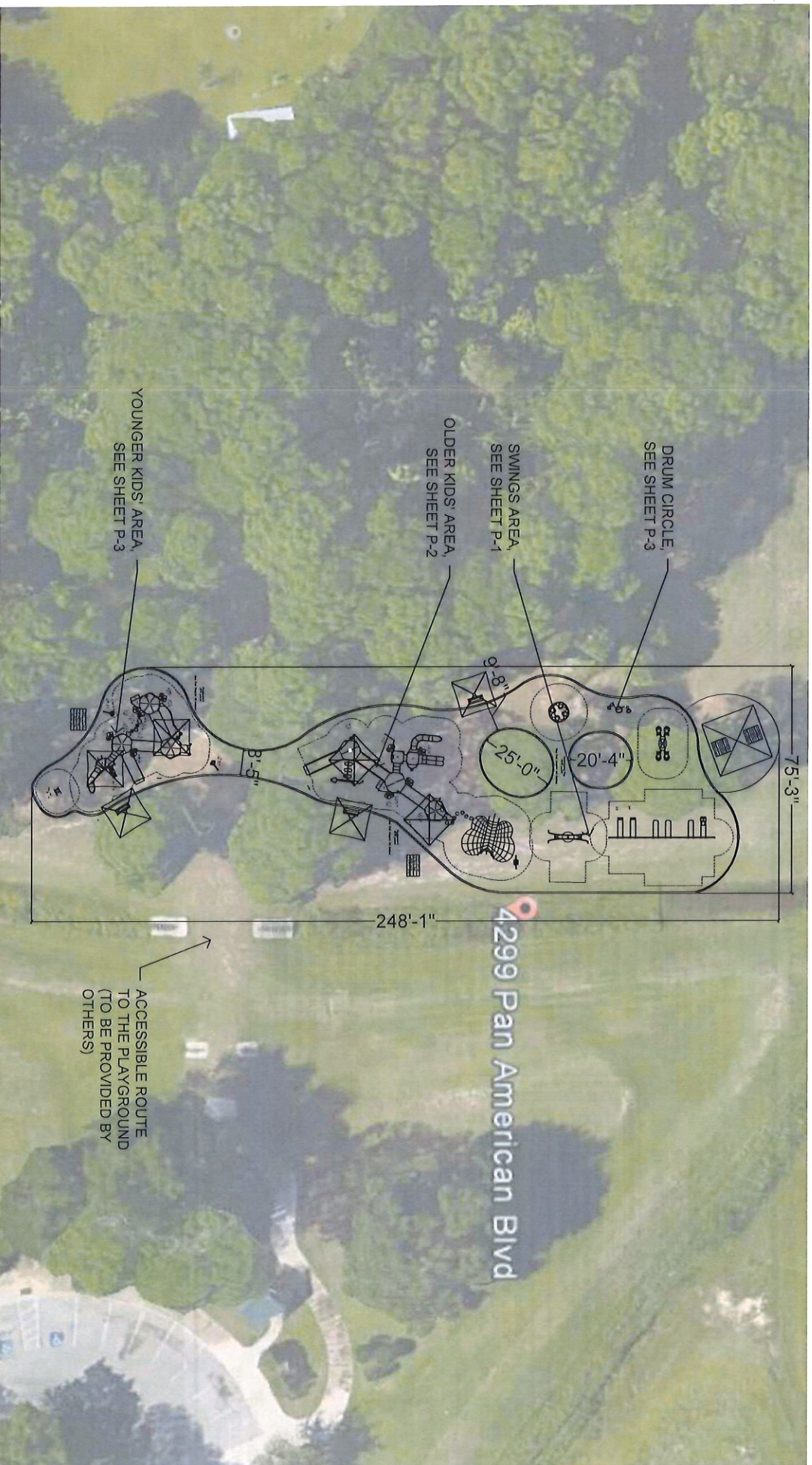


## Younger Kids' Area Garden of the Five Senses Playground

**REP SERVICES, INC.** *W*  
Experts at Play & Outdoor Spaces  
landscape structures







**GENERAL NOTES:**

1. EQUIPMENT LOCATION TO BE FIELD VERIFIED PRIOR TO CONSTRUCTION
2. ACCESSIBLE ROUTE OF TRAVEL TO THE PLAYGROUND TO BE PROVIDED BY OTHERS
3. BASE MUST EXHIBIT POSITIVE DRAINAGE IN ALL AREAS NOT FOR CONSTRUCTION

**Site Location Map - Garden of the Five Senses Playground**

North Port, FL

