



DEPARTMENT OF PUBLIC WORKS

MARCH 7, 2019



Administration



Operations



Facilities
Maintenance



Engineering



Fleet



Solid Waste



PUBLIC WORKS

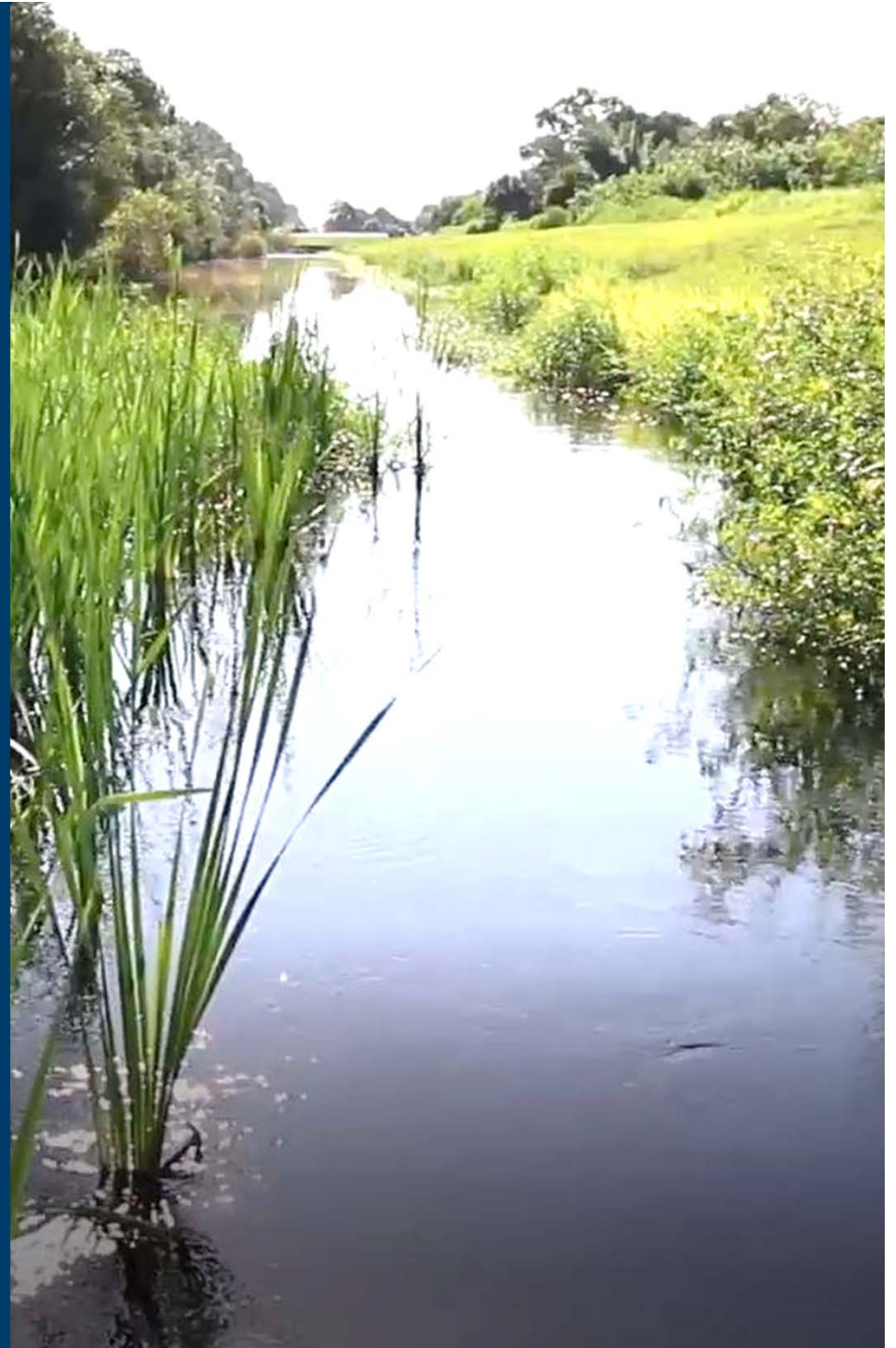
STORMWATER

MANAGEMENT PLAN

North Port Drainage System



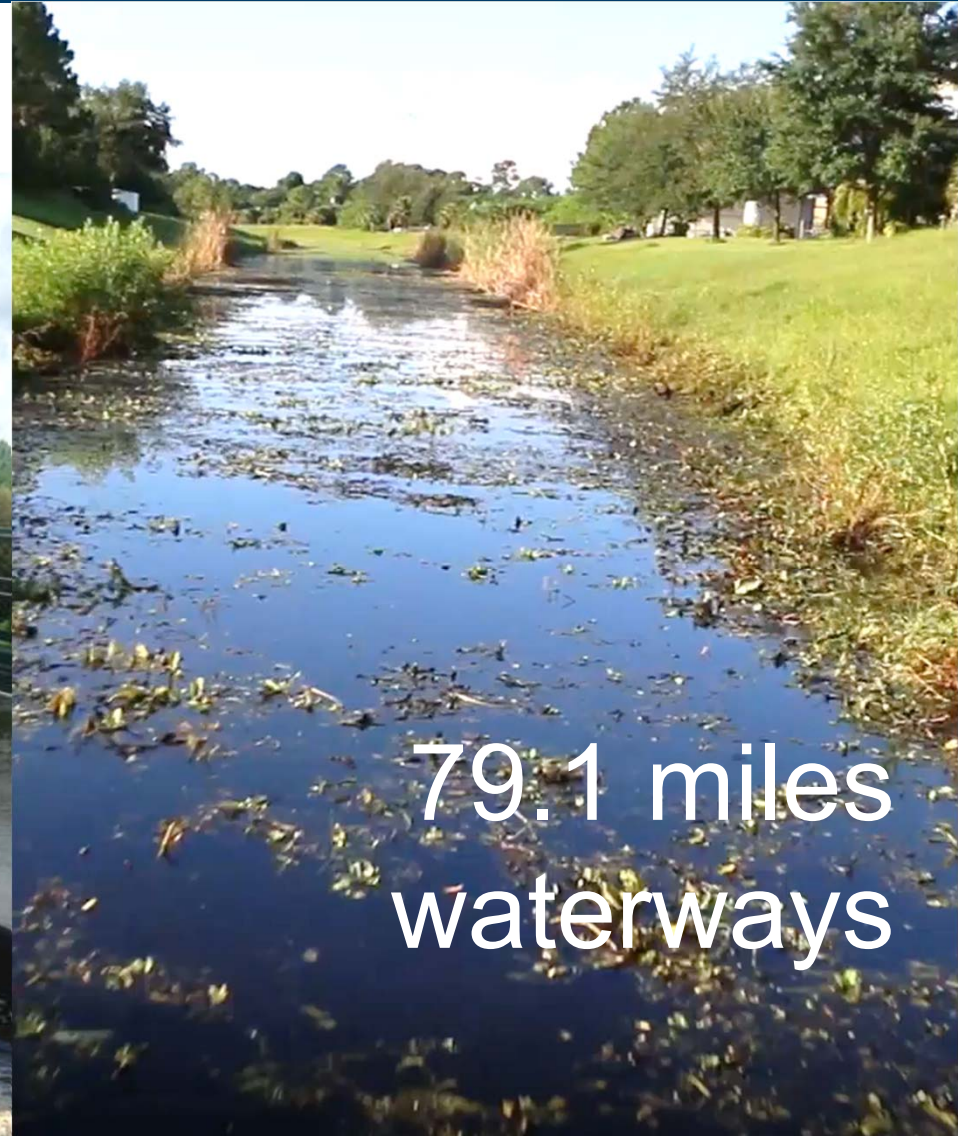
- **Infrastructure**
- **Maintenance**
- **Plan**
- **Future**



Infrastructure



64 water
control
structures



79.1 miles
waterways

Infrastructure



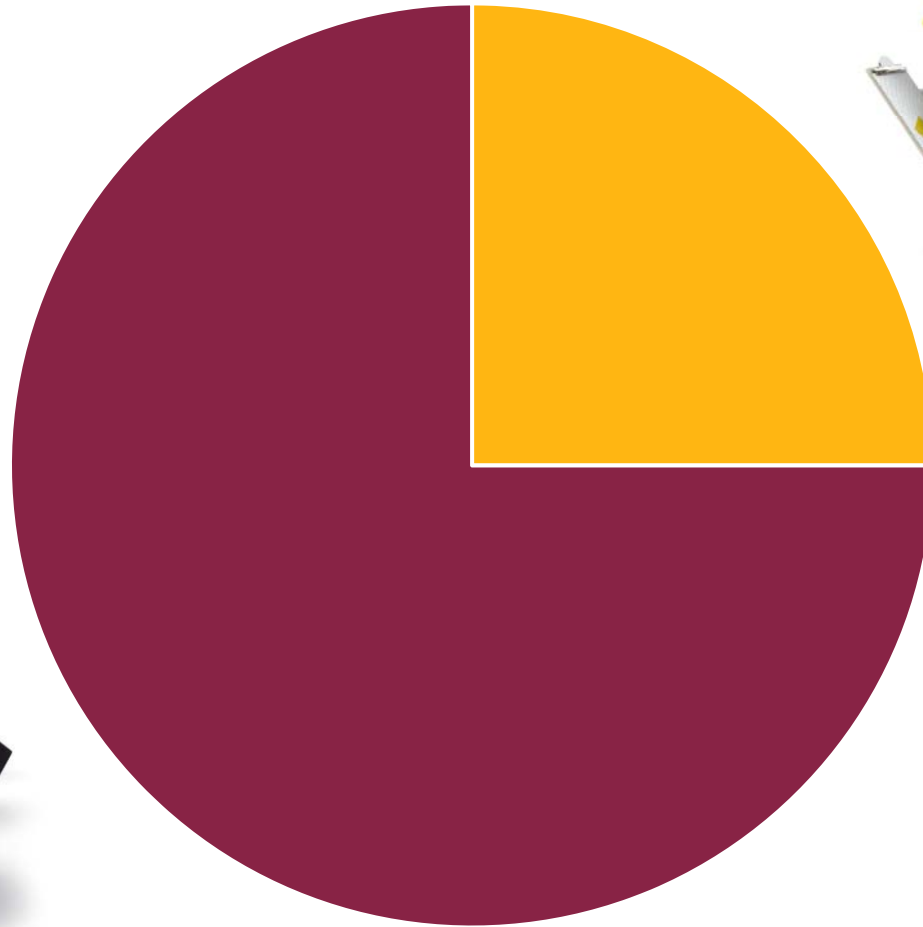
Infrastructure



Constructed in the 1960's



Maintenance



■ Preventative ■ Reactive

Plan

- Water Control Structures
- Drainage Program
- Responsive Improvements
- Waterway, Lake, Pond and Myakkahatchee Creek Maintenance
- Flood Reduction Studies



DEPARTMENT OF PUBLIC WORKS
10-YEAR STORMWATER MANAGEMENT PLAN
(FISCAL YEARS 2019 to 2028)

May 2018

Plan – Water Control Structures

Water Control Structure (WCS)	Design	Construct	Cost
WCS 115 on Snover Waterway, west of Chamberlain Blvd	2017	2018	\$1,172,577 (actual)
WCS 106 on Cocoplum Waterway, west of North Port Blvd	2018	2019	\$3,080,000 (budget)
WCS 108 on Cocoplum Waterway, west of Collingswood Blvd	2020	2021	\$2,738,000 (estimate)
WCS 113 on Snover Waterway, just east of its intersection with the Myakkahatchee Creek, near Welco St and Battersea Ave	2021	2022	\$4,528,000 (estimate)

Plan – Water Control Structures

Before



After

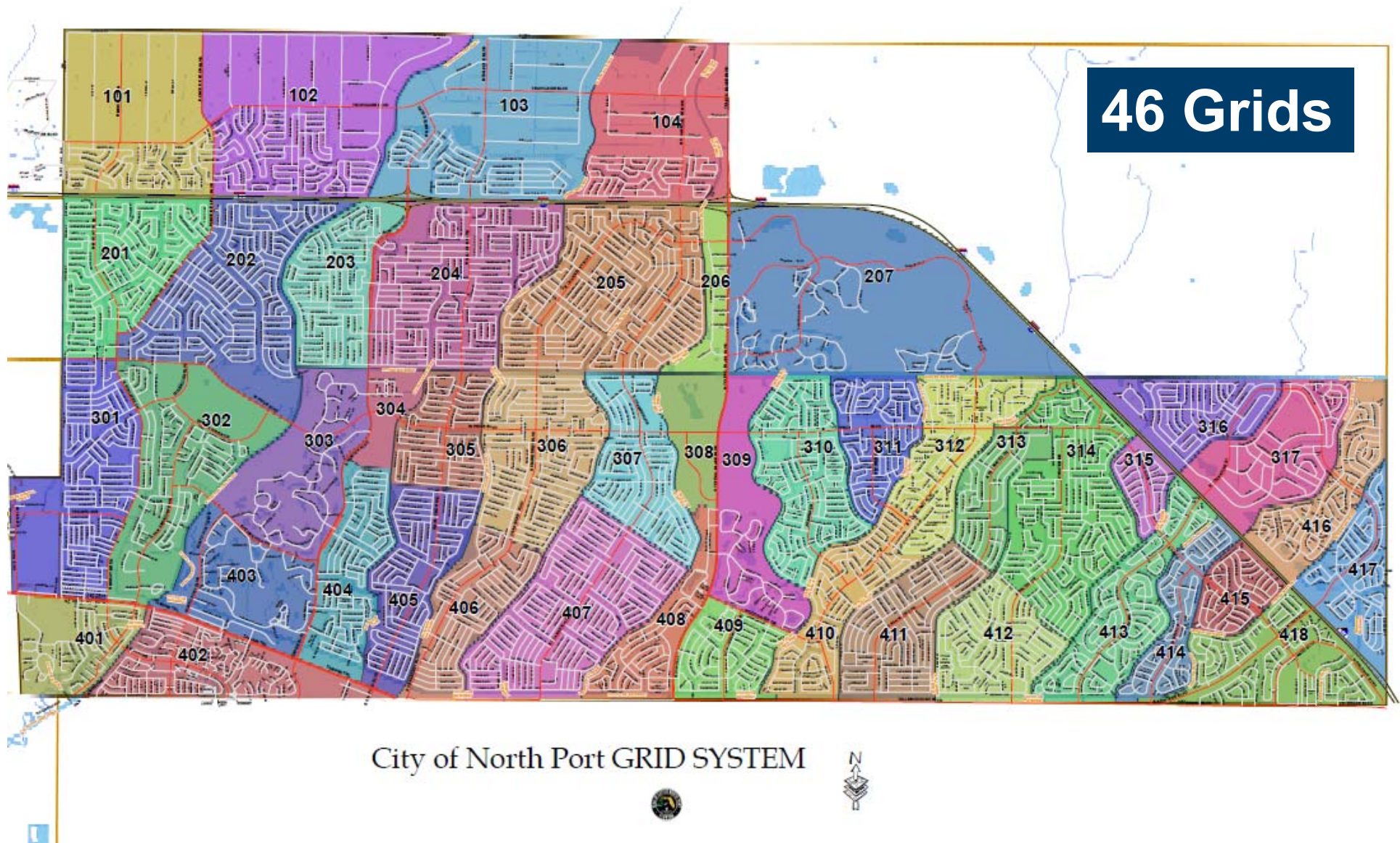


Plan – Drainage Program

- Neighborhood Rehabilitation by Grid
- Road Crossing Pipe Replacement
- Outfall Lining or Replacement
- Tractor Crossing Pipe Replacement
- Swale Full Front Piping



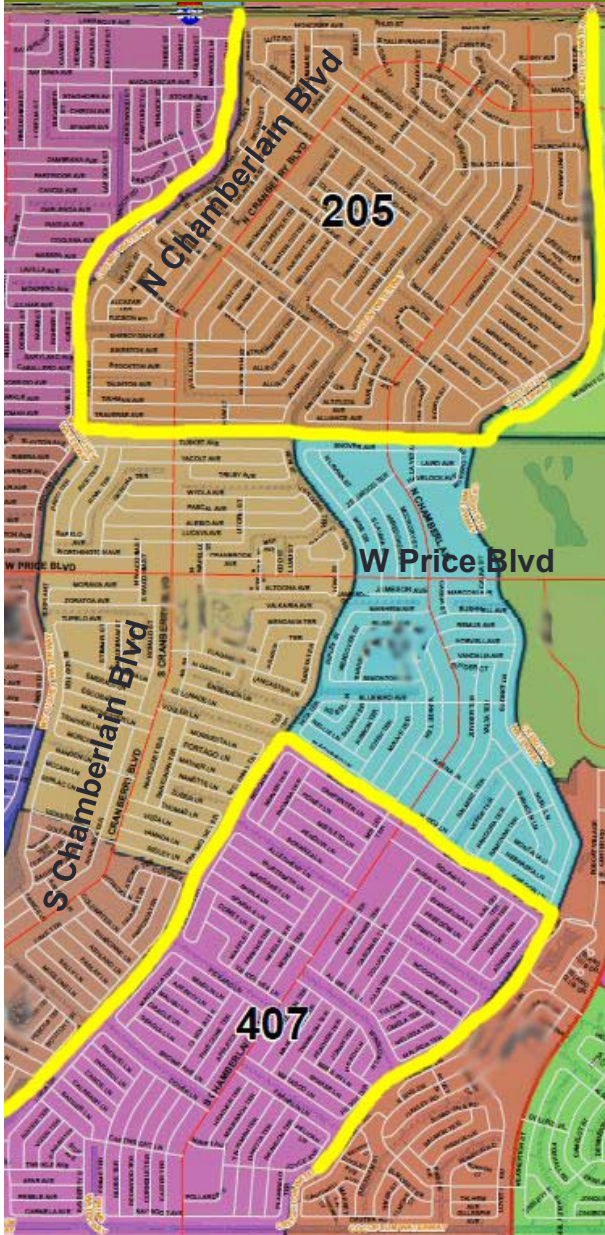
Plan - Neighborhood Rehabilitation by Grid



Plan - Neighborhood Rehabilitation by Grid



Plan - Neighborhood Rehabilitation by Grid



- Grid 205: FY2017 – FY2019

- Grid 407: FY2019 – FY2020

Plan

- Road Crossing Pipe Replacement

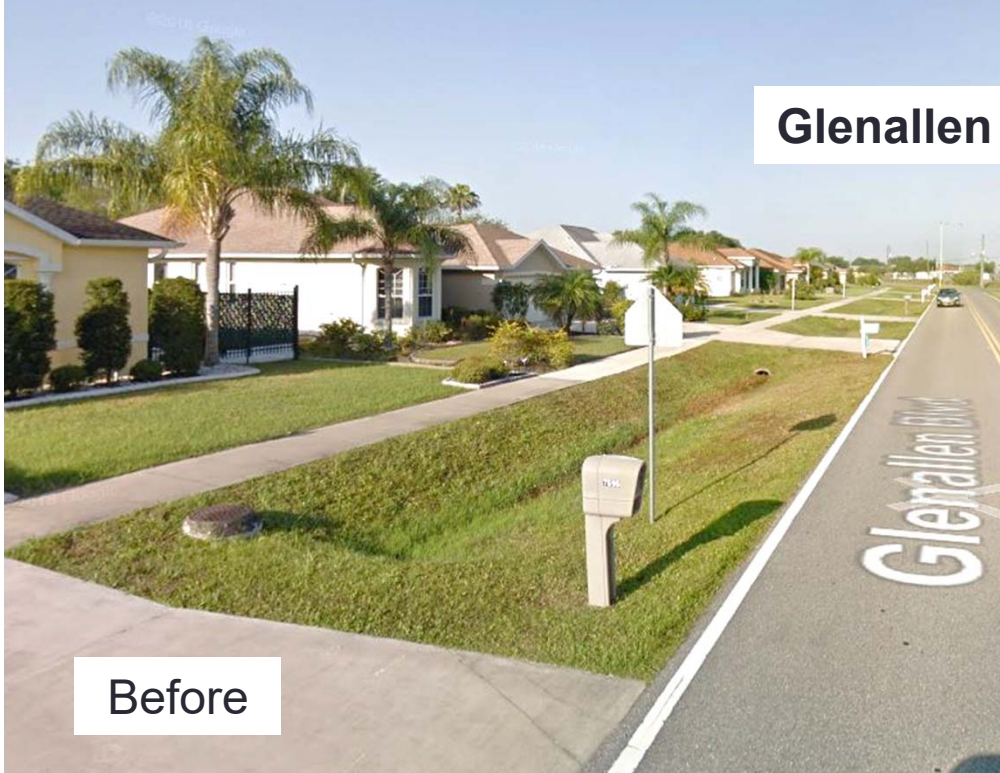


- Outfall Lining or Replacement

Plan

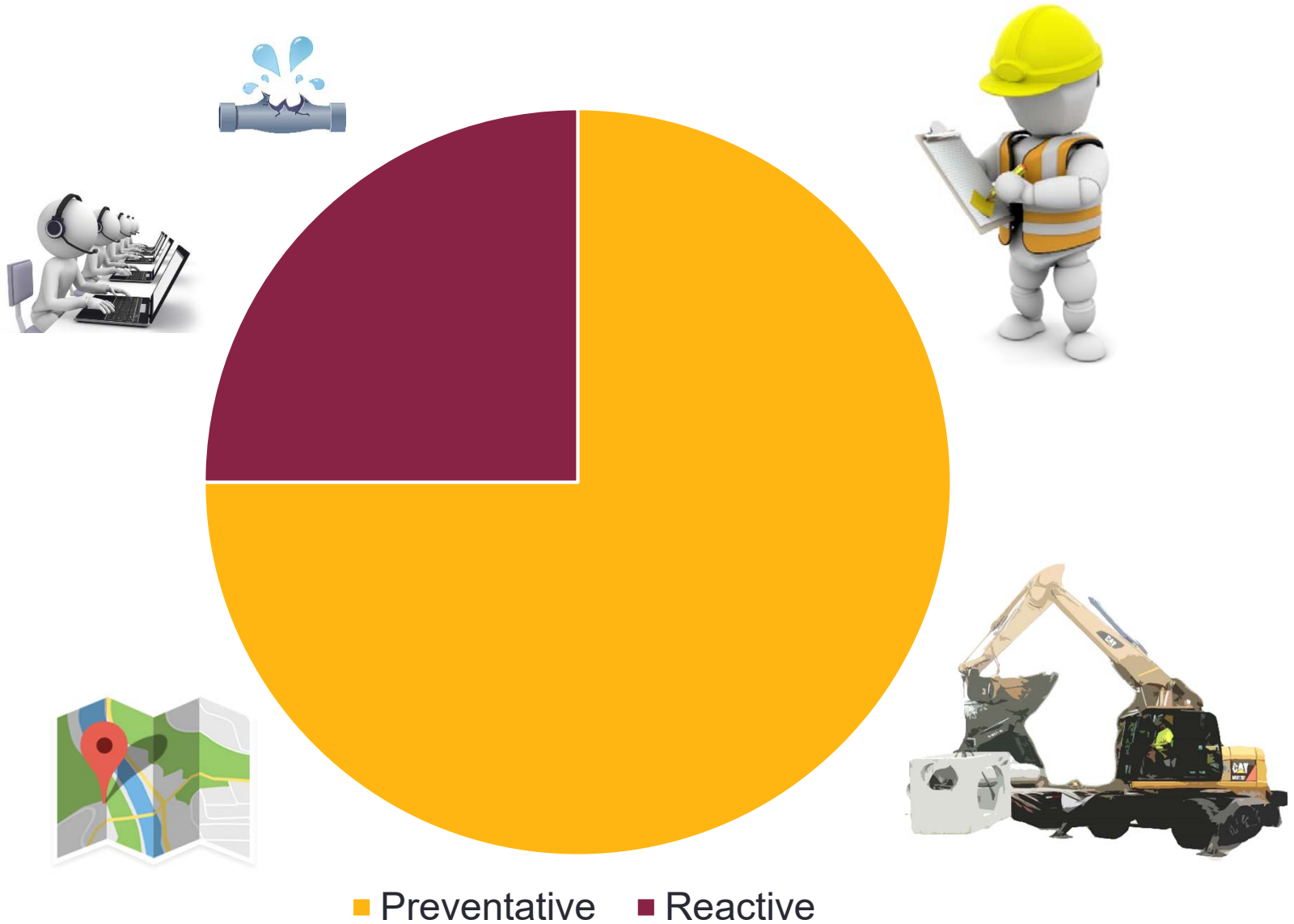
- Swale Full Front Piping

Glenallen Boulevard



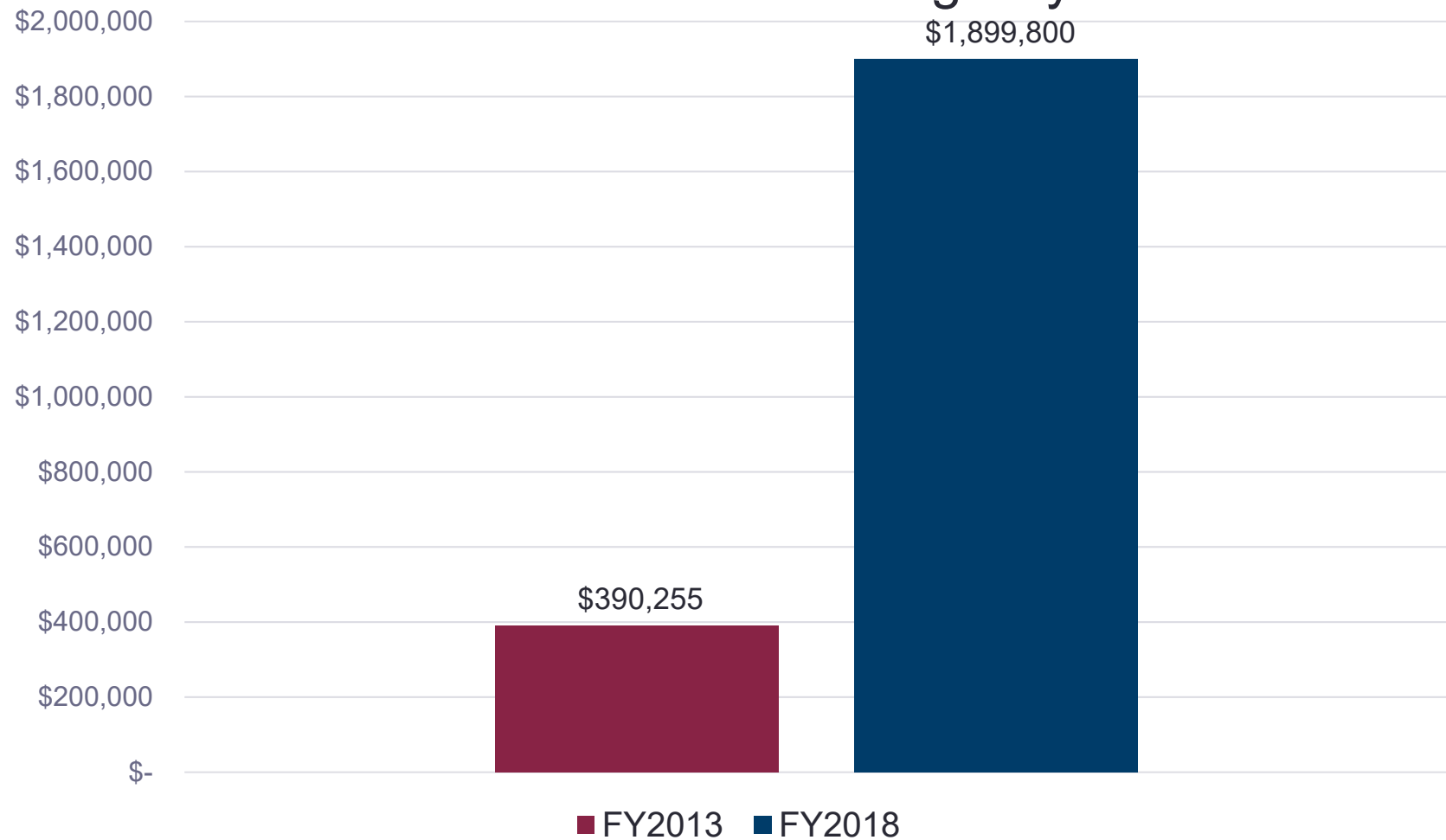
- Tractor Crossing Pipe Replacement

Plan



Plan

Funds Dedicated to Drainage System



Plan

- Waterway, Lake, Pond, and Myakkahatchee Creek Maintenance



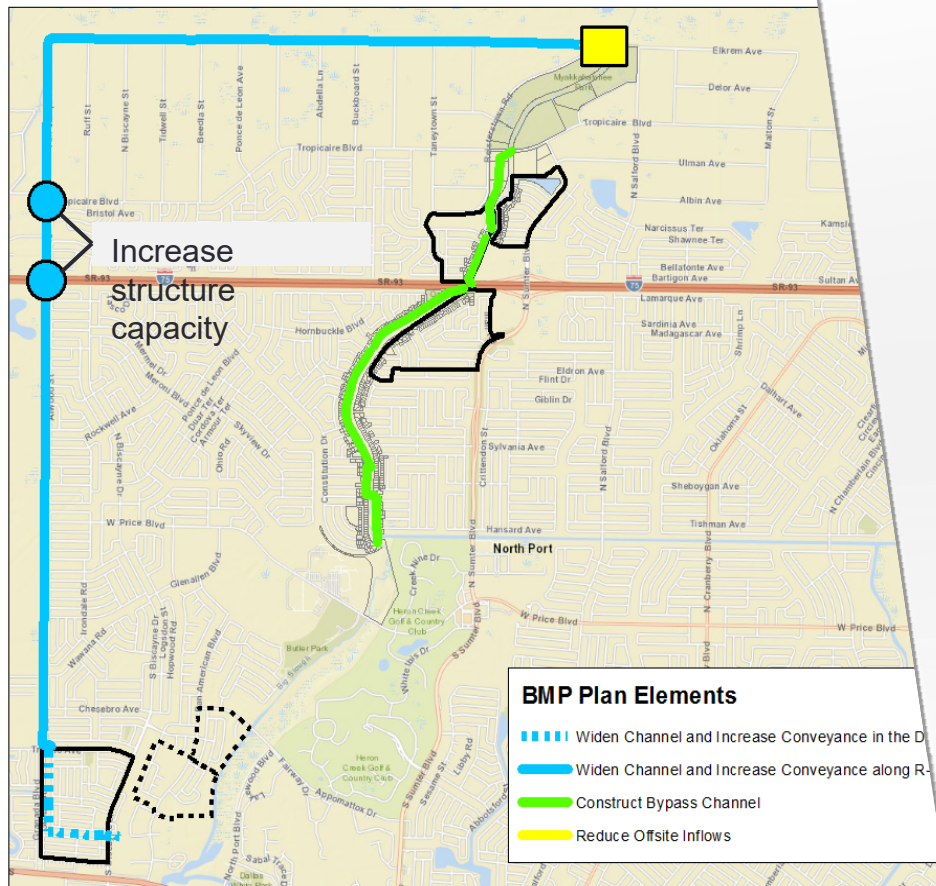
Debris in Myakkahatchee Creek



Snover Waterway Sandbar Removal

Plan

- Flood Reduction Study



City of North Port

Professional Engineering Services for the
Big Slough Flood Reduction Study

Agreement #2016-48
Department of Public Works

STORMWATER MANAGEMENT PLAN



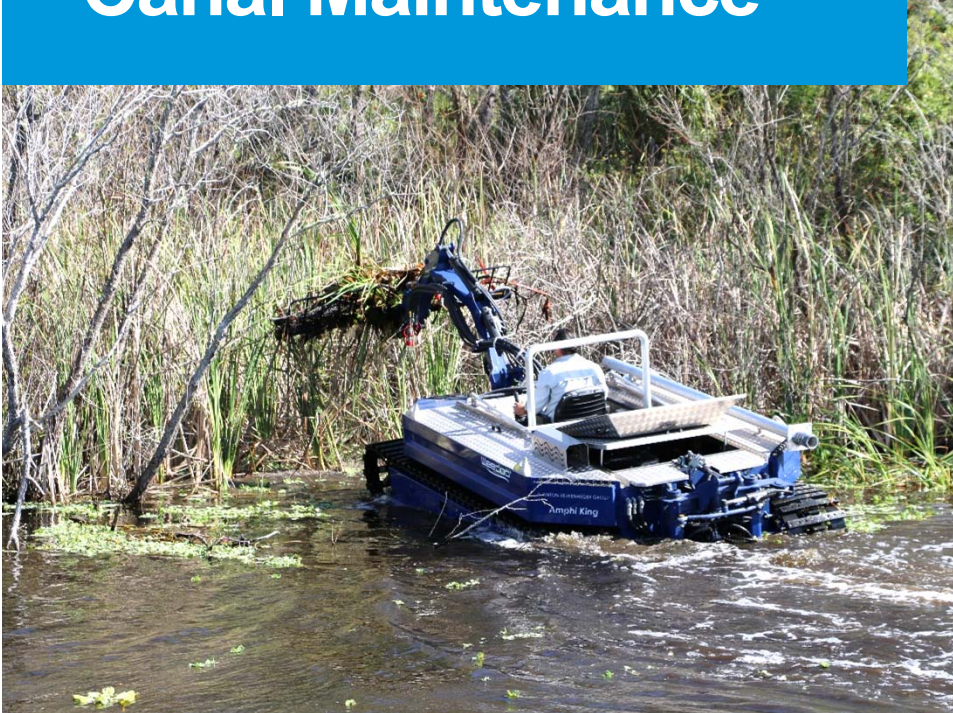
February 2019

DeLoach Engineering Science, PLLC
1845 Ivanhoe Road | Orlando, FL 32804

DeLoach Engineering Science
water resources and civil engineering

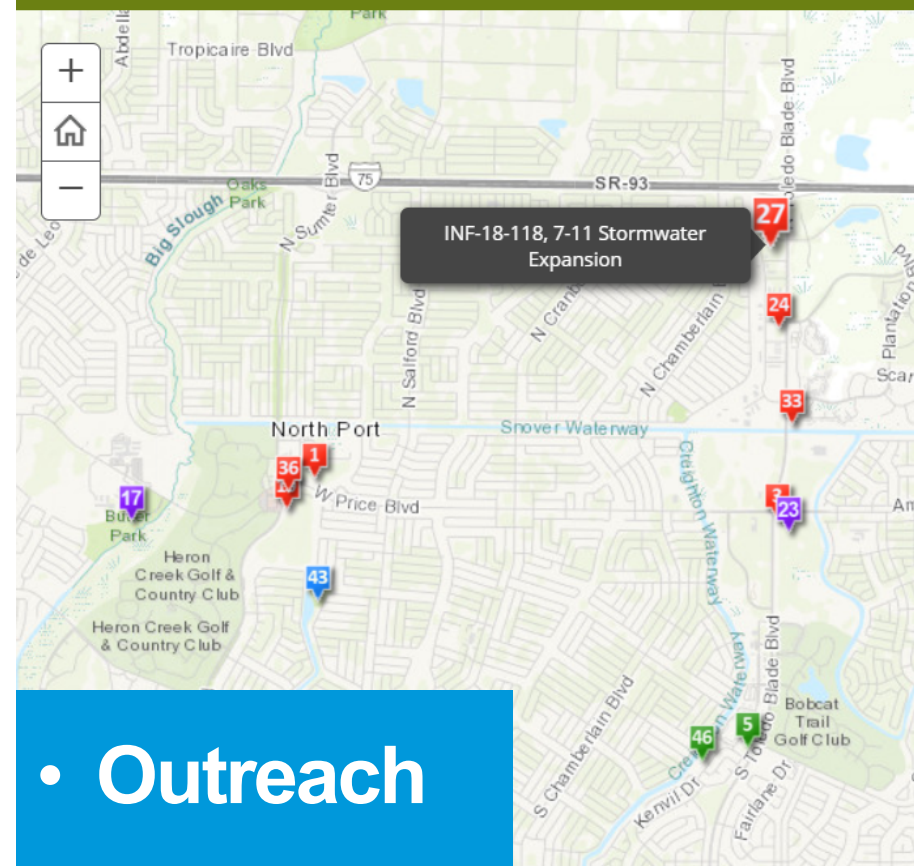
Future

- Canal Maintenance



Current Development Map

City of North Port, FL



- Outreach