

SUPPORTING NORTH PORT'S WATER RESOURCE PROTECTION EFFORTS



Jennifer Hecker, Executive Director
December 7, 2017

Protecting and restoring water resources from Venice to Bonita Springs to Winter Haven



Who We Are



- Formed in 1995 and one of only 28 Congressionally designated “national estuaries” in the United States
- Receive special funding and support from USEPA under the Clean Water Act to protect and restore water resources in the CHNEP “study area”

Protecting and restoring water resources from Venice to Bonita Springs to Winter Haven



Where We Work

- CHNEP study area encompasses 4,700 sq. mile
- Estuaries include Lemon Bay, Dona & Roberts Bay, Charlotte Harbor, Pine Island Sound, Caloosahatchee, San Carlos Bay and Estero Bay
- Rivers including Myakka, Peace, Caloosahatchee, and Estero
- Inland and coastal Communities including 8 counties and 10 cities



Protecting and restoring water resources from Venice to Bonita Springs to Winter Haven



What We Do

Address 4 Priority Problems:

1. Hydrologic Alterations
2. Water Quality Degradation
3. Fish & Wildlife Habitat Loss
4. Stewardship Gaps



Through:

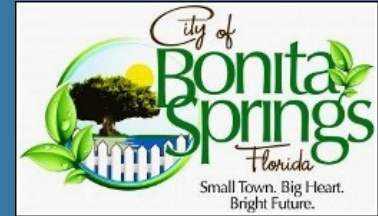
*Restoration
Research
Education
Advocacy*



Protecting and restoring water resources from Venice to Bonita Springs to Winter Haven



Some of Our Many Partners



and many more...

Protecting and restoring water resources from Venice to Bonita Springs to Winter Haven



The Power of Partnership

CHNEP is:

- Public-private partnership
- Consensus-based
- Non-regulatory
- Science-based



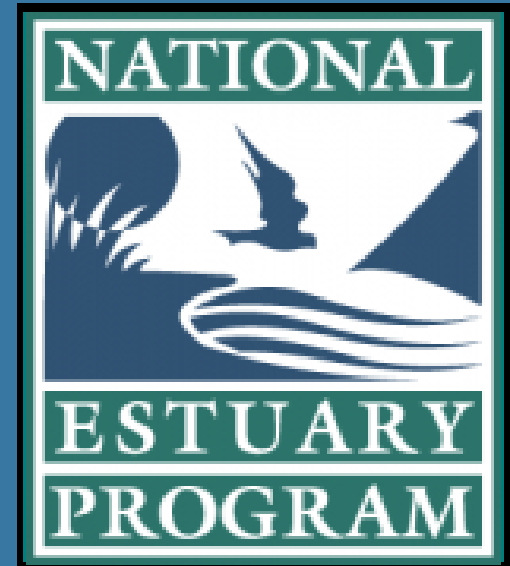
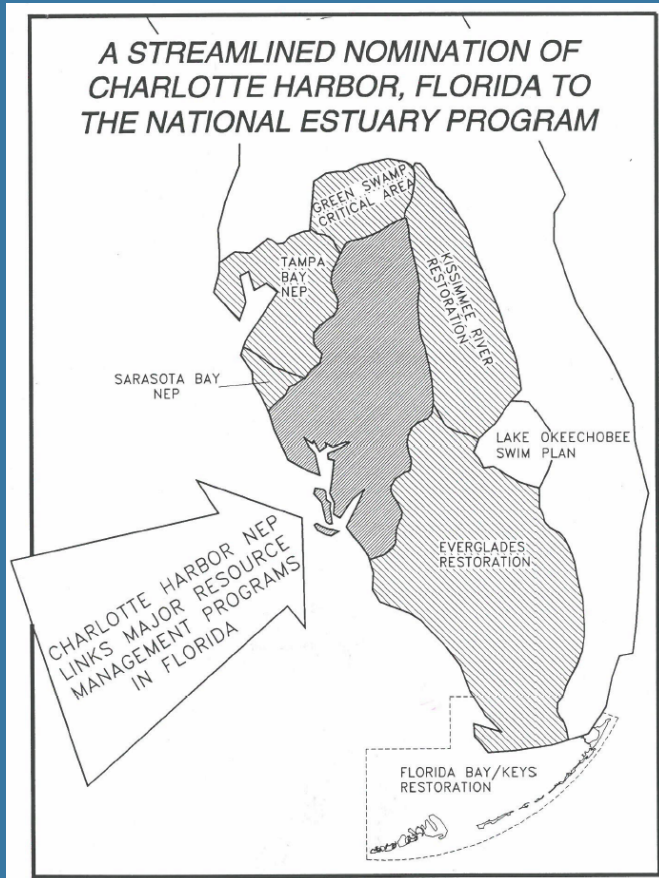
CHNEP, because of private contributions, volunteers and donated in-kind services has been able to provide 35 dollars of restoration for every dollar it received of governmental funding!

Protecting and restoring water resources from Venice to Bonita Springs to Winter Haven



How We Fit into Big Picture

CHNEP was designed to dovetail with Everglades and other major restoration initiatives back when formed in 1995.

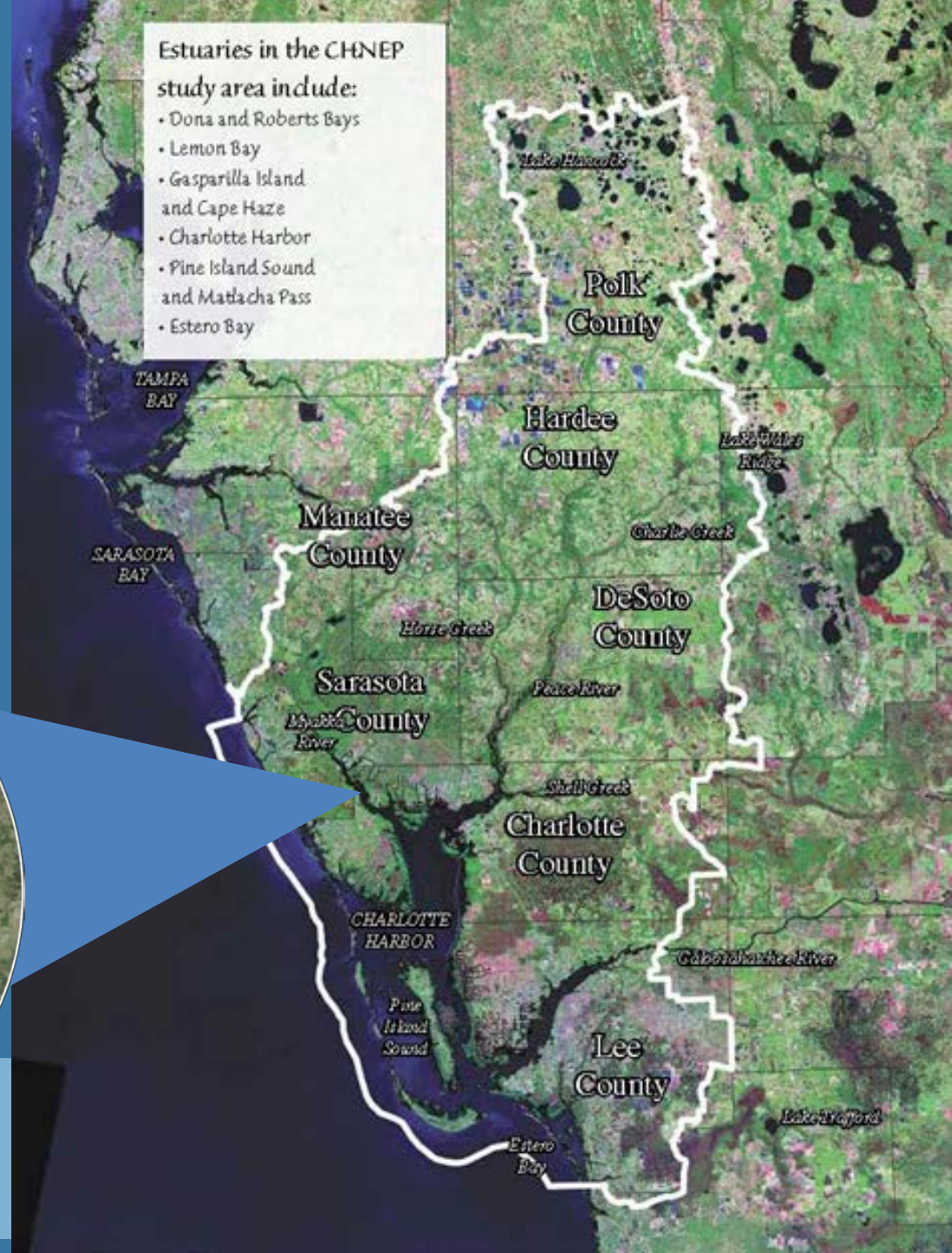
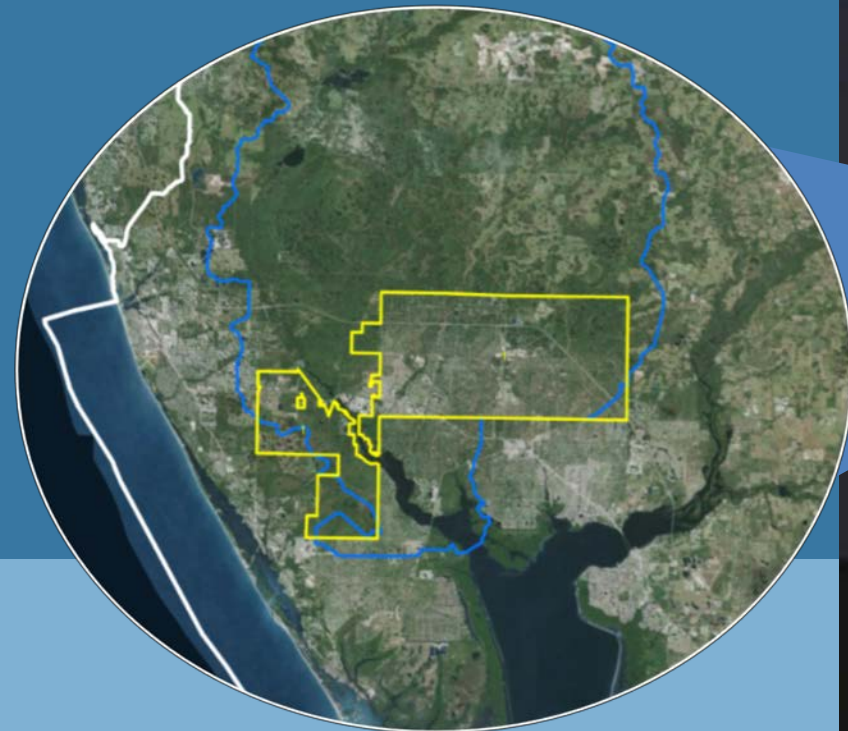


Protecting and restoring water resources from Venice to Bonita Springs to Winter Haven



Where We Intersect

Our work covers this entire area, including North Port).



Aligning with Your Goals

Numerous City of North Port Comp Plan objectives align with the CHNEP including:

- **Stormwater Goal 1:** stormwater management that preserves natural resources, maintains recharge to the surficial aquifer and maintains or improved the quality of surface water runoff
- **Conservation Goal 1:** protect and enhance critical water resources, flora and fauna, and wildlife habitat

Objective 7: The City will continue to implement programs and procedures for the protection, preservation and conservation of coastal water resources and fresh water resources, including, but not limited to waterways and canals.

Policy 7.1: The City, which has representation on the Charlotte Harbor National Estuary Program, shall continue to coordinate with this body by participating in its resource planning and management activities, as directed by the Southwest Florida Regional Planning Council.

Protecting and restoring water resources from Venice to Bonita Springs to Winter Haven



CHNEP's Support of North Port To Date

CHNEP has directly funded over \$99,000 for project and activities in North Port. Some examples include:

- Study on impact of wastewater package plants on the Peace and Myakka
- Myakka River Park hydrologic restoration project
- Study on impact and management techniques to control West Indian marsh grass in Myakka River
- Numerous microgrants and public outreach grants to community orgs. (including to City of North Port's Park and Rec Dept. and schools) undertaking env. education or restoration activities in North Port



Protecting and restoring water resources from Venice to Bonita Springs to Winter Haven



Examples of How We Continue to Assist North Port's Effort

Environmental Education:

- Harbor Happenings magazine, which has included North Port info. such as on its cisterns
- Provide free copies of Adventures in the Charlotte Harbor Watershed to North Port elementary teachers

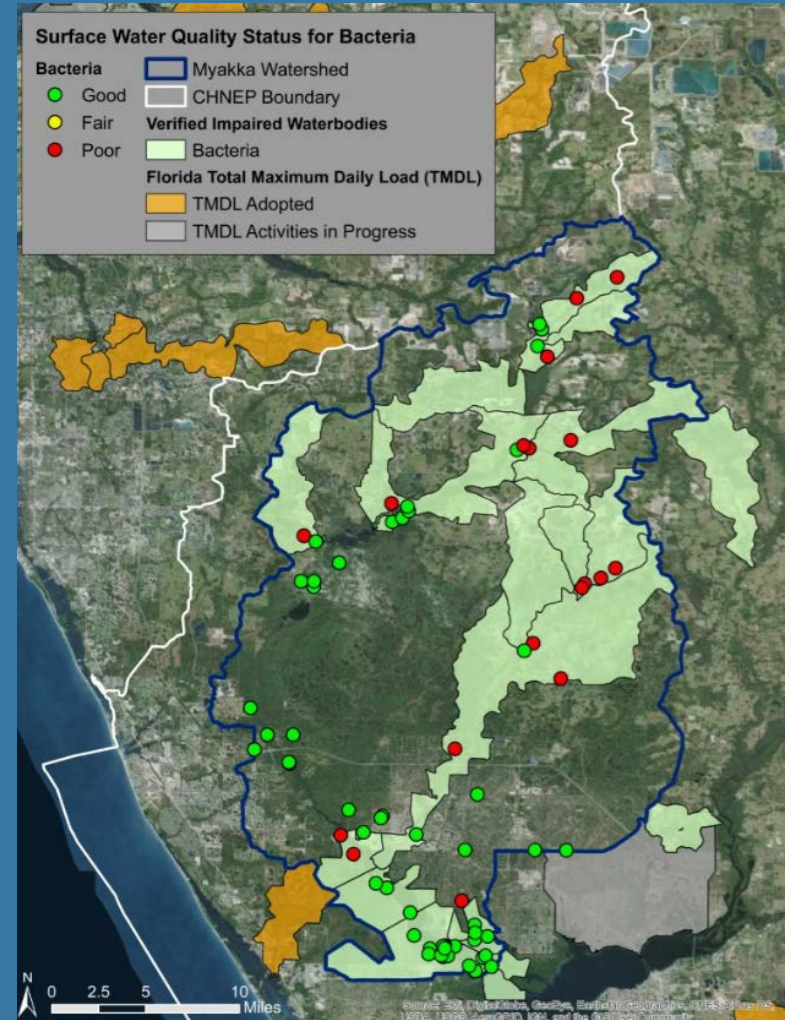
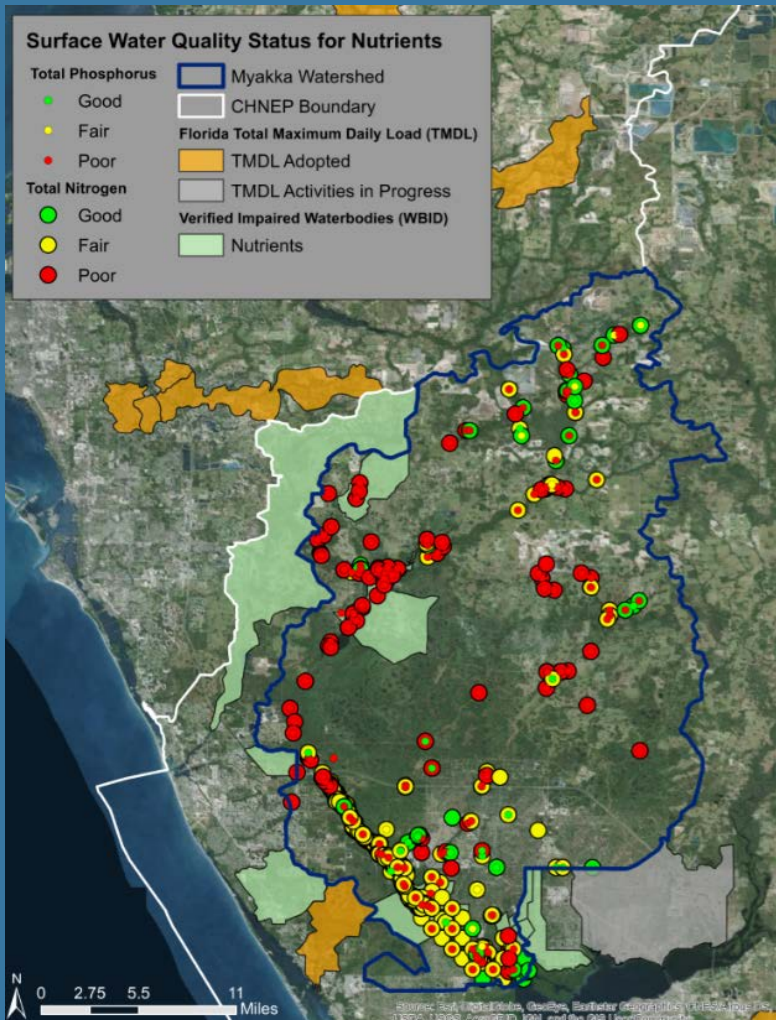
Water Resource Protection:

- Water quality data gathered and conduct trends analysis, uploading into public Water Atlas site
- Periodic water quality status reports created with updated data to provide to County and others

Protecting and restoring water resources from Venice to Bonita Springs to Winter Haven



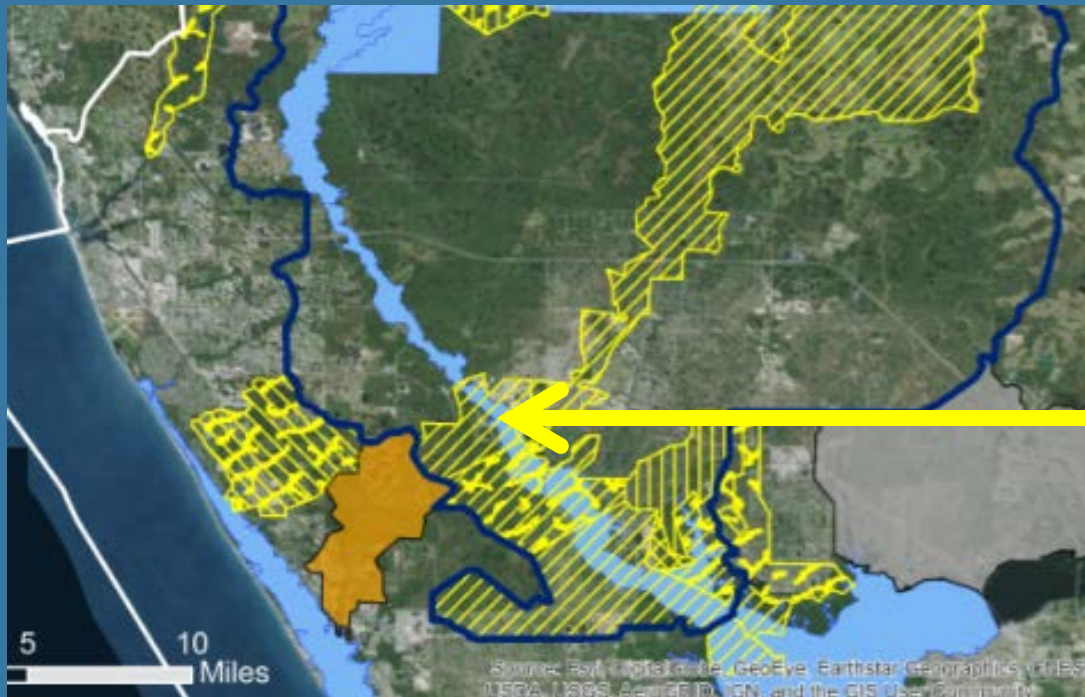
Local Water Quality Issues



Protecting and restoring water resources from Venice to Bonita Springs to Winter Haven



Still Work to Do in Improving Water Quality



Many of North Port's waters are "impaired" – including designated Outstanding Florida Waters (light blue covered with yellow crosshatching).

Protecting and restoring water resources from Venice to Bonita Springs to Winter Haven



North Port is a Valued and Critical Partner to CHNEP

We commit to:

.....

1. Keep you informed
2. Continue protecting and restoring North Port's resources
3. Assist your efforts to reach your water protection goals



Your continued participation and support is critical to our efforts to restore the water resources in and around North Port.

Protecting and restoring water resources from Venice to Bonita Springs to Winter Haven

