

FY25 Adopted Total All Funds Budget Cost Summary

FUNDS	FY25 Adopted Budget	% of Total Budget	Full-Time Equivalent Positions (FTEs)
GENERAL FUND (By Department)			
City Attorney	\$ 1,886,690	0.67%	8.00
City Clerk	910,890	0.33%	8.00
City Commission	584,950	0.21%	5.00
City Manager	1,880,580	0.67%	9.75
Communications	1,136,920	0.41%	11.00
Economic Development	846,670	0.30%	5.00
Emergency Medical Services*	14,373,630	5.13%	0.00
Finance	2,937,110	1.05%	20.00
Facilities Maintenance	5,548,170	1.98%	16.50
Human Resources	1,871,130	0.67%	14.00
Information Technology	4,724,220	1.69%	22.00
Parks & Recreation	7,614,330	2.72%	61.25
Planning & Zoning	2,020,610	0.72%	17.00
Police	37,969,420	13.55%	212.10
Code Enforcement	621,900	0.22%	9.00
Social Services	682,250	0.24%	6.00
Non-Departmental	1,747,470	0.62%	0.00
Sub-total	\$ 87,356,940	31.17%	424.60
SPECIAL REVENUE FUNDS - DISTRICT			
Fire Rescue District	\$ 17,184,250	6.13%	158.00
Road & Drainage District	28,351,500	10.12%	108.00
Solid Waste District	13,934,960	4.97%	50.50
Sub-total	\$ 59,470,710	21.22%	316.50
SPECIAL REVENUE FUNDS - OTHER			
Building Fund	\$ 8,193,450	2.92%	47.00
Fleet Maintenance	8,429,590	3.01%	20.00
Inspector Education	41,820	0.01%	0.00
Law Enforcement Trust	7,320	0.00%	0.00
Police Education	17,000	0.01%	0.00
Tree Fund	2,603,540	0.93%	9.00
Warm Mineral Springs	1,358,240	0.48%	11.46
Fire Impact Fee	1,902,250	0.68%	0.00
Law Enforcement Impact Fee	1,694,000	0.60%	0.00
Parks & Recreation Impact Fee	1,638,020	0.58%	0.00
Solid Waste Impact Fee	1,400,000	0.50%	0.00
Transportation Impact Fee	12,398,760	4.42%	0.00
Sub-total	\$ 39,683,990	14.16%	87.46
DEBT SERVICE FUND			
Road Reconstruction Bond Debt	\$ 2,505,490	0.89%	0.00
CAPITAL FUNDS			
Surtax III	\$ 9,754,610	3.48%	0.00
R&R - General Fund	591,100	0.21%	0.00
R&R - Road and Drainage District	2,264,000	0.81%	0.00
R&R - Fire Rescue District	1,446,100	0.52%	0.00
R&R - Solid Waste District	1,865,000	0.67%	0.00
R&R - Fleet	20,000	0.01%	0.00
Sub-total	\$ 15,940,810	5.69%	0.00
ENTERPRISE FUNDS			
Utilities	\$ 51,425,580	18.35%	111.50
Water Capacity Fee	50,000	0.02%	0.00
Sewer Capacity Fee	294,270	0.11%	0.00
Sub-total	\$ 51,769,850	18.47%	111.50
INTERNAL SERVICE FUNDS			
Employee Benefit Fund	\$ 1,227,700	0.44%	0.00
Self-Insurance Medical Fund	16,887,970	6.03%	0.00
Self-Insurance Risk Fund	5,373,500	1.92%	0.00
Sub-total	\$ 23,489,170	8.38%	0.00
<b>**TOTAL CITY BUDGET</b>	<b>\$ 280,216,960</b>	<b>100.00%</b>	<b>940.06</b>

\*Emergency Medical Services authorized positions are shown in the Fire Rescue District.

\*\*Totals exclude transfers and reserves.



Community Connection

Citizen's Guide to the  
Fiscal Year (FY) 2025 Budget

2024 City Commission

Alice White Mayor District Seat 1	Phil Stokes Vice Mayor District Seat 5
Barbara Langdon Commissioner District Seat 2	Debbie McDowell Commissioner District Seat 3
Pete Emrich Commissioner District Seat 4	

Charter Offices

A. Jerome Fletcher II City Manager	
Amber L. Slayton City Attorney	Heather Faust City Clerk

Vision

An innovative, friendly, engaging, and sustainable community where residents, businesses, and visitors flourish.

Mission

To provide exceptional service to our entire community for the continuous enrichment of quality of life through transparency, engagement and respect.

Values

Accountability | Integrity | Customer Service  
Teamwork | Empowered Employees  
Diversity | Innovation

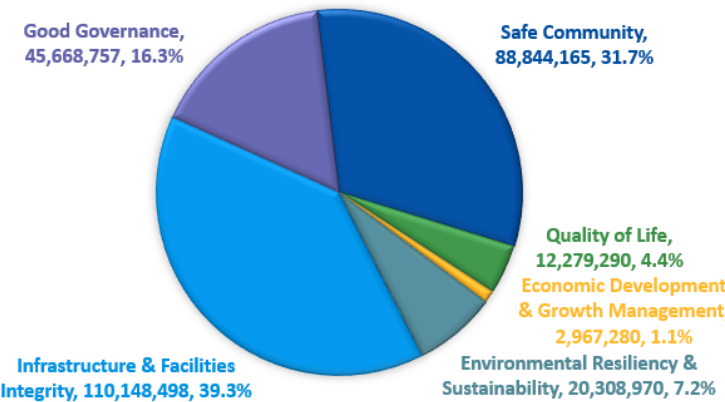
Commissioners' Strategic Pillars



The City of North Port has made a commitment to be transparent with regards to the goals that it sets and the measurement of progress towards them. Within the Strategic Vision Plan, there are 34 established Priorities and 92 Key Success Indicators.

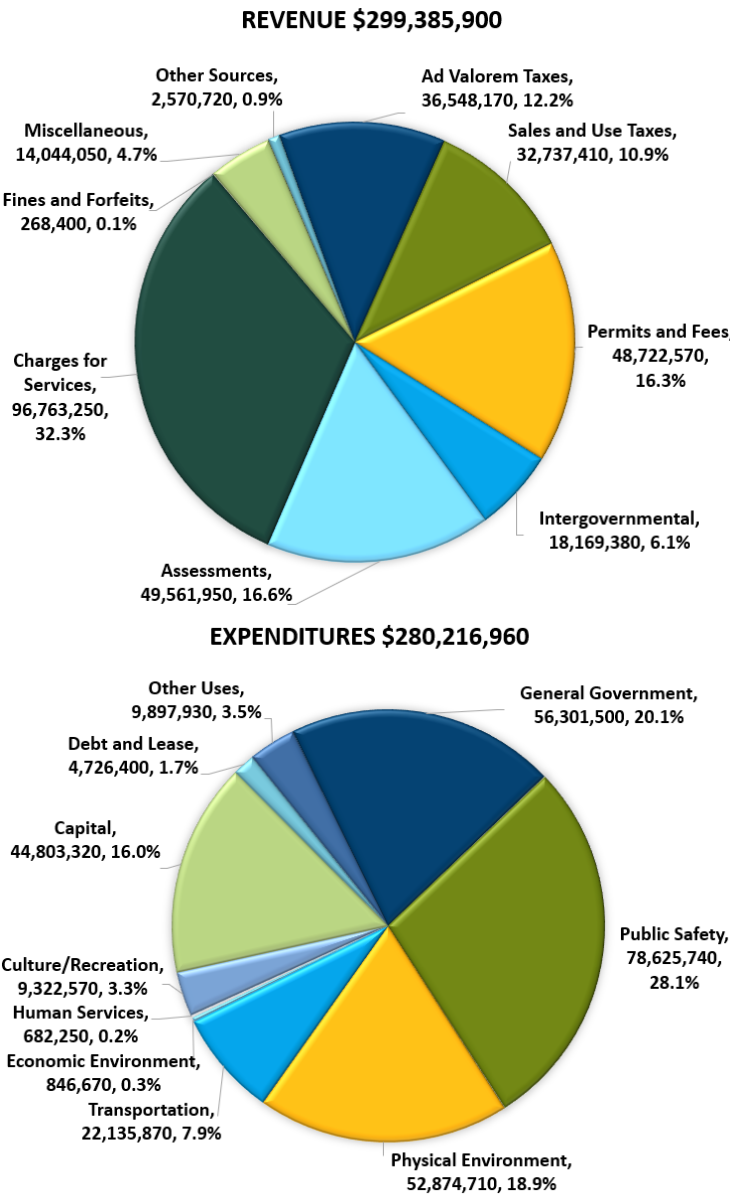
To stay informed about the status of Strategic Plan indicators and view department performance, visit [NorthPortFL.gov/Transparency](https://NorthPortFL.gov/Transparency) to access the City's performance dashboards. The data is regularly updated—monthly, quarterly, and annually—using both internal and external data sources.

FY25 Adopted Total All Funds Budget by Strategic Pillar

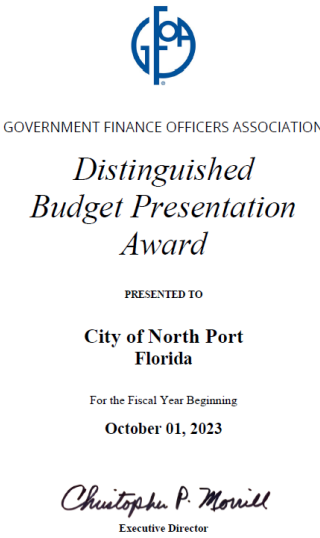


\*Total of \$280,216,960 excludes interfund transfers.

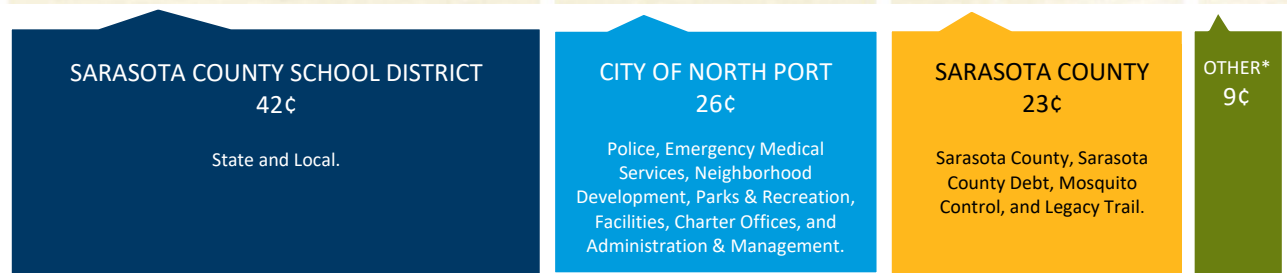
FY25 Adopted Total All Funds Revenue & Expenditures



The City of North Port has been the recipient of the Government Finance Officers Association's Distinguished Budget Presentation Award for 17 consecutive years. This award reflects the commitment of the governing body and staff to meeting the highest principles of governmental budgeting.



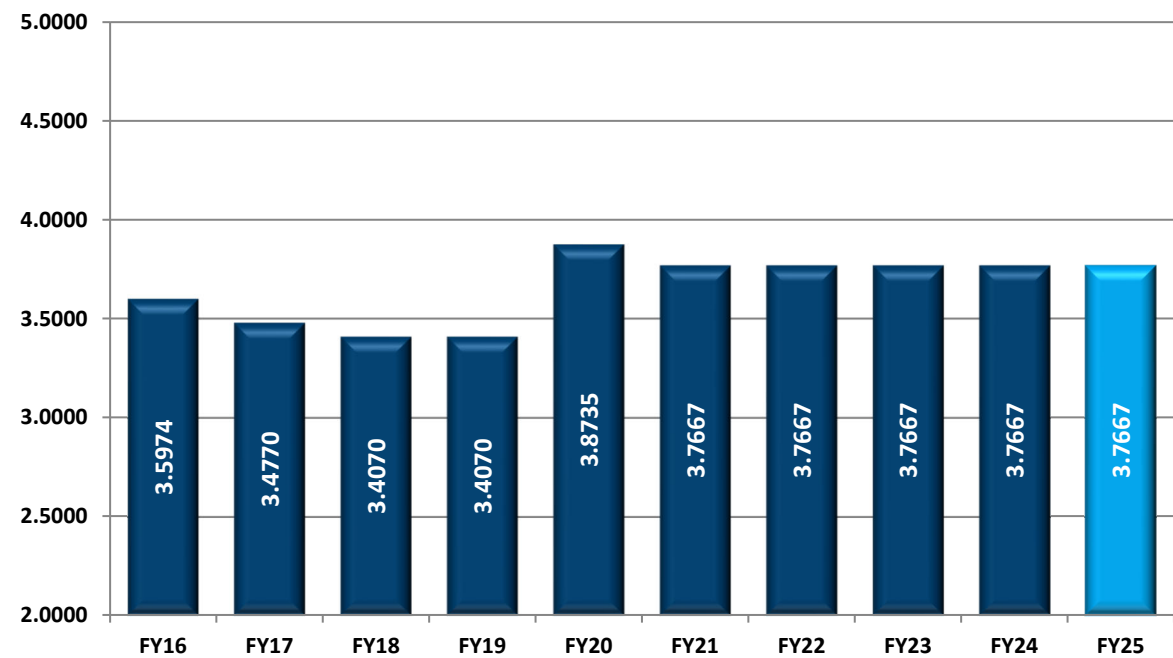
## Where Do Your Property Taxes Go?



\*OTHER includes Sarasota Memorial Hospital, Southwest Florida Water Management District, and West Coast Inland Navigation.

## Historical Ad Valorem Millage Rate

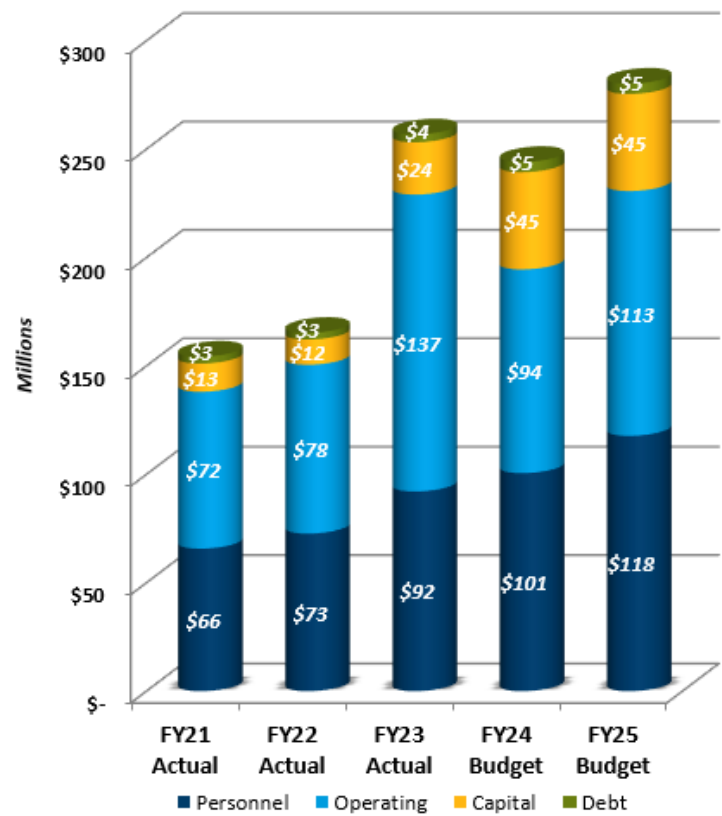
**Millage Rate** is the tax rate applied to the taxable value of real estate. One mill is equivalent to \$1 in taxes per \$1,000 in taxable value. For example, if your property has a taxable value of \$100,000, and you're assessed a 1 mill tax rate, you'll pay \$100 in taxes. To calculate your actual tax bill based on the millage rate, multiply the taxable value of your property by the millage rate, then divide by 1,000.



## All Funds Major Revenues

REVENUE	FY24 Adopted Budget	FY25 Adopted Budget	% Change
Property Taxes (City)	\$ 31,031,190	\$ 36,548,170	15.1%
Communications Services Tax	2,317,970	2,387,200	2.9%
District Assessments	43,193,380	49,561,950	12.8%
FP & L Franchise Fee	4,621,900	5,467,910	15.5%
Gas Taxes	3,784,860	3,869,370	2.2%
Half-Cent Sales Tax	9,860,200	10,411,680	5.3%
Impact Fees	13,653,680	29,283,510	53.4%
Infrastructure Sales Surtax	18,193,440	19,064,270	4.6%
State Revenue Sharing	4,216,240	4,704,890	10.4%
TOTAL	\$ 130,872,860	\$ 161,298,950	18.9%

## Actual Expenditures (FY21-FY23) & Adopted Budget (FY24-FY25)



**Personnel Services** – Expenses for salaries, wages, and benefits provided for employees by the City.

**Operating** – Expenses for ongoing costs of providing government services as well as the maintenance and operations of facilities and infrastructure.

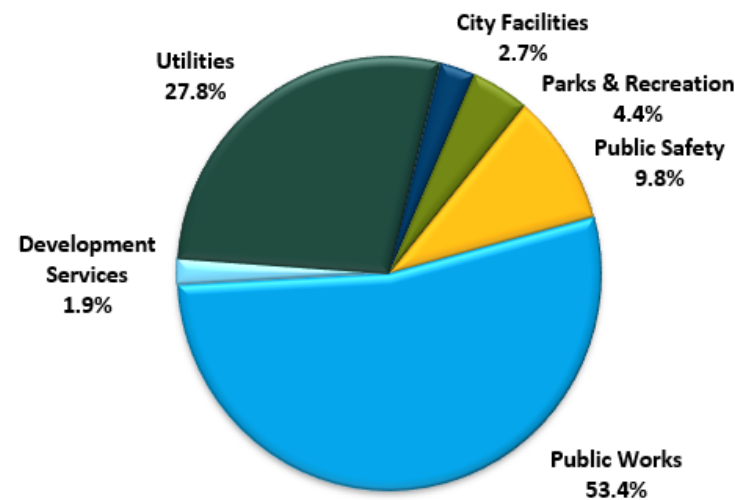
**Capital** – Purchase of land, construction of buildings, major improvements, construction of basic infrastructure, vehicles, and large equipment.

**Debt** – Funds used for the principal and interest payments on bonds, commercial paper, and other debt.

*Excludes transfers, reserves, and unbudgeted funds 154, 155, 158, 159, 651, & 652.*

## Capital Improvement Program (CIP)

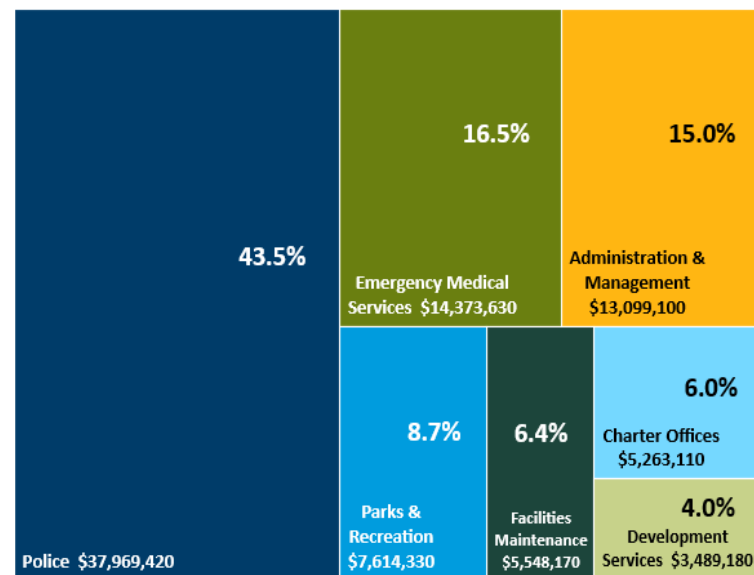
### Total FY25 All Funds Investment in Capital Improvements



### Capital Improvements by Type

City Facilities	\$ 1,055,000
Development Services	750,000
Parks & Recreation	1,730,000
Public Safety	3,805,590
Public Works	20,772,200
Utilities	10,821,060
TOTAL	\$ 38,933,850

## General Fund Expenditures by Category



City of North Port  
4970 City Hall Blvd, North Port, FL 34286  
941-429-7000 | [www.northportfl.gov](http://www.northportfl.gov)