

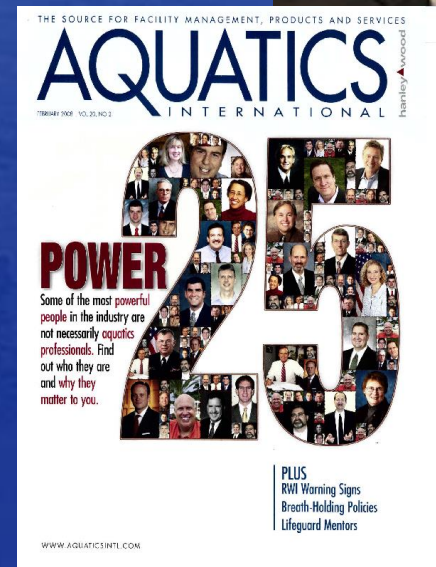


Butler Park Pool Workshop with City Commission

Wednesday, March 29, 2017

Mark C. Hatchel, PLA, ASLA

- 100+ Aquatic Design Projects Since 1980
- 35+ Years of Aquatic Design Experience
- Multiple Awards and Recognitions -
IAAPA, WWA, NSPI, and Aquatics International
- Over 100 Aquatic Projects Since 2000
- 2016 WWA AI Turner Award for Commitment to Excellence



Nationwide Aquatics Experience!



Outline

- Review Project Chronology
- Review 2012 Project Status
- Review Options to Consider
- Review 2017 Update and Project Costs
- Open Discussion with Commission



Project Chronology

October 2009 – June 2010

- North Port Aquatic Master Plan completed with public support and commission directing Staff to develop funding options for a \$5M Medium Family Aquatic Center

June 2010 – November 2010

- Commission voted to do a bond election for a \$22M Regional Water Park (Vote did not pass)

December 2010

- Commission voted to move forward with a \$4.3M 50M Pool at Butler Park

September 2011

- Commission voted to revise 50M pool to a 25M pool (Due Operational Cost Concerns)

April 2012

- Butler Park 25M Pool (\$5M Medium Family Aquatic Center) completed and permitted

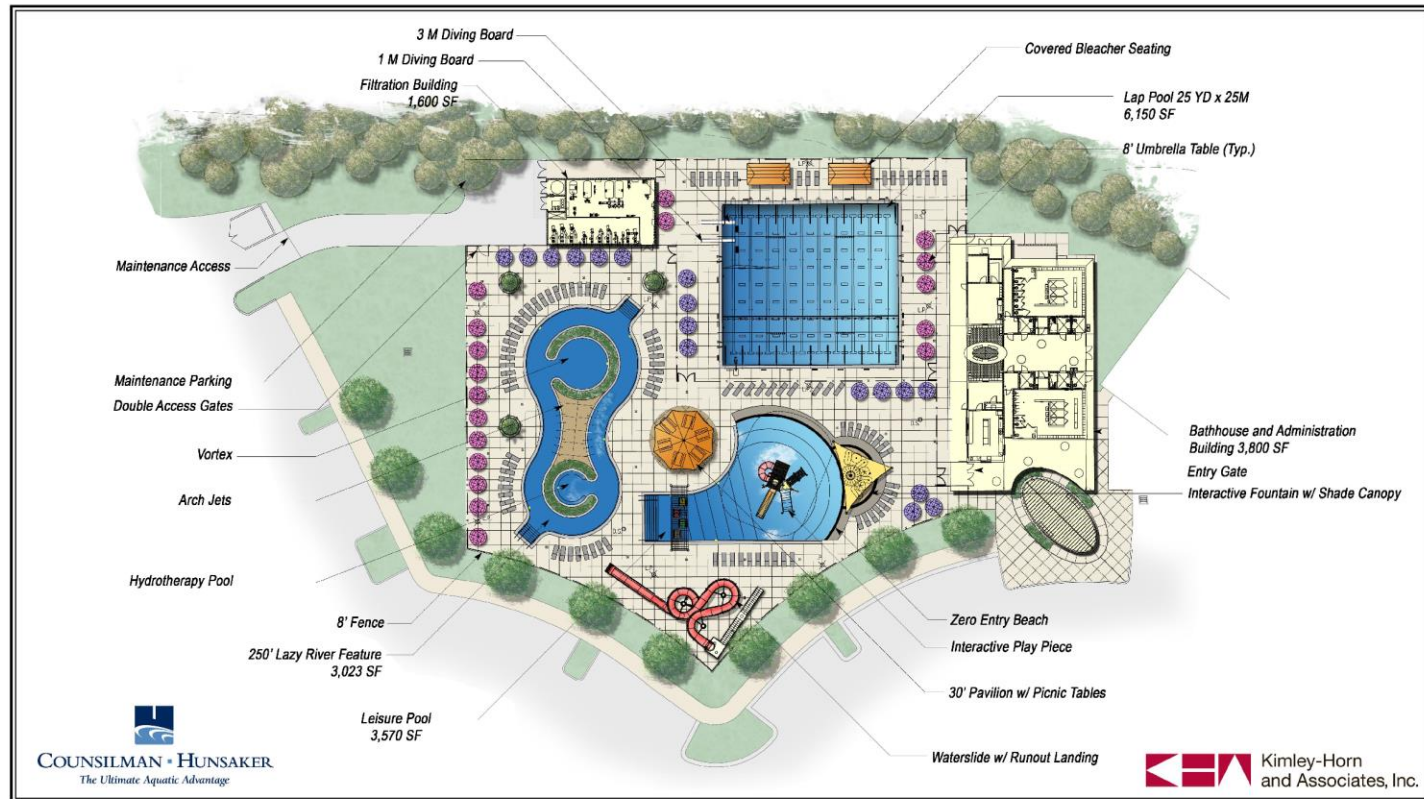
June 2012 - January 2016

- Project on hold awaiting direction and funding allocation



Butler Park Pool 2012 Project

(\$5M 25M Family Aquatic Center)



Butler Park Pool

25 M x 25 YD Pool w/ Sprayground & Leisure Pool



January 2012



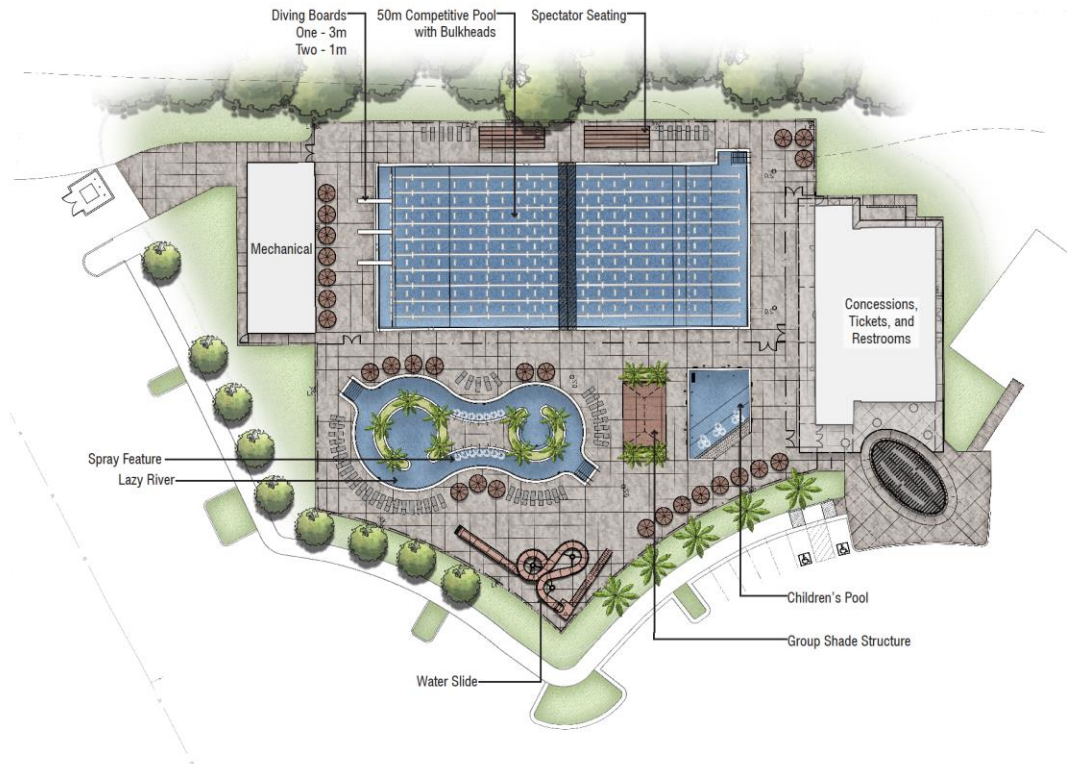
Butler Park Pool 2017 Update

(Commission Directed Options to Consider)

- **50 M Competitive Pool (Heated w/ Bulkheads)**
- **Lazy River**
- **Support Buildings**
- **Lighting, Fencing, Shade**
- **Concrete Pool Deck (Staging /Spectator Seating)**
- **Children's Pool**
- **Water Slides**
- **Spray Features**



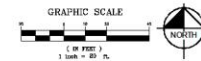
Butler Park Pool 2017 Update (\$9M 50M Family Aquatic Center)



Kimley»Horn

Butler Park 50m Pool Site Plan

Schematic Design Rendering
February 2017





Butler Park Pool Workshop with City Commission

Wednesday, March 29, 2017