



[NorthPortFL.gov](http://NorthPortFL.gov)



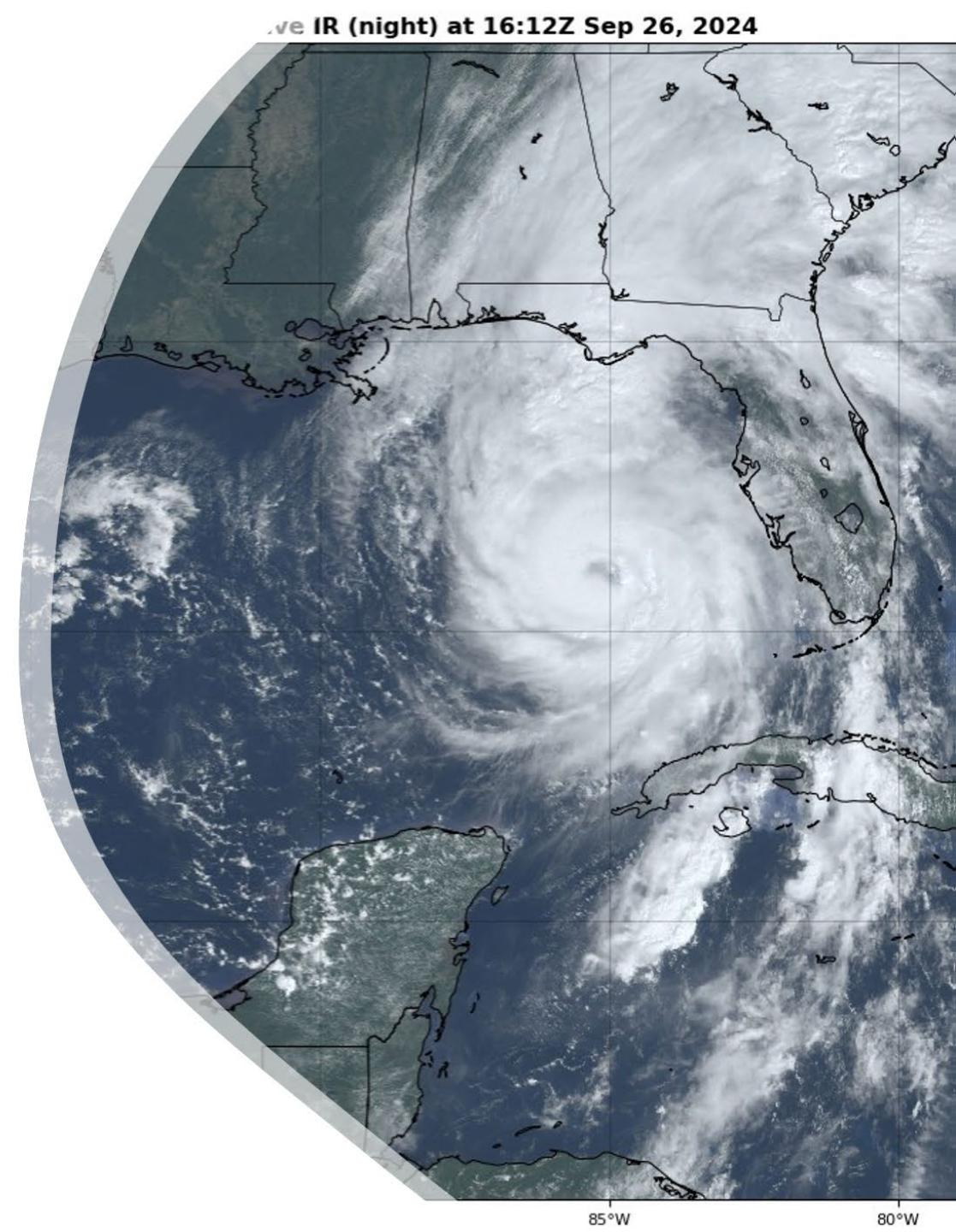
# 2025 Hurricane Outlook

North Port Emergency Management



# 2024 Hurricane Season Highlights

- Inland flooding and rainfall is a significant threat
  - Slight movement of a rain band into the big slough watershed, and North Port would have been impacted (Debby).
- A storm traveling parallel to the coastline can cause significant storm surge without landfall (Helene)
- A perpendicular storm causes forecast uncertainty – a small shift in track can drastically change impacts (Milton)
- Reinforced the need for a hardened EOC for the City
- Realistic Threat of Back-to-Back storms
  - Debris
  - Resource/preparedness measures
  - Messaging
  - Funding



# What We Improved

- Updated Emergency Personnel Policy
- Updated Plans Based on Lessons Learned
- Updated Mutual Aid Agreements and Contracts
- Hurricane Trainings and Exercises
- Increased collaboration with local, state, federal, and non-government partners
- Established Additional Department Operation Centers
- StormReady Renewal





# 2025 Predictions

## “Dynamic Hurricane Season”

| Source                                | Named Storms | Hurricanes | Major Hurricanes |
|---------------------------------------|--------------|------------|------------------|
| Average Season                        | 14           | 7          | 3                |
| 2024 Hurricane Season                 | 18           | 11         | 5                |
|                                       |              |            |                  |
| Accuweather                           | 13-18        | 7-10       | 3-5              |
| Colorado State University             | 17           | 9          | 4                |
| Sarasota Climate<br>Adaptation Center | 17           | 10         | 5                |
| National Hurricane Center             | TBD          | TBD        | TBD              |

# Increased U.S. Threat Pattern

Weak Or Absent  
Jet Stream  
Plunge



Strong,  
Expansive  
High



## 2025 Primary Contributing Factors

Sarasota Climate Adaptation Center

- Above Average Surface Temperatures
- Neutral ENSO
- Strong Bermuda High
- Lower Wind Shear
- Lower Saharan Dust

System Starts  
Farther South

# Continuing to Prepare

- Implementing Lessons Learned from Helene and Milton
- Improving Coordination Among Departments and External Partners
  - Training
  - Exercise
  - Regular Communication
- WebEOC
- Expanding Emergency Roles for City Employees
- Identifying Mitigation Strategies for Critical Infrastructure





# The Residents' Roles

- Know your Level and AlertSarasota
- North Port Evacuation Centers
  - North Port High School
  - Heron Creek Middle School
  - Atwater Elementary School
  - Woodland Middle School
- Medical Needs Program Registration
- Disaster Supply Kit (7 Days)
- Prepare Homes
- Hurricane Expo
  - May 31 from 10-2 at GMAC
- Hurricane Preparedness Seminars
  - Submit a request at [northportfl.gov/requestspeaker](http://northportfl.gov/requestspeaker)





