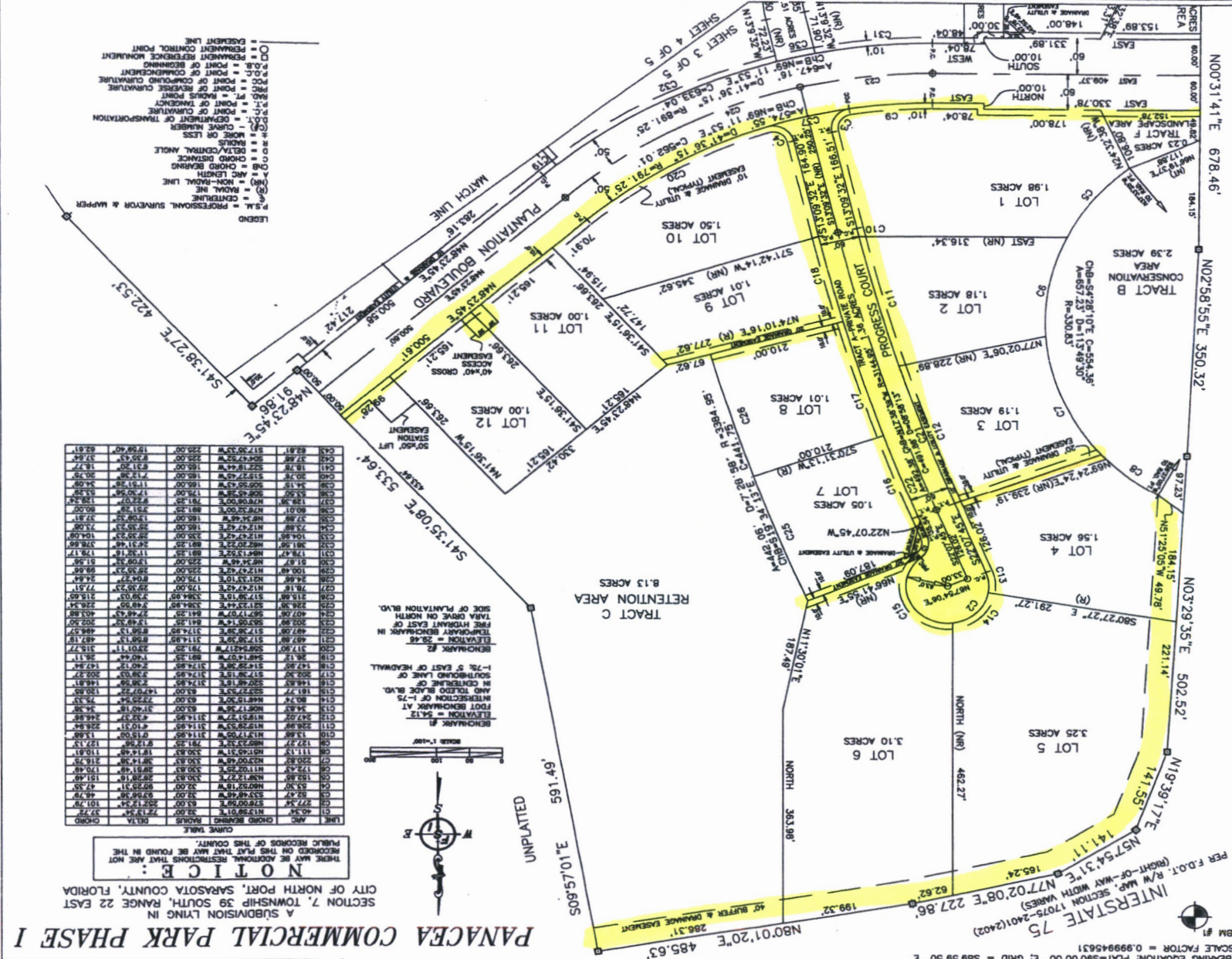


*100' easement and proposed vacation requested*

TOLEDO BLADE BOULEVARD  
 (200' RIGHT-OF-WAY WIDTH)  
 PER F.D.O.T. RESOLUTION RECORDED IN O.R. BOOK 1353, PAGE 876  
 OF SECTION 7-39-22

NOTES  
 1. BEARINGS SHOWN ARE BASED ON THE CENTER LINE OF TOLEDO BLADE BOULEVARD.  
 2. BEARING EQUATION: PLAT = 90°00'00" E; GRID = S89°59'50" E  
 SCALE FACTOR = 0.999945631  
 BM #1  
 INTERSTATE 75  
 (RIGHT-OF-WAY WIDTH VARIES)  
 SECTION 17075-2401(2402)  
 PER F.D.O.T. R/W MAP, SECTION 17075-2401(2402)  
 TO BEAR N 00°31'41"E (PER FOOT R/W MAP, SECTION 17075-2401(2402)).



LEGEND  
 P.S.M. = PROFESSIONAL SURVEYOR & MAPPER  
 (R) = CENTRAL LINE  
 (NR) = NON-RADIAL LINE  
 (N) = CHORD DISTANCE  
 (C) = CHORD BEARINGS  
 (A) = ARC LENGTH  
 (S) = MORE OR LESS  
 (L) = CURVE NUMBER  
 D.O.T. = DEPARTMENT OF TRANSPORTATION  
 P.O. = POINT OF CURVATURE  
 P.C. = POINT OF CURVATURE  
 P.T. = POINT OF TANGENCY  
 P.I. = POINT OF INTERSECTION  
 P.M. = POINT OF MILEAGE  
 P.O.C. = POINT OF COMMENCEMENT  
 P.O.B. = POINT OF BEGINNING  
 P.O.M. = PERMANENT REFERENCE MONUMENT  
 P.O.P. = PERMANENT CONTROL POINT  
 P.O.S. = POINT OF SIGHTING

LINE	ARC	CHORD BEARINGS	CHORD	DELTA	CHORD
C11	40.34	N13°50'12"E	82.00	27°19'34"	37.72
C12	27.54	S70°00'52"E	63.00	202°12'54"	101.78
C13	62.47	S33°36'48"E	132.00	89°58'58"	49.79
C14	83.90	N60°52'18"W	182.00	92°25'31"	47.35
C15	152.85	N8°12'22"E	320.82	222°18'10"	151.49
C16	172.43	N11°52'48"E	360.42	221°48'12"	175.49
C17	220.62	N20°04'04"W	461.48	221°14'58"	218.75
C18	118.13	N81°40'31"W	230.83	181°14'48"	110.61
C19	122.77	N82°52'18"W	250.83	181°14'48"	110.61
C20	122.77	N82°52'18"W	250.83	181°14'48"	110.61
C21	122.77	N82°52'18"W	250.83	181°14'48"	110.61
C22	122.77	N82°52'18"W	250.83	181°14'48"	110.61
C23	122.77	N82°52'18"W	250.83	181°14'48"	110.61
C24	122.77	N82°52'18"W	250.83	181°14'48"	110.61
C25	122.77	N82°52'18"W	250.83	181°14'48"	110.61
C26	122.77	N82°52'18"W	250.83	181°14'48"	110.61
C27	122.77	N82°52'18"W	250.83	181°14'48"	110.61
C28	122.77	N82°52'18"W	250.83	181°14'48"	110.61
C29	122.77	N82°52'18"W	250.83	181°14'48"	110.61
C30	122.77	N82°52'18"W	250.83	181°14'48"	110.61
C31	122.77	N82°52'18"W	250.83	181°14'48"	110.61
C32	122.77	N82°52'18"W	250.83	181°14'48"	110.61
C33	122.77	N82°52'18"W	250.83	181°14'48"	110.61
C34	122.77	N82°52'18"W	250.83	181°14'48"	110.61
C35	122.77	N82°52'18"W	250.83	181°14'48"	110.61
C36	122.77	N82°52'18"W	250.83	181°14'48"	110.61
C37	122.77	N82°52'18"W	250.83	181°14'48"	110.61
C38	122.77	N82°52'18"W	250.83	181°14'48"	110.61
C39	122.77	N82°52'18"W	250.83	181°14'48"	110.61
C40	122.77	N82°52'18"W	250.83	181°14'48"	110.61
C41	122.77	N82°52'18"W	250.83	181°14'48"	110.61
C42	122.77	N82°52'18"W	250.83	181°14'48"	110.61
C43	122.77	N82°52'18"W	250.83	181°14'48"	110.61
C44	122.77	N82°52'18"W	250.83	181°14'48"	110.61
C45	122.77	N82°52'18"W	250.83	181°14'48"	110.61
C46	122.77	N82°52'18"W	250.83	181°14'48"	110.61
C47	122.77	N82°52'18"W	250.83	181°14'48"	110.61
C48	122.77	N82°52'18"W	250.83	181°14'48"	110.61
C49	122.77	N82°52'18"W	250.83	181°14'48"	110.61
C50	122.77	N82°52'18"W	250.83	181°14'48"	110.61
C51	122.77	N82°52'18"W	250.83	181°14'48"	110.61
C52	122.77	N82°52'18"W	250.83	181°14'48"	110.61
C53	122.77	N82°52'18"W	250.83	181°14'48"	110.61
C54	122.77	N82°52'18"W	250.83	181°14'48"	110.61
C55	122.77	N82°52'18"W	250.83	181°14'48"	110.61
C56	122.77	N82°52'18"W	250.83	181°14'48"	110.61
C57	122.77	N82°52'18"W	250.83	181°14'48"	110.61
C58	122.77	N82°52'18"W	250.83	181°14'48"	110.61
C59	122.77	N82°52'18"W	250.83	181°14'48"	110.61
C60	122.77	N82°52'18"W	250.83	181°14'48"	110.61
C61	122.77	N82°52'18"W	250.83	181°14'48"	110.61
C62	122.77	N82°52'18"W	250.83	181°14'48"	110.61
C63	122.77	N82°52'18"W	250.83	181°14'48"	110.61
C64	122.77	N82°52'18"W	250.83	181°14'48"	110.61
C65	122.77	N82°52'18"W	250.83	181°14'48"	110.61
C66	122.77	N82°52'18"W	250.83	181°14'48"	110.61
C67	122.77	N82°52'18"W	250.83	181°14'48"	110.61
C68	122.77	N82°52'18"W	250.83	181°14'48"	110.61
C69	122.77	N82°52'18"W	250.83	181°14'48"	110.61
C70	122.77	N82°52'18"W	250.83	181°14'48"	110.61
C71	122.77	N82°52'18"W	250.83	181°14'48"	110.61
C72	122.77	N82°52'18"W	250.83	181°14'48"	110.61
C73	122.77	N82°52'18"W	250.83	181°14'48"	110.61
C74	122.77	N82°52'18"W	250.83	181°14'48"	110.61
C75	122.77	N82°52'18"W	250.83	181°14'48"	110.61
C76	122.77	N82°52'18"W	250.83	181°14'48"	110.61
C77	122.77	N82°52'18"W	250.83	181°14'48"	110.61
C78	122.77	N82°52'18"W	250.83	181°14'48"	110.61
C79	122.77	N82°52'18"W	250.83	181°14'48"	110.61
C80	122.77	N82°52'18"W	250.83	181°14'48"	110.61
C81	122.77	N82°52'18"W	250.83	181°14'48"	110.61
C82	122.77	N82°52'18"W	250.83	181°14'48"	110.61
C83	122.77	N82°52'18"W	250.83	181°14'48"	110.61
C84	122.77	N82°52'18"W	250.83	181°14'48"	110.61
C85	122.77	N82°52'18"W	250.83	181°14'48"	110.61
C86	122.77	N82°52'18"W	250.83	181°14'48"	110.61
C87	122.77	N82°52'18"W	250.83	181°14'48"	110.61
C88	122.77	N82°52'18"W	250.83	181°14'48"	110.61
C89	122.77	N82°52'18"W	250.83	181°14'48"	110.61
C90	122.77	N82°52'18"W	250.83	181°14'48"	110.61
C91	122.77	N82°52'18"W	250.83	181°14'48"	110.61
C92	122.77	N82°52'18"W	250.83	181°14'48"	110.61
C93	122.77	N82°52'18"W	250.83	181°14'48"	110.61
C94	122.77	N82°52'18"W	250.83	181°14'48"	110.61
C95	122.77	N82°52'18"W	250.83	181°14'48"	110.61
C96	122.77	N82°52'18"W	250.83	181°14'48"	110.61
C97	122.77	N82°52'18"W	250.83	181°14'48"	110.61
C98	122.77	N82°52'18"W	250.83	181°14'48"	110.61
C99	122.77	N82°52'18"W	250.83	181°14'48"	110.61
C100	122.77	N82°52'18"W	250.83	181°14'48"	110.61

PLAT BOOK 44 PAGE 16B  
 PANACEA COMMERCIAL PARK PHASE I  
 A SUBDIVISION LYING IN  
 SECTION 7, TOWNSHIP 29 SOUTH, RANGE 22 EAST  
 CITY OF NORTH PORT, SARASOTA COUNTY, FLORIDA  
 NOTICE:  
 THERE MAY BE ADDITIONAL RESTRICTIONS THAT ARE NOT  
 RECORDED ON THIS PLAT THAT MAY BE FOUND IN THE  
 PUBLIC RECORDS OF THIS COUNTY.  
 CORNER MARK