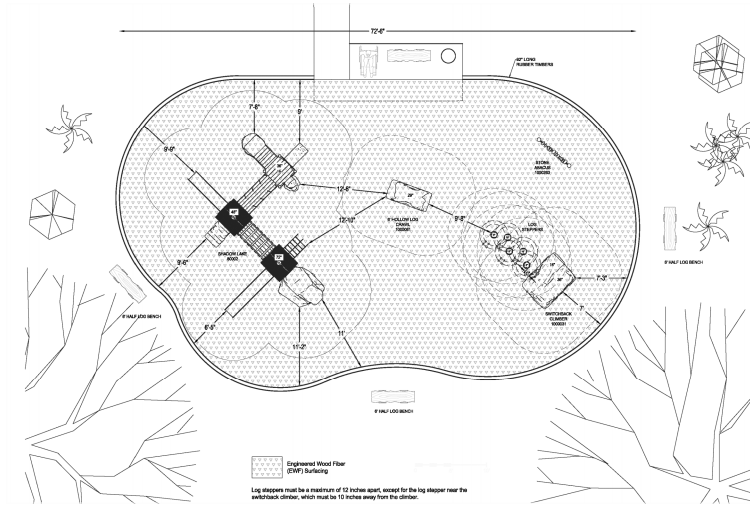




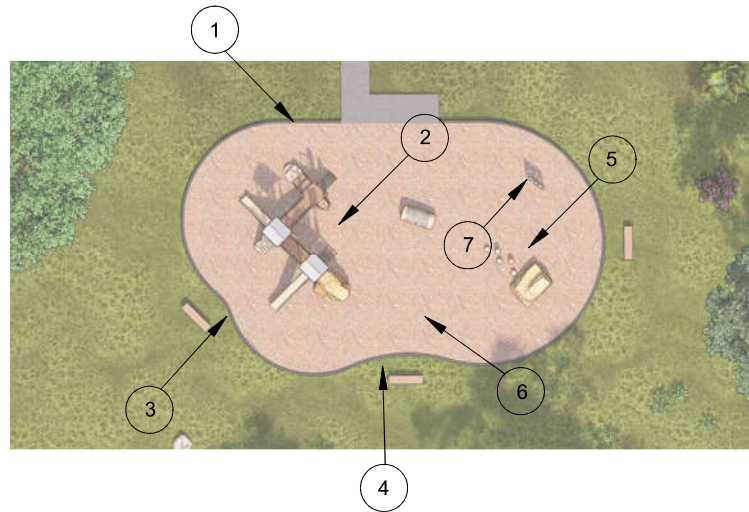
PICTURE 1



PICTURE 2



PICTURE 3



PLAYGROUND EQUIPMENT

PLAYGROUND EQUIPMENT SHOWN FROM CREPLAY. PLAYGROUND EQUIPMENT TO BE SUPPLIED BY THE CITY OF NORTH PORT. THE PLAYGROUND CONTRACTOR IS GOING TO INSTALL ALL THE PLAYGROUND EQUIPMENT, BORDER AND MULCH. THE PLAYGROUND CONTRACTOR IS TO COORDINATE WITH THE GENERAL CONTRACTOR FOR THE PROJECT.

SEE SHEET 14 FOR PICTURE 7 AND PLAYGROUND TIMBERS DETAIL.



PICTURE 4



PICTURE 5



PICTURE 6

DATE	REVISION	BY



DMK ASSOCIATES
ENGINEERS SURVEYORS
405 Commercial Court, Suite E Venice, Florida 34292
Phone: (941) 412-1293, email: info@dmkassoc.com
Certificate of Authorization No. 3943

DATE	08/28/23	CKD BY	DATE
DRAWN	RMS/WA	JRR	01/23/25
DESIGN	RMS	JRR	01/23/25
SCALE	@ 24"x36"	DMK NO.	24-0038

CITY OF NORTH PORT - PUBLIC WORKS DIVISION

BOCA CHICA PARK
PLAYGROUND DETAILS (1)

ENGINEER OF RECORD
JEFFREY R. RAYSON, P.E.
STATE OF FLORIDA NO. 88349

SHEET NO.

13