



d/b/a The Environmental Conservancy of North Port And Surrounding Areas



# WHO are we / WHAT do we do / Where ?

We are a **501c3 non-profit** entity focused on **acquiring and conserving undeveloped natural land parcels in neighborhoods of North Port and its Surrounding Areas** (Sarasota and Charlotte Counties) **to provide a greenspace balance between where nature has lived for decades and where we live today as our population continues to grow at a rapid pace.**

**WE SAVE NEIGHBORHOOD LAND TO PROTECT THEIR HOMES**  
**Our Local Native Tree Canopy - Live Oak - Sabal Palm - Slash Pine**







**WE SAVE NEIGHBORHOOD  
LAND TO PROTECT THEIR  
HOMES**





**WE SAVE NEIGHBORHOOD  
LAND TO PROTECT THEIR  
HOMES**



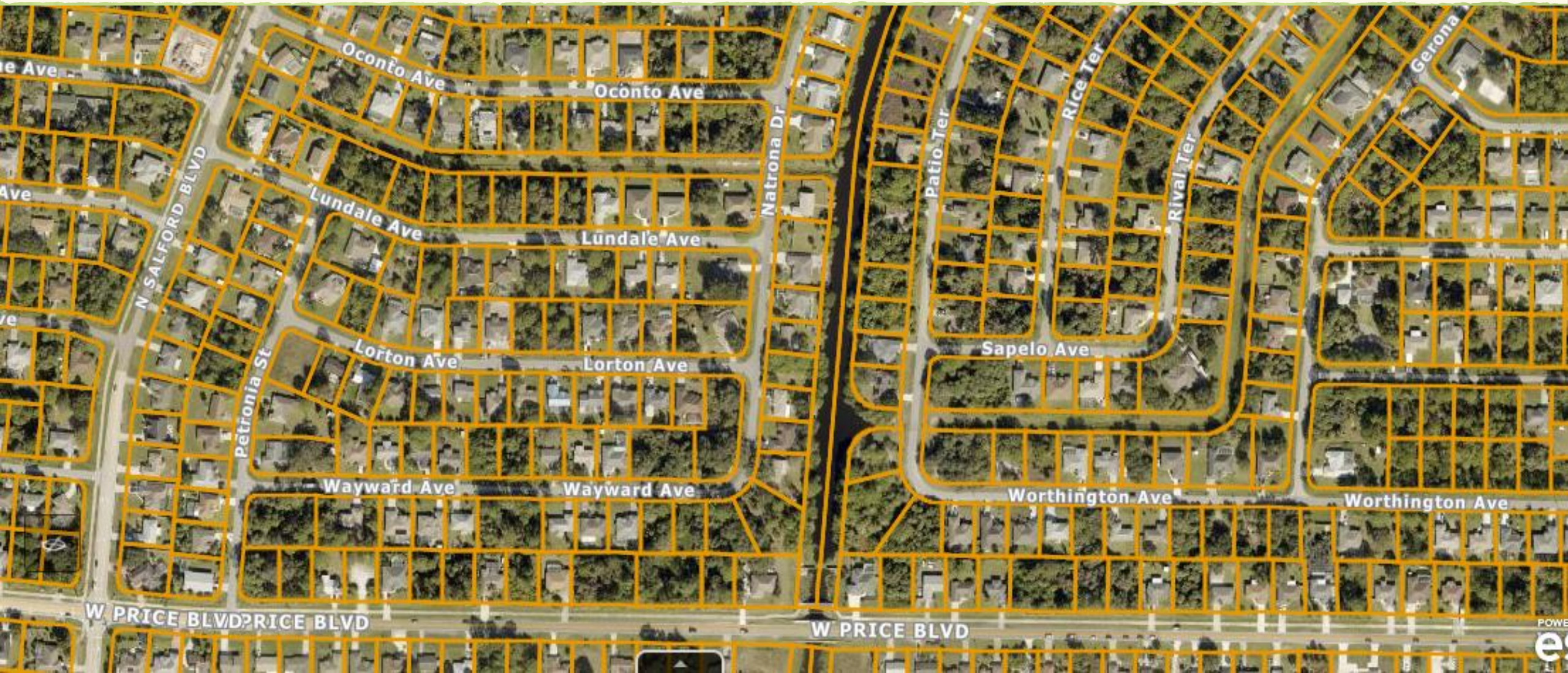
# BUT, WHY DO THIS?

There are LOTS of Woods in Many of Our Area Neighborhoods!



BECAUSE THIS IDEA IS FALSE!

The "Woods" In Our Neighborhoods Are Just An Illusion





Each Lot On Every Block Is Individually Owned And Subject To Clear-Cutting For Development



One Parcel At A Time  
Our Native Tree Canopy/Flora Are Being Removed/Erased  
with Little to None Being Planted Back



# As A Result, Our Wildlife is Slowly Being Displaced

(Photo Credit: Millie Hubbard)



# As Homes Take The Place of the Natural Environment, Where Will Our Wildlife Go?



# Without Continued Neighborhood Conservation Efforts Development Will Eventually Completely Erase Our Natural Landscape

(Photo Credit: Keith Brown)



Lot 1 – North Port  
Acquired September 2020 by purchase for \$5,000 from Sarasota  
County Surplus Auction  
(multiple donors) - ¼ acre



Lot 1  
Close Ups



Lot 2 – North Port  
Acquired September 2020 by purchase for \$5,000 from  
Sarasota County Surplus Auction  
(multiple donors) ¼ acre





# Lot 2 Close Ups



Lot 3 – North Port  
Acquired Via Owner Donation in November 2020  
1/4 acre

(Previously Cleared by Prior Owner - Replanting for Restoration In Process)



Lot 3  
A Matching Grant from CHNEP Allowed Us to Complete Phase I of Our  
Restoration Planting Of Scrub Oaks (7) and Neighborhood Native  
Plants (33)



## Lot 3 – Close Ups

Many native plants that have re-seeded themselves over time despite the clearing.



Lot 4 – North Port  
Acquired Via Owner Donation (Dick & Isabella Copenhaver)  
in July 2021 - ¼ acre



# Lot 4 Close-Ups

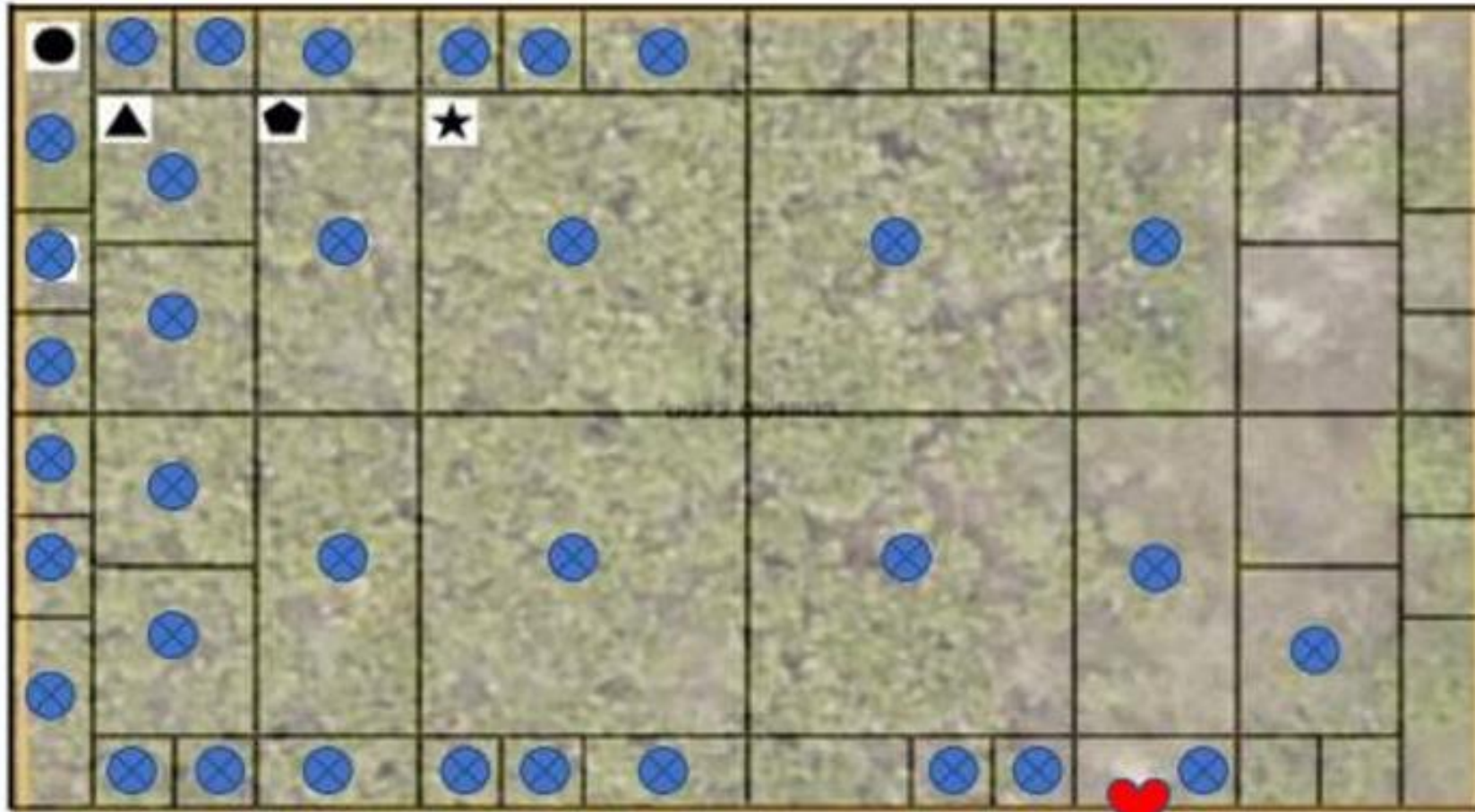


## Lot 5 – North Port

Acquired October 2021 by purchase for \$5,000 (multiple donors via “Bingo Card-style” fundraiser) ¼ acre



Once We Fill The Card With Donations, We'll Make The Purchase And Local Nature Wins!



- ★ \$500: Largest center square
- ◆ \$250: Largest center rectangle
- ▲ \$100: Medium square
- \$50: Smallest outer rectangle
- ◆ \$25: Smallest outer square

Gopher Tortoise Burrow



# Lot 5 Close Ups



## Lot 6 – North Port

Acquired October 2021 by purchase with a single \$5,000 donation  
(Venice resident donor wishes to remain anonymous) 1/4 acre



Lot 6  
Close Ups



# Lots 7 and 8 (Double Lot Acquisition) – North Port

(Acquired January 2022 by purchase for \$9,000 each with a combination of donated funds received on Giving Tuesday November 2021, in our Online Auction Fundraiser in December 2021 and a \$5,000 donation from a Venice resident donor who wishes to remain anonymous) - 1/2 acre



# Lots 7 and 8 Close Ups



Lots 7 and 8  
Closeups *Cont'd*



# Lots 7 and 8 TRAIL CAM





● 🌡️ 32 °C 89 °F 2022/03/15 13:54:04 0258



Say Hello to Morla, she and her burrow are protected on one of our land parcels



# Lot 9 – North Port

(Acquired January 2022 by purchase for \$9,000 with donated funds received via a Go Fund Me Campaign from a single donor) - 1/4 acre



Lot 9  
Close Up



# Lot 10 – North Port

(Acquired February 2022 by purchase for \$7,500, funded with a \$5,000 donation and a \$2,000 donation from two different individual donors who wish to remain anonymous, and \$500 in funds we had on hand from previous donations) ¼ acre



# Lot 10 Close Ups



Lot 10  
TRAIL  
CAM



# PENDING ACQUISITIONS IN SURROUNDING AREAS



- A parcel in Port Charlotte by donation.
- A parcel in Harbour Heights by donation.
- Two 3-parcel sets in Harbour Heights via Charlotte County Surplus Sale Auction Bidding and Fundraising.

# In Conclusion



- Many neighborhoods of Sarasota/Charlotte Counties and surrounding areas contain undeveloped land parcels that act as habitat (or homes) to our diverse population of wildlife, native plants and trees.
- More than 1,000 people are now moving to Florida every day and hundreds to thousands of acres of land are being completely clear-cut both locally and Statewide to accommodate our growing population daily; this threatens the very being and future longevity of our wildlife and our natural environment at the same time.
- By conserving neighborhood land we are providing protected places for nature to remain where it has existed for decades amidst where we live today as our population continues to grow.



# THE TAKEAWAY: WE SHOULD, AND WE CAN COEXIST!

Without conservation land to create a balance between development and our natural environment as our neighborhoods continue to develop, it will be impossible to maintain the biodiversity that is necessary for the long term survival of our native flora and fauna.



Conservation of undeveloped land parcels (greenspace) in our neighborhoods preserves wildlife habitat, maintains scenic landscape for people; helps reduce flooding; helps filter water/improve water quality; maintains the native tree canopy and vegetation that serve as filters for our air; and increases property values.

# Thank You For Your Time!

The Environmental Conservancy of  
North Port And Surrounding Areas

3465 Alfred Road, North Port, FL  
34286

941-218-9775

[NPconservancy@gmail.com](mailto:NPconservancy@gmail.com)

[www.facebook.com/ecnorthport](http://www.facebook.com/ecnorthport)

Instagram: NPconservancy

[www.ecnorthport.com](http://www.ecnorthport.com)

Tax ID Number 84-4132468

*"In the end we will  
conserve only what we  
love; we will love only  
what we understand;  
and we will understand  
only what we are  
taught."*

*(Baba Dioum, 1968.)*