



CITY OF NORTH PORT FUTURE GROWTH & SCHOOL CAPACITY



Nearmap

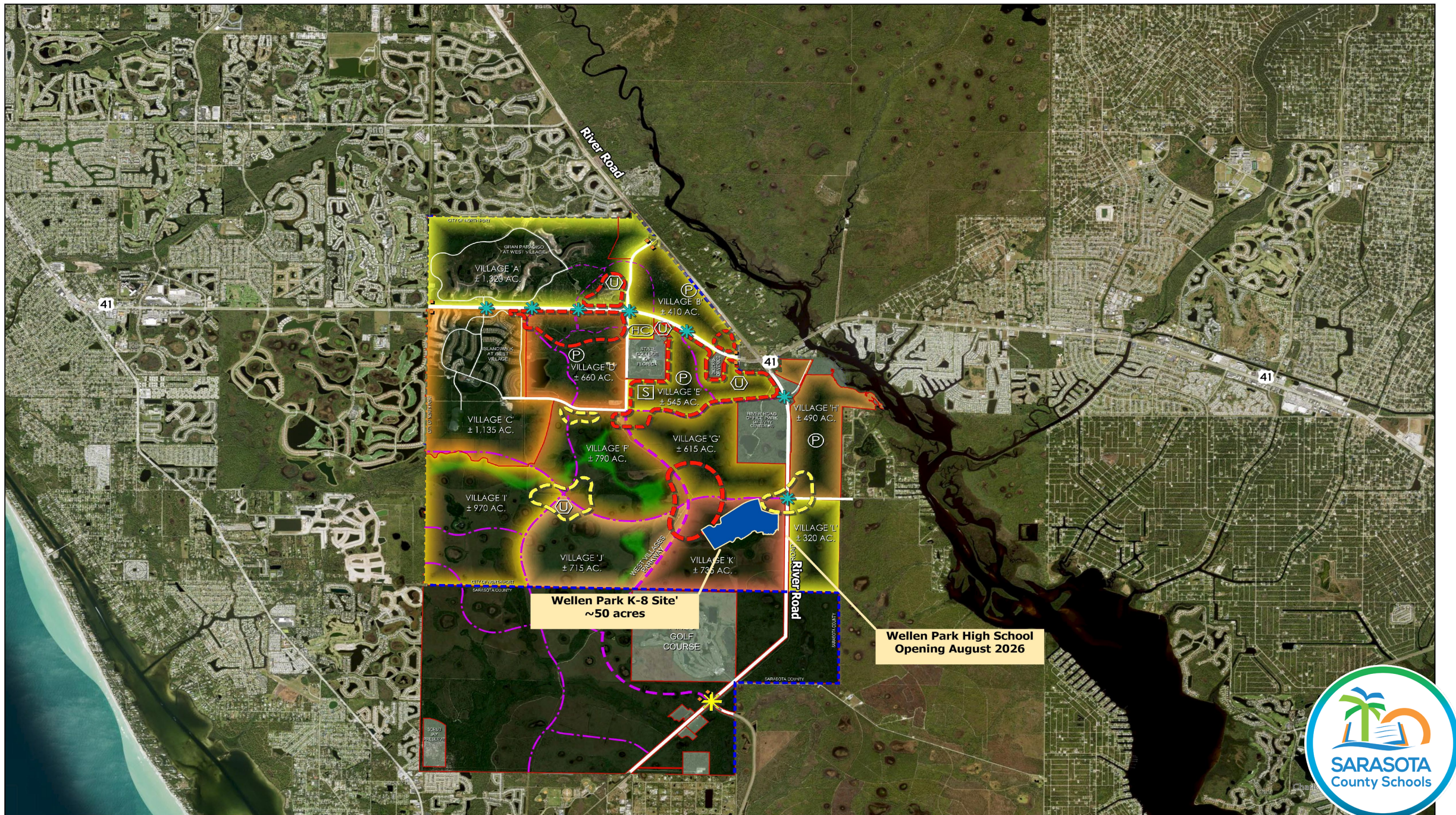
Wellen Park Development

- Approved for 22,500 total units
- 7,428 dwelling units built since 2005
- ~ 11,000 – 15,000 dwelling units remaining

Impact:

~ 11,000 – 15,000 dwelling units = ~2,400 – ~ 3,300 students





South County School Capacity

School	Capacity	24/25 Enrollment	Available Capacity
Englewood Elementary	698	564	134
Taylor Ranch Elementary	781	846	-65
Venice Middle	1,024	733	291
Venice High	2,156	2,588	-432



North Port Developments

Major Developments

- Woodlands DRI
- Central Parc
- Toledo Preserve
- Village of Star Farms
- The Shire

Impact:

1-10 years = ~ 2,900 dwelling units = ~ 128 students

10-20 years = ~10,400 dwelling units = ~ 1,450 students

Vacant Platted Lots = ~37,855 = ~8,300 students



+/- 37,855 Vacant
Residential Platted Lots

Woodlands Elementary Site
~47 Acres

Woodlands HS Site
~104 Acres

Largo Preserve Middle School Site
~51 Acres

Haberland Elementary Site
~21 Acres



North Port School Capacity

School	Capacity	24/25 Enrollment	Available Capacity
Atwater Elementary	1,028	922	106
Cranberry Elementary	761	814	-53
Glenallen Elementary	930	753	177
Lamarque Elementary	1,069	1,031	38
Toledo Blade Elementary	853	843	10
Heron Creek Middle	1,577	950	627
Woodland Middle	1,442	1,041	401
North Port High	2,784	2,560	224



Capital Improvement Planning

Yearly Evaluation Includes:

- Monitoring high growth areas
- DOE enrollment projections and available capacity
- Identify projects for next 5 years and funding sources
- Determine timing of new school facilities.



Future North Port Projects

Upcoming Capital Improvement Projects:

- North Port High School HVAC & Science Wing Refresh

Exploring Capacity Projects/Strategies:

- New Elementary School in Woodlands
- New High School in Woodlands
- New Classroom Wing Additions



Capital Challenges

Projects & Funding :

- Managing Growth!
- SREF Building Requirements
- Cost PSF vs. Cost PSS
- Pandemic -Cost doubled. 2X to do 1/2 !!!!
--NEVER ended for Capital Projects!
- No Capital Funding Relief to Date
- Debt Service – Monitor/Minimize

Priority Shifts:

- Strategic Priorities/Strategic Abandonment
- LEGISLATIVE - Collective Effort



