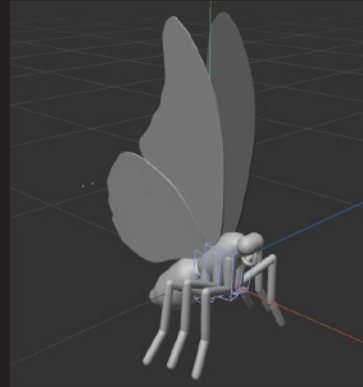
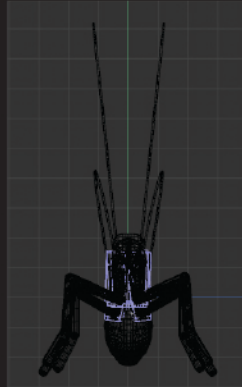
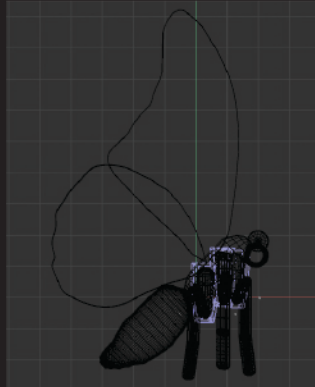




DESIGN & BUILD DOCUMENTATION



Butterfly | Stage 1

34.93cm/13.75" L
28.96cm/11.40" W
59.49cm/23.42" H

Stage 1 Cost
\$150 - \$225

Materials
Smooth-On Onyx Slow
Smooth-On Crystal Clear 204

The Butterfly that sits atop the statue will be created using several contemporary and traditional art making processes, including molding & casting, CAD modeling, 3D printing, and sublimation printing. All processes will be using fully synthetic materials.

The finished Butterfly head, thorax, abdomen, and legs will be comprised of Smooth-On Onyx Slow. The wings will be a composite of Smooth-On Onyx Slow, Smooth-On Crystal Clear 204 and sublimation ink.

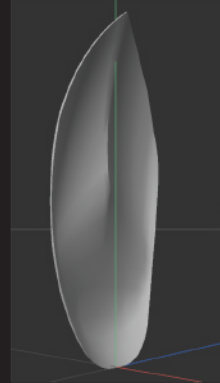
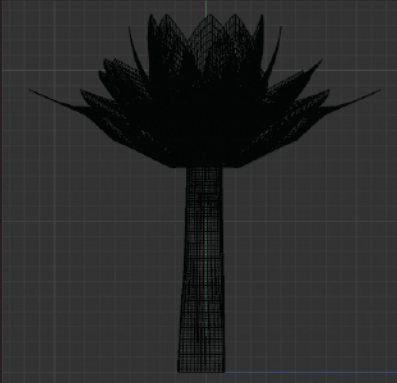
A piece of art will adorn the wings of the butterfly.

***All processes & work experimental. Designs, applications and schema subject to change.**

MEMORIAL STATUE



DESIGN & BUILD DOCUMENTATION



Lotus | Stage 2

Log 35.56cm/14" L
35.56cm/14" W
121.92cm/48"H

Stage 2 Cost
\$1450 - \$1950

Species

Eastern Red Cedar

Collected locally after Hurricane Ian by Mike Halligan

Selected and purchased by Halligan & McCauley

Lotus 36.83cm/14.5" L

Petals 16.51cm/6.5" W
1.27cm/0.5"H

Materials

Smooth-On Smooth-Cast 320

Smooth-On Crystal Clear 204

Smooth-On So-Strong Colorants

Strength

Shore Hardness 80D

Tensile Strength 3,500PSI

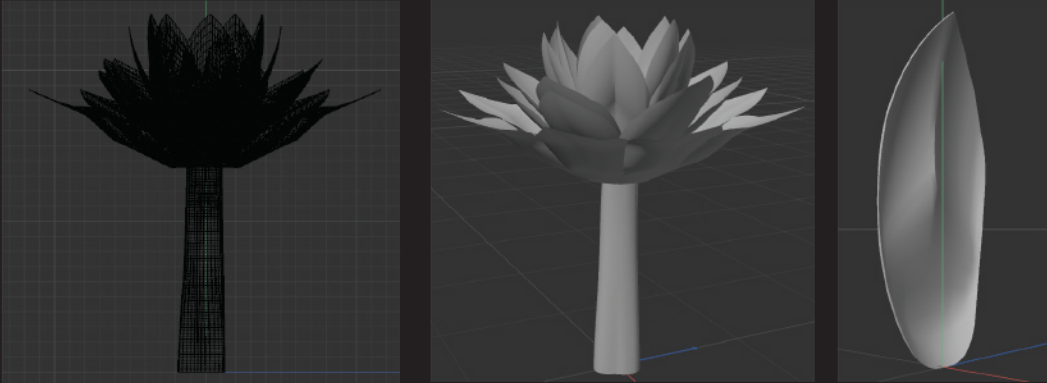
The Lotus that sits in the middle of the statue will be created using several contemporary and traditional art making processes, including molding & casting, CAD modeling, 3D printing, and encapsulation. All processes will be using natural & synthetic materials.

***All processes & work experimental. Designs, applications and schema subject to change.**

©Synthetic Ghost Inc | Don McCauley



DESIGN & BUILD DOCUMENTATION



Lotus | Stage 2

The finished Lotus stem is a 48" log of Eastern Red Cedar that is laquered. The Lotus petals will be a composite of Smooth-On Smooth-Cast 320, Smooth-On Crystal Clear 204, and Smooth-On So-Strong Colorants.

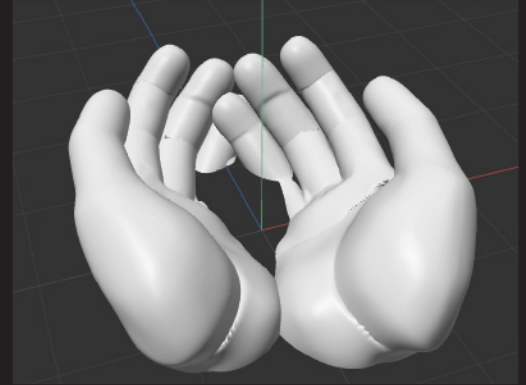
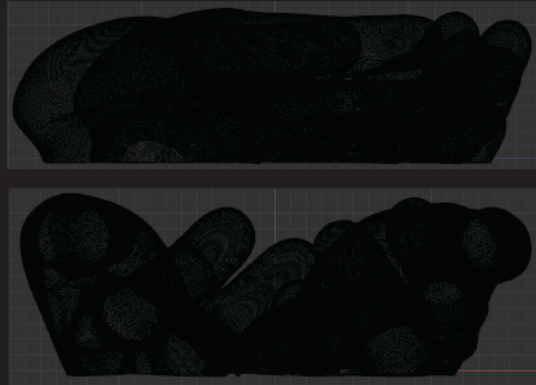
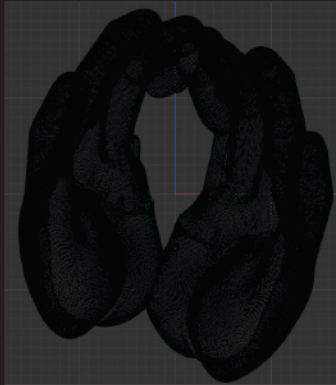
***All processes & work experimental. Designs, applications and schema subject to change.**

©Synthetic Ghost Ind | Don McCauley

MEMORIAL STATUE



DESIGN & BUILD DOCUMENTATION



Hands | Stage 3

Hands	195.22cm/76.85" L 164.21cm/64.64" W 58.59cm/23" H
-------	---

Stage 3 Cost \$1350-1500

Materials Overture PLA Smooth-On Duo Matrix Neo Smooth-On Matrix Chopped Glass Smooth-On Bronze Metal Powder Cement
--

Strength Tensile Strength 3,300 - 5,500 PSI
--

The Hands that sits at the base of the statue will be created using several contemporary and traditional art making processes, including CAD modeling, 3D printing, and cold-casting. All processes will be using natural and synthetic composite materials.

The finished Hands will be a composite of Overture PLA, Smooth-On Duo Matrix Neo, Smooth-On Matrix Chopped Glass, Smooth-On Bronze Metal Powder, and cement. The core of the Hands will be cement, which will be filled after delivery. Cement will encapsulate rebar ground supports.

***All processes & work experimental. Designs, applications and schema subject to change.**