



12800 UNIVERSITY DRIVE, SUITE 175
 FORT MYERS, FLORIDA 33907
 PHONE: (239) 597-0575 FAX: (239) 597-0578
 FLORIDA CERTIFICATE OF AUTHORIZATION # LB-6952
 PREPARED BY
 MICHAEL A. WARD, PLS LS 5301

WELLEN PARK GOLF AND COUNTRY CLUB, PHASE 1C

A REPLAT OF TRACT 504 AND A PORTION OF TRACTS GC08, GC09, 503, 505, 712 AND 900 WELLEN PARK GOLF AND COUNTRY CLUB, PHASE 1A A SUBDIVISION, RECORDED IN PLAT BOOK 56 PAGES 75-159 SECTION 8, TOWNSHIP 40 SOUTH, RANGE 20 EAST, CITY OF NORTH PORT, SARASOTA COUNTY, FLORIDA

NOTICE

THIS PLAT, AS RECORDED IN ITS GRAPHIC FORM, IS THE OFFICIAL DEPICTION OF THE SUBDIVIDED LANDS DESCRIBED HEREIN AND WILL IN NO CIRCUMSTANCES BE SUPPLANTED IN AUTHORITY BY ANY OTHER GRAPHIC OR DIGITAL FORM OF THE PLAT. THERE MAY BE ADDITIONAL RESTRICTIONS THAT ARE NOT RECORDED ON THIS PLAT THAT MAY BE FOUND IN THE PUBLIC RECORDS OF THIS COUNTY.

- 1) THE DECLARATION OF COVENANTS, CONDITIONS, EASEMENTS AND RESTRICTIONS FOR WELLEN PARK GOLF AND COUNTRY CLUB, (THE "DECLARATION") IS RECORDED WITH THIS PLAT IN THE OFFICIAL RECORDS AS INSTRUMENT NUMBER 2022054676, PUBLIC RECORDS OF SARASOTA COUNTY, FLORIDA.
- 2) OWNER RETAINS AND RESERVES OWNERSHIP OF ALL PROPERTY, EASEMENTS AND INTERESTS SET FORTH ON THIS PLAT THAT HAVE NOT OTHERWISE BEEN CONVEYED AND/OR DEDICATED TO ANOTHER PARTY.
- 3) THE SITE LIES WITHIN THE BOUNDARY OF FLOOD ZONE "X" PER FEMA FIRM MAP PANEL 12115 C 0365 F.

TRACT DESIGNATIONS

TRACT 101: PRIVATE ROAD RIGHT OF WAY, PRIVATE IRRIGATION, ACCESS, DRAINAGE AND PUBLIC UTILITY EASEMENT TRACT.
 TRACTS 503A, 504, AND 505A: DRAINAGE AND STORM WATER MANAGEMENT, ACCESS, DRAINAGE, PRIVATE IRRIGATION AND PUBLIC UTILITY EASEMENT TRACT.
 TRACTS 611, 612, AND 613 COMMON AREA, ACCESS, DRAINAGE AND PUBLIC UTILITY EASEMENT TRACTS
 TRACT 712A: CONSERVATION AREA TRACT.
 TRACT 901: FUTURE DEVELOPMENT, ACCESS, DRAINAGE, PRIVATE IRRIGATION AND PUBLIC UTILITY EASEMENT TRACT OVER THE AREAS SHOWN AND DEDICATED IN CONNECTION WITH FUTURE DEVELOPMENT.
 TRACTS GC08A AND GC09A: GOLF COURSE, ACCESS, DRAINAGE & PRIVATE IRRIGATION EASEMENT TRACT.

EASEMENTS

RESERVATION OF EASEMENTS

THERE ARE HEREBY EXPRESSLY RESERVED TO LENNAR HOMES, LLC, A FLORIDA LIMITED LIABILITY COMPANY (THE "OWNER"), ITS SUCCESSORS OR ASSIGNS, EASEMENTS OF TEN (10) FEET IN WIDTH ALONG ALL FRONT LOT LINES, FIVE (5) FEET IN WIDTH ALONG EACH REAR LOT LINE AND TWO AND ONE HALF (2.5) FEET ALONG EACH SIDE LOT LINE ARE HEREBY CREATED AND DEDICATED FOR THE PURPOSE OF ACCOMMODATING DRAINAGE, UTILITIES AND IRRIGATION IN, OVER, UNDER AND UPON SUCH ENCUMBERED REAL PROPERTY. ALL PLATTED UTILITY EASEMENTS ARE ALSO CREATED FOR THE CONSTRUCTION, INSTALLATION, MAINTENANCE, AND OPERATION OF ELECTRIC, CABLE TELEVISION AND RELATED UTILITY SERVICES. WHERE AN AREA GREATER THAN ONE LOT IS USED AS A BUILDING SITE, THE OUTSIDE BOUNDARY OF SAID SITE SHALL BE SUBJECT TO THE LOT LINE EASEMENTS.

UTILITY EASEMENT

THE OWNER DOES HEREBY GRANT NON-EXCLUSIVE EASEMENTS TO THE CITY OF NORTH PORT; FLORIDA POWER AND LIGHT COMPANY; AND OTHER AUTHORIZED UTILITY COMPANIES FOR THE INSTALLATION AND MAINTENANCE OF UNDERGROUND POWER, GAS, TELEPHONE, WATER, SEWER, ELECTRIC, CABLE TELEVISION, AND OTHER UTILITIES, LINES, AND FACILITIES UNDER EACH AREA DEPICTED ON THIS PLAT AS A "PUBLIC UTILITY EASEMENT". ALL UTILITY EASEMENTS SHOWN HEREON SHALL ALSO BE FOR THE CONSTRUCTION, INSTALLATION, MAINTENANCE, AND OPERATION OF CABLE TELEVISION SERVICES; PROVIDED, HOWEVER, NO SUCH CONSTRUCTION, INSTALLATION, MAINTENANCE, AND OPERATION OF CABLE TELEVISION SERVICES SHALL INTERFERE WITH THE FACILITIES AND SERVICES OF AN ELECTRIC, TELEPHONE, GAS, OR OTHER PUBLIC UTILITY, OR WITH THE FACILITIES OR OTHER IMPROVEMENTS CONSTRUCTED THEREIN.

ROADWAY

THE UNDERSIGNED, LENNAR HOMES, LLC., A FLORIDA LIMITED LIABILITY COMPANY, AS THE FEE SIMPLE OWNER, DEDICATES AND CONVEYS TO THE WEST VILLAGES IMPROVEMENT DISTRICT A NON-EXCLUSIVE EASEMENT FOR INGRESS AND EGRESS OVER TRACT 101 FOR THE PERFORMANCE OF WEST VILLAGES IMPROVEMENT DISTRICT OFFICIAL DUTIES.

DRAINAGE

THE UNDERSIGNED, LENNAR HOMES, LLC., A FLORIDA LIMITED LIABILITY COMPANY, AS THE FEE SIMPLE OWNER, DEDICATES AND CONVEYS ALL DRAINAGE EASEMENTS SHOWN ON THIS PLAT TO THE WEST VILLAGES IMPROVEMENT DISTRICT FOR ACCESS AND DRAINAGE PURPOSES AND OTHER PURPOSES INCIDENTAL THERETO.

STREET TREES & LANDSCAPE

THE UNDERSIGNED, LENNAR HOMES, LLC., A FLORIDA LIMITED LIABILITY COMPANY, AS THE FEE SIMPLE OWNER, HEREBY GRANTS NON-EXCLUSIVE STREET TREE AND LANDSCAPE EASEMENTS TO WELLEN PARK GOLF AND COUNTRY CLUB MASTER HOMEOWNER'S ASSOCIATION, INC., A FLORIDA NOT FOR PROFIT CORPORATION AND TO THE CITY OF NORTH PORT, FLORIDA ("CITY"), OVER AND ACROSS THE AREAS FIFTEEN FEET (15') IN WIDTH ALONG THE EXTERIOR BOUNDARIES OF TRACT 101, AS SHOWN ON THE PLAT, TREE MAINTENANCE AND PRUNING SHALL BE THE RESPONSIBILITY OF THE PROPERTY OWNER. IT IS ACKNOWLEDGED THAT THE CITY HAS NO MAINTENANCE OBLIGATIONS ASSOCIATED WITH THESE EASEMENTS.

CERTIFICATE OF APPROVAL OF COUNTY CLERK

STATE OF FLORIDA
 COUNTY OF SARASOTA) SS

I, KAREN E. RUSHING, COUNTY CLERK OF SARASOTA COUNTY, FLORIDA, HEREBY CERTIFY THAT THIS PLAT HAS BEEN EXAMINED AND THAT IT COMPLIES IN FORM WITH ALL THE REQUIREMENTS OF THE STATUTES OF FLORIDA PERTAINING TO MAPS AND PLATS, AND THAT THIS PLAT HAS BEEN FILED FOR RECORD IN PLAT BOOK _____ PAGE _____, PUBLIC RECORDS OF SARASOTA COUNTY, FLORIDA, THIS _____ DAY OF _____, A.D., 2022.

KAREN E. RUSHING
 CLERK OF THE CIRCUIT COURT OF
 SARASOTA COUNTY, FLORIDA

BY: _____
 DEPUTY CLERK

CERTIFICATE OF APPROVAL OF CITY ENGINEER

STATE OF FLORIDA
 COUNTY OF SARASOTA) SS

I HEREBY CERTIFY THAT I HAVE REVIEWED THIS PLAT AND IN MY OPINION, IT CONFORMS WITH THE CURRENT SUBDIVISION ORDINANCE OF THE CITY OF NORTH PORT AND CHAPTER 177, PART 1, FLORIDA STATUTES, ON THIS _____ DAY OF _____, A.D., 2022.

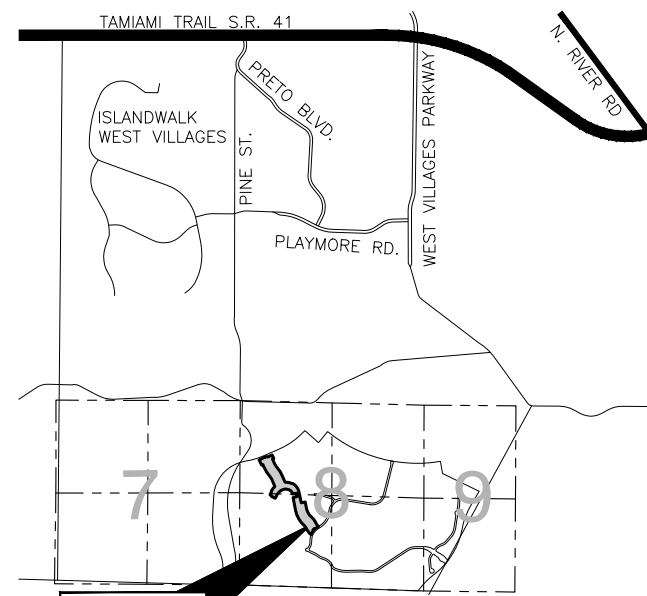
APPROVED: _____
 CITY ENGINEER P.E. NO. _____

CERTIFICATE OF APPROVAL OF CITY SURVEYOR & MAPPER

STATE OF FLORIDA
 COUNTY OF SARASOTA) SS

IT IS HEREBY CERTIFIED THAT I HAVE REVIEWED THIS PLAT FOR CONFORMITY TO CHAPTER 177, PART 1, PLATTING, OF THE FLORIDA STATUTES, AND IS NOT INTENDED TO BE AND SHOULD NOT BE CONSTRUED AS A CERTIFICATION OF THE ACCURACY OR QUALITY OF THE SURVEYING AND MAPPING REFLECTED ON THIS PLAT.

BY: _____ DATE: _____, 2022.
 ALAN K. FISH
 PROFESSIONAL SURVEYOR & MAPPER NO. 3941



LOCATION MAP
 NOT TO SCALE

CERTIFICATE OF APPROVAL OF NORTH PORT CITY COMMISSION

STATE OF FLORIDA
 COUNTY OF SARASOTA) SS

IT IS HEREBY CERTIFIED THAT THIS PLAT HAS BEEN OFFICIALLY ACCEPTED BY THE CITY COMMISSION OF NORTH PORT, A MUNICIPALITY IN THE COUNTY OF SARASOTA, STATE OF FLORIDA, THIS _____ DAY OF _____, A.D., 2022.

APPROVED: _____
 MAYOR, NORTH PORT CITY COMMISSION CITY CLERK, ATTEST

CERTIFICATE OF APPROVAL OF CITY OF NORTH PORT PLANNING AND ZONING ADVISORY BOARD

STATE OF FLORIDA
 COUNTY OF SARASOTA) SS

IT IS HEREBY CERTIFIED THAT THIS PLAT HAS BEEN OFFICIALLY ACCEPTED BY THE CITY OF NORTH PORT PLANNING AND ZONING ADVISORY BOARD, THIS _____ DAY OF _____, A.D., 2022.

APPROVED: _____
 CHAIR

CERTIFICATE OF APPROVAL OF THE NORTH PORT CITY ATTORNEY

STATE OF FLORIDA
 COUNTY OF SARASOTA) SS

I, THE UNDERSIGNED, HEREBY CERTIFY THAT I HAVE EXAMINED AND APPROVED THIS PLAT FOR WELLEN PARK GOLF AND COUNTRY CLUB, PHASE 1C, RECORDING THIS _____ DAY OF _____, A.D., 2022.

 CITY ATTORNEY, CITY OF NORTH PORT

SURVEYOR'S CERTIFICATE:

I HEREBY CERTIFY THAT THE ATTACHED PLAT OF WELLEN PARK GOLF AND COUNTRY CLUB, PHASE 1C, A PARCEL OF LAND LYING IN SECTION 7, 8, AND 9, SARASOTA COUNTY, FLORIDA, WAS PREPARED UNDER MY DIRECTION AND SUPERVISION AND COMPLIES WITH ALL OF THE SURVEY REQUIREMENTS OF CHAPTER 177, PART 1, FLORIDA STATUTES. (F.S.)

I FURTHER CERTIFY THAT THE PERMANENT REFERENCE MONUMENTS (PRM'S) HAVE BEEN PLACED AT THE LOCATIONS SHOWN ON THE PLAT, AND THE PERMANENT CONTROL POINTS (PCP'S), WILL BE INSTALLED WITHIN 1 YEAR FROM THE DATE OF RECORDING AND WILL BE CONFIRMED BY SURVEYORS AFFIDAVIT.

 MICHAEL A. WARD, PLS
 FLORIDA PROFESSIONAL LAND SURVEYOR, PLS LS 5301
 RWA, INC.
 12800 UNIVERSITY DRIVE, SUITE 175
 FORT MYERS, FL 33907
 FLORIDA CERTIFICATE OF AUTHORIZATION LB 6952

CERTIFICATE OF OWNERSHIP AND DEDICATION

LENNAR HOMES, LLC., A FLORIDA LIMITED LIABILITY COMPANY, ("OWNER"), LICENSED TO DO BUSINESS IN THE STATE OF FLORIDA, CERTIFIES OWNERSHIP OF THE PROPERTY DESCRIBED HEREON AND HAS CAUSED THIS PLAT ENTITLED "WELLEN PARK GOLF AND COUNTRY CLUB, PHASE 1C" TO BE MADE AND DOES HEREBY DEDICATE THE FOLLOWING:

1. TO THE CITY OF NORTH PORT, ITS SUCCESSORS AND/OR ASSIGNS:
 - A) A NON-EXCLUSIVE EMERGENCY ACCESS EASEMENT ACROSS, OVER AND UNDER THE ROADS AND RIGHT-OF-WAY SHOWN HEREON AS TRACT 101 FOR INGRESS AND EGRESS OF EMERGENCY VEHICLES AND FOR AUTHORIZED GOVERNMENTAL SERVICES.
 - B) ALL PUBLIC UTILITY AND ACCESS EASEMENTS ALONG AND ADJACENT TO TRACT 101 WITHOUT RESPONSIBILITY FOR MAINTENANCE.
 - C) ALL STREET TREE AND LANDSCAPE EASEMENTS AS SHOWN ON THIS PLAT WITHOUT RESPONSIBILITY FOR MAINTENANCE.
2. TO THE WEST VILLAGES IMPROVEMENT DISTRICT ("WVID"), ITS SUCCESSORS AND/OR ASSIGNS:
 - A) THE UNDERSIGNED, LENNAR HOMES, LLC., A FLORIDA LIMITED LIABILITY COMPANY, ("OWNER"), AS THE FEE SIMPLE OWNER OF THE LANDS PLATTED HEREIN, INTENDS TO DEDICATE AND CONVEY TRACTS 503A, 504, AND 505A, TO THE WEST VILLAGES IMPROVEMENT DISTRICT FOR STORMWATER MANAGEMENT AND OTHER LAWFUL PURPOSES, IN FEE SIMPLE BY SUBSEQUENT, SEPARATE INSTRUMENT, SAID TRACTS AND STORMWATER SYSTEMS LOCATED THEREON BEING THE PERPETUAL MAINTENANCE OBLIGATION OF THE WEST VILLAGES IMPROVEMENT DISTRICT, ITS SUCCESSORS AND/OR ASSIGNS.
 - B) THE UNDERSIGNED, LENNAR HOMES, LLC., A FLORIDA LIMITED LIABILITY COMPANY, ("OWNER"), AS THE FEE SIMPLE OWNER OF THE LANDS PLATTED HEREIN, INTENDS TO DEDICATE AND CONVEY TRACT 712A TO THE WEST VILLAGES IMPROVEMENT DISTRICT FOR PRESERVATION AND OTHER LAWFUL PURPOSES, IN FEE SIMPLE BY SUBSEQUENT, SEPARATE INSTRUMENT, SAID TRACT BEING THE PERPETUAL MAINTENANCE OBLIGATION OF THE WEST VILLAGES IMPROVEMENT DISTRICT, ITS SUCCESSORS AND/OR ASSIGNS. THE TRACTS SHALL NOT BE ALTERED FROM THEIR NATURAL STATE, AND ACTIVITIES PROHIBITED WITHIN THE TRACTS INCLUDE BUT ARE NOT LIMITED TO: CONSTRUCTING OR PLACING BUILDINGS ON OR ABOVE THE GROUND; DUMPING OR STORING SOIL OR OTHER SUBSTANCES SUCH AS TRASH; REMOVAL OR DESTRUCTION OF TREES, SHRUBS, OR OTHER VEGETATION; EXCAVATION, DREDGING OR REMOVAL OF SOIL MATERIAL; OR ANY OTHER ACTIVITIES DETRIMENTAL TO DRAINAGE, FLOOD CONTROL, WATER CONSERVATION, EROSION CONTROL, OR FISH AND WILDLIFE HABITAT CONSERVATION OR PRESERVATION.
3. TO THE WELLEN PARK GOLF AND COUNTRY CLUB MASTER HOMEOWNER'S ASSOCIATION, INC., A FLORIDA NOT FOR PROFIT CORPORATION, ITS SUCCESSORS AND/OR ASSIGNS:
 - A) ALL STREET TREE AND LANDSCAPE EASEMENTS AS SHOWN ON THIS PLAT.
 - B) TRACT 101 AS PRIVATE ROAD AND RIGHT OF WAY UNDER THE TERMS OF THE DECLARATION.
 - C) TRACTS 611, 612 AND 613 AS COMMON AREA TRACTS UNDER THE TERMS OF THE DECLARATION, WHICH WILL BE MAINTAINED BY THE DECLARATION, AND THE USE OF WHICH WILL BE GOVERNED BY THE DECLARATION
4. TO THE WELLEN PARK GOLF AND COUNTRY CLUB, INC.
 - A) TRACTS GC08A AND GC09A AS GOLF COURSE TRACTS FOR ACCESS, MAINTENANCE, DRAINAGE, IRRIGATION, AND OTHER LAWFUL PURPOSES INCIDENTAL THERETO.
5. LENNAR HOMES, LLC., A FLORIDA LIMITED LIABILITY COMPANY WILL RESERVE:
 - A) TRACT 901 AS FUTURE DEVELOPMENT.
 - B) ALL RESIDENTIAL LOTS.

OWNER ACCEPTANCE BLOCK

LENNAR HOMES, LLC.,
 A FLORIDA LIMITED LIABILITY COMPANY

 WITNESS

 PRINTED NAME OF WITNESS

 WITNESS

 PRINTED NAME OF WITNESS

STATE OF FLORIDA)
 COUNTY OF LEE)

THE FOREGOING INSTRUMENT WAS ACKNOWLEDGED BEFORE ME BY MEANS OF PHYSICAL PRESENCE OR ONLINE NOTARIZATION, THIS _____ DAY OF _____, 2022, BY _____, AS VICE PRESIDENT OF LENNAR HOMES, LLC, A FLORIDA LIMITED LIABILITY COMPANY. HE () IS PERSONALLY KNOWN TO ME OR () PRODUCED _____ AS IDENTIFICATION.

(AFFIX SEAL)

 PRINT NAME:
 NOTARY PUBLIC, STATE OF FLORIDA

WEST VILLAGES IMPROVEMENT DISTRICT (WVID) ACCEPTANCE AND ACKNOWLEDGMENT

THE WEST VILLAGES IMPROVEMENT DISTRICT (WVID) HEREBY ACCEPTS THE DEDICATION OF ALL DRAINAGE EASEMENTS, ROADWAY INGRESS AND EGRESS EASEMENTS, AS SHOWN ON THIS PLAT.

 SECRETARY/ASSISTANT SECRETARY JOHN LUCZYNSKI, CHAIRMAN

STATE OF FLORIDA
 COUNTY OF SARASOTA)

THE FOREGOING INSTRUMENT WAS ACKNOWLEDGED BEFORE ME BY MEANS OF PHYSICAL PRESENCE OR ONLINE NOTARIZATION, THIS _____ DAY OF _____, 2022, BY JOHN LUCZYNSKI, AS CHAIRMAN OF THE WEST VILLAGES IMPROVEMENT DISTRICT, FOR AND ON BEHALF OF THE WEST VILLAGES IMPROVEMENT DISTRICT.

(AFFIX SEAL)

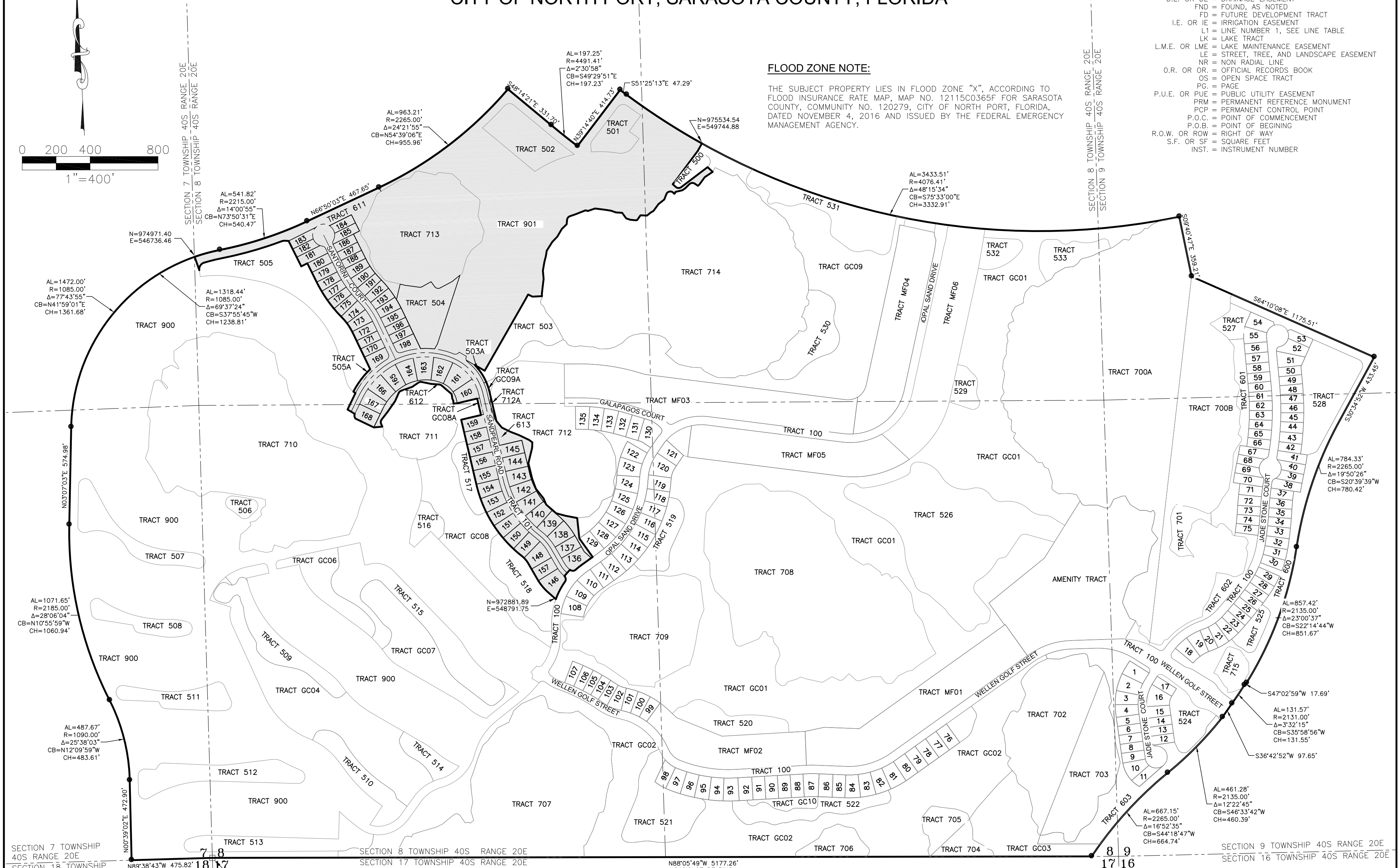
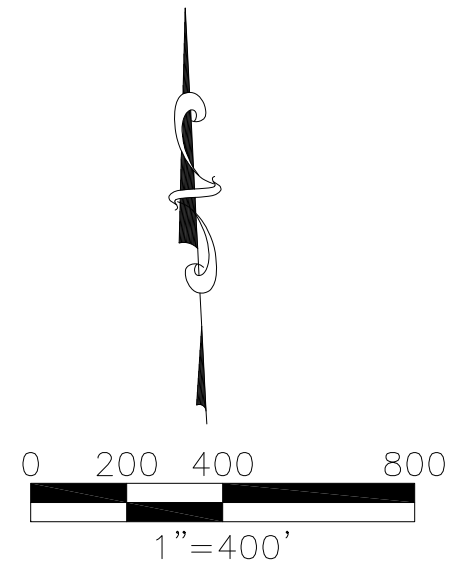
 PRINT NAME:
 NOTARY PUBLIC, STATE OF FLORIDA



12800 UNIVERSITY DRIVE, SUITE 175
FORT MYERS, FLORIDA 33907
PHONE: (239) 597-0575 FAX: (239) 597-0578
FLORIDA CERTIFICATE OF AUTHORIZATION # LB-6952
PREPARED BY
MICHAEL A. WARD, PLS LS 5301

WELLEN PARK GOLF AND COUNTRY CLUB, PHASE 1C

A REPLAT OF TRACT 504 AND A PORTION OF TRACTS GC08, GC09, 503,
505, AND 900 WELLEN PARK GOLF AND COUNTRY CLUB, PHASE 1A
A SUBDIVISION, RECORDED IN PLAT BOOK 56 PAGES 75-159
SECTION 8, TOWNSHIP 40 SOUTH, RANGE 20 EAST,
CITY OF NORTH PORT, SARASOTA COUNTY, FLORIDA



FLOOD ZONE NOTE:

THE SUBJECT PROPERTY LIES IN FLOOD ZONE "X", ACCORDING TO FLOOD INSURANCE RATE MAP, MAP NO. 12115C0365F FOR SARASOTA COUNTY, COMMUNITY NO. 120279, CITY OF NORTH PORT, FLORIDA, DATED NOVEMBER 4, 2016 AND ISSUED BY THE FEDERAL EMERGENCY MANAGEMENT AGENCY.

ABBREVIATIONS:

- A.E. OR AE = ACCESS EASEMENT
- C1 = CURVE NUMBER 1, SEE CURVE TABLE
- CM = CONCRETE MONUMENT, AS NOTED
- CUE = CITY UTILITY EASEMENT
- D.E. OR DE = DRAINAGE EASEMENT
- FND = FOUND, AS NOTED
- FD = FUTURE DEVELOPMENT TRACT
- I.E. OR IE = IRRIGATION EASEMENT
- L1 = LINE NUMBER 1, SEE LINE TABLE
- LK = LAKE TRACT
- L.M.E. OR LME = LAKE MAINTENANCE EASEMENT
- LE = STREET, TREE, AND LANDSCAPE EASEMENT
- NR = NON RADIAL LINE
- O.R. OR OR = OFFICIAL RECORDS BOOK
- OS = OPEN SPACE TRACT
- PG. = PAGE
- P.U.E. OR PUE = PUBLIC UTILITY EASEMENT
- PRM = PERMANENT REFERENCE MONUMENT
- PCP = PERMANENT CONTROL POINT
- P.O.C. = POINT OF COMMENCEMENT
- P.O.B. = POINT OF BEGINNING
- R.O.W. OR ROW = RIGHT OF WAY
- S.F. OR SF = SQUARE FEET
- INST. = INSTRUMENT NUMBER

P.O.B.
FOUND 4"x4" CONCRETE MONUMENT,
SOUTHWEST CORNER, SECTION 8,
TOWNSHIP 40 SOUTH, RANGE 20 EAST
N. 971427.933
E. 546716.154

OVERALL CURRENT PLAT SHEET

NOTE: REFER TO THE FOLLOWING SHEETS OF THIS
PLAT FOR DETAILED LABELING AND DIMENSIONING.

LEGEND:

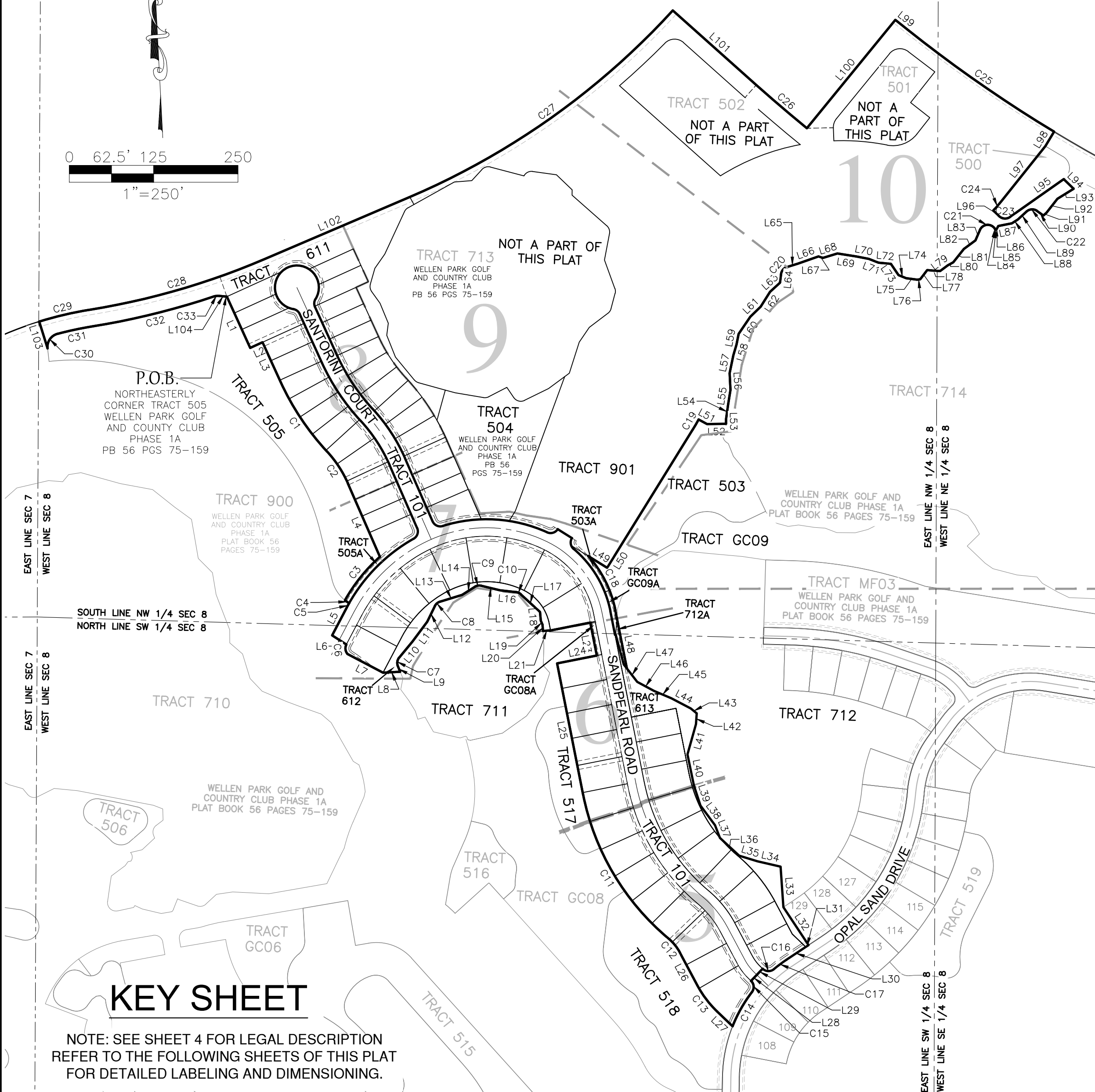
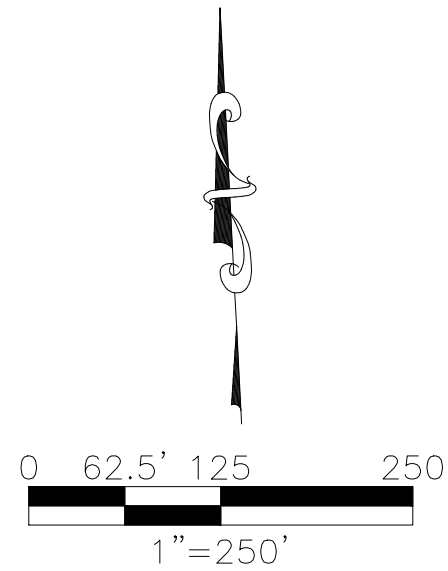
- INDICATES 5/8" IRON PIN WITH CAP, PRM LB 6952
- INDICATES FOUND 5/8" IRON PIN WITH CAP, PRM LB 6952
- ⊙ INDICATES PARKER KALON NAIL WITH DISC, PCP LB 6952
- +— INDICATES CHANGE IN DIRECTION



12800 UNIVERSITY DRIVE, SUITE 175
 FORT MYERS, FLORIDA 33907
 PHONE: (239) 597-0575 FAX: (239) 597-0578
 FLORIDA CERTIFICATE OF AUTHORIZATION # LB-6952
 PREPARED BY
 MICHAEL A. WARD, PLS LS 5301

WELLEN PARK GOLF AND COUNTRY CLUB, PHASE 1C

A REPLAT OF TRACT 504 AND A PORTION OF
 TRACTS GC08, GC09, 503, 505, 712 AND 900
 WELLEN PARK GOLF AND COUNTRY CLUB, PHASE 1A
 A SUBDIVISION, RECORDED IN PLAT BOOK 56 PAGES 75-159
 SECTION 8, TOWNSHIP 40 SOUTH, RANGE 20 EAST,
 CITY OF NORTH PORT, SARASOTA COUNTY, FLORIDA



LINE TABLE								
LINE	BEARING	LENGTH	LINE	BEARING	LENGTH	LINE	BEARING	LENGTH
L1	S24°30'05"E	167.00'	L44	N62°15'33"W	65.33'	L89	N47°31'30"E	34.37'
L2	N65°29'55"E	40.00'	L45	N66°48'39"W	55.44'	L90	S54°40'20"E	23.32'
L3	S24°30'05"E	127.98'	L46	N61°51'32"W	56.87'	L91	N47°31'59"E	12.31'
L4	S23°36'49"E	237.16'	L47	N37°42'02"W	50.13'	L92	N38°06'16"E	52.28'
L5	S27°46'02"W	92.80'	L48	N11°13'08"W	175.75'	L93	N58°12'20"E	56.54'
L6	S57°21'47"E	50.18'	L49	S58°14'56"E	66.50'	L94	N45°39'44"W	41.08'
L7	S62°13'58"E	119.01'	L50	N31°45'04"E	480.88'	L95	S54°48'54"W	195.14'
L8	N86°57'48"E	51.04'	L51	S61°20'43"E	28.41'	L96	N46°27'43"W	24.46'
L9	N22°38'47"W	17.64'	L52	N89°23'03"E	56.55'	L97	N38°35'35"E	210.40'
L10	N39°38'37"E	61.82'	L53	N00°36'57"W	13.81'	L98	N31°08'54"E	50.00'
L11	N36°36'01"E	73.19'	L54	N08°10'33"E	44.65'	L99	N51°25'13"W	47.29'
L12	N25°59'05"E	51.68'	L55	N09°14'20"E	43.21'	L100	S39°14'40"W	414.73'
L13	N72°53'13"E	68.67'	L56	N02°57'08"W	49.87'	L101	N48°14'21"W	331.70'
L14	N57°32'43"E	44.36'	L57	N11°43'42"E	54.02'	L102	S66°50'03"W	467.65'
L15	S76°30'01"E	57.90'	L58	N16°34'44"E	33.23'	L103	S17°15'33"E	83.26'
L16	S83°43'16"E	46.91'	L59	N11°10'50"E	32.10'	L104	S84°46'10"E	23.22'
L17	S47°29'36"E	77.74'	L60	N34°12'59"E	61.46'			
L18	S05°01'54"E	25.89'	L61	N45°45'20"E	42.88'			
L19	S22°41'51"E	13.22'	L62	N32°18'29"E	52.16'			
L20	S03°39'45"E	18.32'	L63	N47°33'41"E	40.01'			
L21	N86°20'15"E	22.61'	L64	N06°48'20"E	25.79'			
L22	N78°46'52"E	120.00'	L65	N72°54'55"E	33.77'			
L23	S11°13'08"E	99.66'	L66	N70°43'20"E	65.08'			
L24	S78°46'52"W	120.00'	L67	S71°34'12"E	13.83'			
L25	S11°13'08"E	395.79'	L68	N72°54'09"E	44.70'			
L26	S28°03'19"E	109.63'	L69	S81°03'09"E	57.16'			
L27	S46°14'24"E	62.91'	L70	S79°00'37"E	37.18'			
L28	N43°45'36"E	25.00'	L71	S68°35'27"E	31.15'			
L29	N43°45'36"E	25.00'	L72	S84°31'21"E	36.82'			
L30	N56°25'00"E	68.55'	L73	S34°02'28"E	40.26'			
L31	N56°25'00"E	10.00'	L74	S68°08'38"E	24.35'			
L32	N33°35'00"W	135.00'	L75	S82°10'45"E	32.83'			
L33	N03°59'39"W	120.54'	L76	N81°51'06"E	9.26'			
L34	N76°59'31"W	70.18'	L77	N37°23'24"E	34.07'			
L35	N73°04'30"W	56.80'	L78	S85°48'15"E	38.46'			
L36	N47°07'43"W	77.67'	L79	N53°01'59"E	28.31'			
L37	N21°10'47"W	40.37'	L80	N61°29'31"E	18.53'			
L38	N36°33'33"W	72.37'	L81	N38°22'52"E	50.67'			
L39	N18°06'25"W	62.41'	L82	N53°44'25"E	42.68'			
L40	N11°44'01"W	94.40'	L83	N23°12'15"E	33.76'			
L41	N15°39'48"E	93.10'	L84	N27°30'21"E	11.76'			
L42	N04°09'50"E	32.20'	L85	N78°42'43"E	40.86'			
L43	N50°52'19"W	22.68'	L86	N57°36'57"E	21.33'			

- ABBREVIATIONS:**
- A.E. OR AE = ACCESS EASEMENT
 - C1 = CURVE NUMBER 1 ON CURVE TABLE
 - CM = CONCRETE MONUMENT, AS NOTED
 - CUE = CITY UTILITY EASEMENT
 - D.E. OR DE = DRAINAGE EASEMENT
 - FND = FOUND, AS NOTED
 - FD = FUTURE DEVELOPMENT TRACT
 - I.E. OR IE = IRRIGATION EASEMENT
 - L1 = LINE NUMBER 1, SEE LINE TABLE
 - LK = LAKE TRACT
 - L.M.E. OR LME = LAKE MAINTENANCE EASEMENT
 - L.E. OR LE = TREE/LANDSCAPE EASEMENT
 - LS = STREET TREE EASEMENT
 - NR = NON RADIAL LINE
 - O.R. OR OR = OFFICIAL RECORDS BOOK
 - OS = OPEN SPACE TRACT
 - PG = PAGE
 - P.U.E. OR PUE = PUBLIC UTILITY EASEMENT
 - PRM = PERMANENT REFERENCE MONUMENT
 - PCP = PERMANENT CONTROL POINT
 - POC = POINT OF COMMENCEMENT
 - POB = POINT OF BEGINNING
 - R.O.W. OR ROW = RIGHT OF WAY
 - S.F. OR SF = SQUARE FEET
 - INST. = INSTRUMENT NUMBER

- LEGEND:**
- INDICATES 5/8" IRON PIN WITH CAP, PRM LB 6952
 - INDICATES FOUND 5/8" IRON PIN WITH CAP, PRM LB 6952
 - ⊙ INDICATES PARKER KALON NAIL WITH DISC, PCP LB 6952
 - +— INDICATES CHANGE IN DIRECTION

CURVE TABLE					CURVE TABLE						
CURVE	LENGTH	RADIUS	DELTA	CHORD BEARING	CHORD	CURVE	LENGTH	RADIUS	DELTA	CHORD BEARING	CHORD
C1	250.36'	785.00'	18°16'23"	S33°38'16"E	249.30'	C21	52.66'	25.00'	120°41'23"	N83°32'56"E	43.45'
C2	113.70'	340.00'	19°09'39"	S33°11'38"E	113.17'	C22	33.95'	25.00'	77°48'10"	N86°25'35"E	31.40'
C3	166.22'	509.83'	18°40'48"	S38°47'39"W	165.48'	C23	34.35'	25.00'	78°43'24"	N85°49'24"W	31.71'
C4	15.07'	110.00'	7°51'06"	S55°13'50"E	15.06'	C24	35.39'	410.00'	4°56'43"	N41°03'56"E	35.38'
C5	15.15'	505.00'	1°43'06"	S28°37'35"W	15.14'	C25	528.73'	4076.41'	7°25'54"	N55°08'09"W	528.36'
C6	30.05'	25.00'	68°51'49"	S06°39'53"E	28.27'	C26	197.25'	4491.41'	2°30'58"	N49°29'51"W	197.23'
C7	27.18'	25.00'	62°17'24"	N08°29'55"E	25.86'	C27	963.21'	2265.00'	24°21'55"	S54°39'06"W	955.96'
C8	20.46'	25.00'	46°54'08"	N49°26'09"E	19.90'	C28	541.82'	2215.00'	14°00'55"	S73°50'31"W	540.47'
C9	20.05'	25.00'	45°57'16"	N80°31'21"E	19.52'	C29	153.55'	1085.00'	8°06'32"	S76°47'43"W	153.43'
C10	15.81'	25.00'	36°13'40"	S65°36'26"E	15.55'	C30	56.85'	40.00'	81°25'55"	N34°17'16"E	52.18'
C11	506.91'	748.00'	38°49'43"	S30°38'00"E	497.27'	C31	105.60'	1035.00'	5°50'45"	N77°55'36"E	105.55'
C12	53.74'	140.00'	21°59'32"	S39°03'05"E	53.41'	C32	370.58'	2265.00'	9°22'27"	N76°09'45"E	370.17'
C13	98.39'	310.00'	18°11'05"	S37°08'52"E	97.98'	C33	16.58'	40.00'	23°45'19"	N83°21'10"E	16.47'
C14	116.72'	425.00'	15°44'09"	N29°30'46"E	116.36'						
C15	36.49'	25.00'	83°37'14"	N04°25'47"W	33.33'						
C16	36.49'	25.00'	83°37'14"	S88°03'01"E	33.33'						
C17	46.56'	425.00'	6°16'38"	N53°16'41"E	46.54'						
C18	182.50'	340.00'	30°45'15"	N26°35'45"W	180.32'						
C19	35.67'	660.00'	3°05'47"	N30°12'10"E	35.66'						
C20	28.85'	25.00'	66°06'36"	N39°51'38"E	27.27'						

FLOOD ZONE NOTE:
 THE SUBJECT PROPERTY LIES IN FLOOD ZONE "X", ACCORDING TO FLOOD INSURANCE RATE MAP, MAP NO. 12115C0365F FOR SARASOTA COUNTY, COMMUNITY NO. 120279, CITY OF NORTH PORT, FLORIDA, DATED NOVEMBER 4, 2016 AND ISSUED BY THE FEDERAL EMERGENCY MANAGEMENT AGENCY.

KEY SHEET

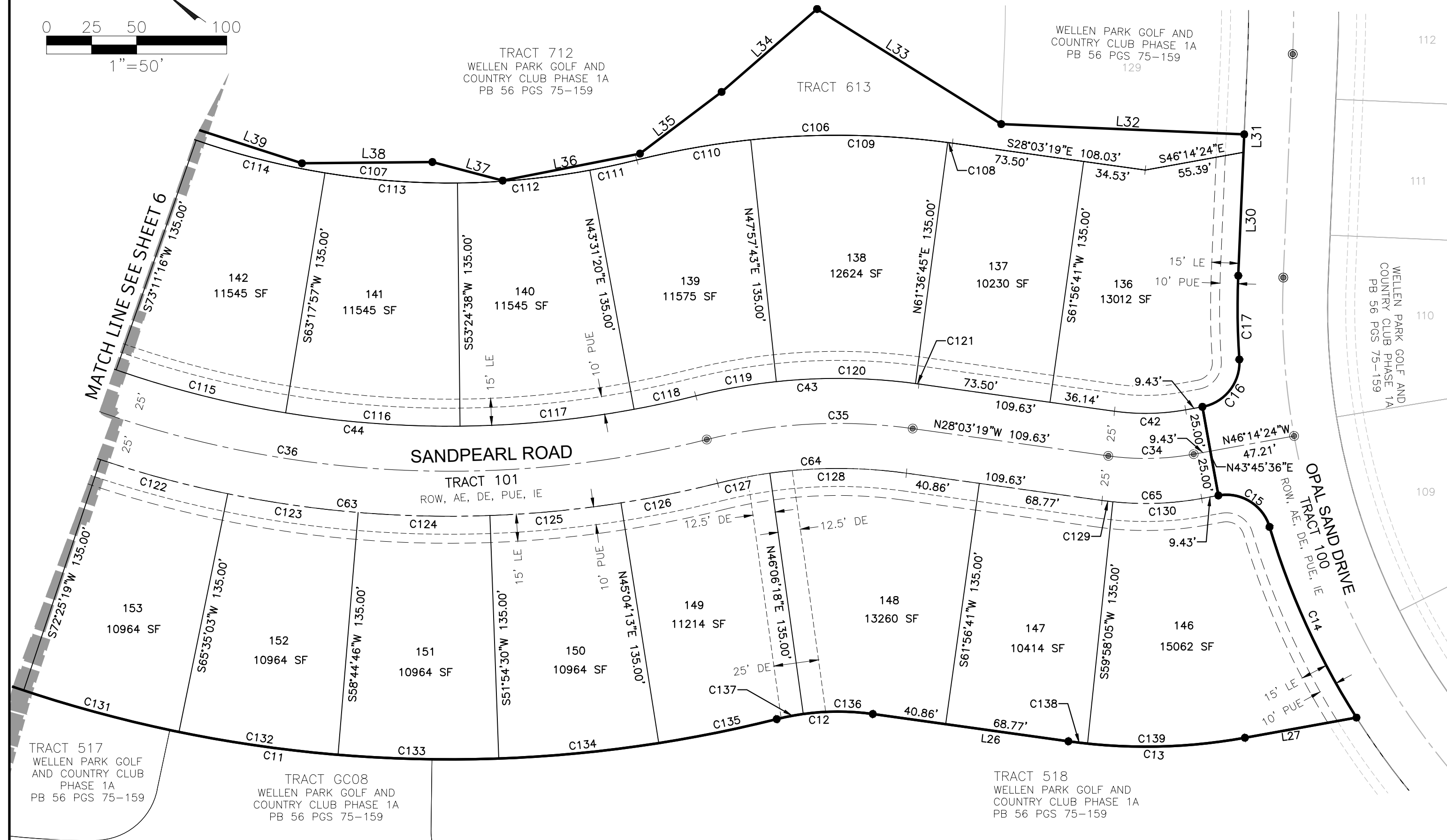
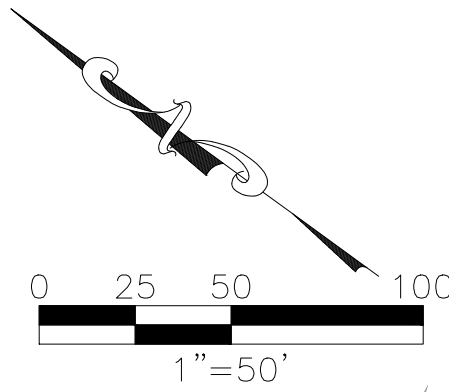
NOTE: SEE SHEET 4 FOR LEGAL DESCRIPTION REFER TO THE FOLLOWING SHEETS OF THIS PLAT FOR DETAILED LABELING AND DIMENSIONING.



12800 UNIVERSITY DRIVE, SUITE 175
 FORT MYERS, FLORIDA 33907
 PHONE: (239) 597-0575 FAX: (239) 597-0578
 FLORIDA CERTIFICATE OF AUTHORIZATION # LB-6952
 PREPARED BY
 MICHAEL A. WARD, PLS LS 5301

WELLEN PARK GOLF AND COUNTRY CLUB, PHASE 1C

A REPLAT OF TRACT 504 AND A PORTION OF TRACTS
 GC08, GC09, 503, 505, 712 AND 900
 WELLEN PARK GOLF AND COUNTRY CLUB, PHASE 1A
 A SUBDIVISION, RECORDED IN PLAT BOOK 56 PAGES 75-159
 SECTION 8, TOWNSHIP 40 SOUTH, RANGE 20 EAST,
 CITY OF NORTH PORT, SARASOTA COUNTY, FLORIDA



CURVE TABLE					
CURVE	LENGTH	RADIUS	DELTA	CHORD BEARING	CHORD
C11	506.91'	748.00'	38°49'43"	S30°38'00"E	497.27'
C12	53.74'	140.00'	21°59'32"	S39°03'05"E	53.41'
C13	98.39'	310.00'	18°11'05"	S37°08'52"E	97.98'
C14	116.72'	425.00'	15°44'09"	N29°30'46"E	116.36'
C15	36.49'	25.00'	83°37'14"	N04°25'47"W	33.33'
C16	36.49'	25.00'	83°37'14"	S88°03'01"E	33.33'
C17	46.56'	425.00'	6°16'38"	N53°16'41"E	46.54'
C34	47.61'	150.00'	18°11'05"	N37°08'52"W	47.41'
C35	115.15'	300.00'	21°59'32"	N39°03'05"W	114.45'
C36	398.48'	588.00'	38°49'43"	N30°38'00"W	390.90'
C42	39.67'	125.00'	18°11'05"	N37°08'52"W	39.51'
C43	124.75'	325.00'	21°59'32"	N39°03'05"W	123.98'
C44	381.54'	563.00'	38°49'43"	N30°38'00"W	374.28'
C63	415.42'	613.00'	38°49'43"	S30°38'00"E	407.52'
C64	105.56'	275.00'	21°59'32"	S39°03'05"E	104.91'
C65	55.54'	175.00'	18°11'05"	S37°08'52"E	55.31'
C106	176.57'	460.00'	21°59'32"	N39°03'05"W	175.48'
C107	290.05'	428.00'	38°49'43"	N30°38'00"W	284.53'
C108	2.67'	460.00'	0°19'56"	N28°13'17"W	2.67'
C109	109.59'	460.00'	13°39'01"	N35°12'46"W	109.33'
C110	64.31'	460.00'	8°00'35"	N46°02'34"W	64.25'
C111	26.67'	428.00'	3°34'11"	S48°15'46"E	26.66'
C112	73.87'	428.00'	9°53'19"	S41°32'01"E	73.78'
C113	73.87'	428.00'	9°53'19"	S31°38'42"E	73.78'
C114	73.87'	428.00'	9°53'19"	S21°45'23"E	73.78'
C115	97.17'	563.00'	9°53'19"	S21°45'23"E	97.05'
C116	97.17'	563.00'	9°53'19"	S31°38'42"E	97.05'
C117	97.17'	563.00'	9°53'19"	S41°32'01"E	97.05'
C118	35.08'	563.00'	3°34'11"	S48°15'46"E	35.07'
C119	45.43'	325.00'	8°00'35"	N46°02'34"W	45.40'
C120	77.43'	325.00'	13°39'01"	N35°12'46"W	77.25'
C121	1.88'	325.00'	0°19'56"	N28°13'17"W	1.88'
C122	73.16'	613.00'	6°50'16"	S20°59'49"E	73.11'
C123	73.16'	613.00'	6°50'16"	S27°50'05"E	73.11'
C124	73.16'	613.00'	6°50'16"	S34°40'22"E	73.11'
C125	73.16'	613.00'	6°50'16"	S41°30'38"E	73.11'
C126	54.76'	613.00'	5°07'05"	S47°29'19"E	54.74'
C127	29.53'	275.00'	6°09'10"	N46°58'17"W	29.52'
C128	76.02'	275.00'	15°50'23"	N35°58'30"W	75.78'
C129	6.04'	175.00'	1°58'36"	S29°02'37"E	6.04'
C130	49.50'	175.00'	16°12'29"	S38°08'09"E	49.34'
C131	89.27'	748.00'	6°50'16"	S20°59'49"E	89.22'
C132	89.27'	748.00'	6°50'16"	S27°50'05"E	89.22'
C133	89.27'	748.00'	6°50'16"	S34°40'22"E	89.22'
C134	89.27'	748.00'	6°50'16"	S41°30'38"E	89.22'
C135	66.82'	748.00'	5°07'05"	S47°29'19"E	66.79'
C136	38.70'	140.00'	15°50'23"	N35°58'30"W	38.58'
C137	15.03'	140.00'	6°09'10"	N46°58'17"W	15.03'
C138	10.69'	310.00'	1°58'36"	S29°02'37"E	10.69'
C139	87.69'	310.00'	16°12'29"	S38°08'09"E	87.40'

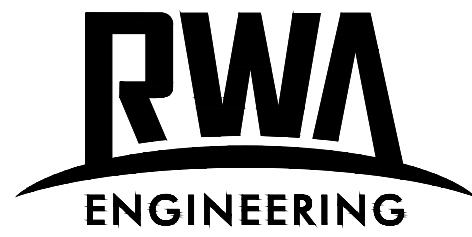
ABBREVIATIONS:
 A.E. OR AE = ACCESS EASEMENT
 C1 = CURVE NUMBER 1, SEE CURVE TABLE
 CM = CONCRETE MONUMENT, AS NOTED
 CUE = CITY UTILITY EASEMENT
 D.E. OR DE = DRAINAGE EASEMENT
 FND = FOUND, AS NOTED
 FD = FUTURE DEVELOPMENT TRACT
 I.E. OR IE = IRRIGATION EASEMENT
 L1 = LINE NUMBER 1, SEE LINE TABLE
 LK = LAKE TRACT
 L.M.E. OR LME = LAKE MAINTENANCE EASEMENT
 L.E. OR LE = TREE/LANDSCAPE EASEMENT
 LS = STREET TREE EASEMENT
 NR = NON RADIAL LINE
 O.R. OR OR = OFFICIAL RECORDS BOOK
 OS = OPEN SPACE TRACT
 PG. = PAGE
 P.U.E. OR PUE = PUBLIC UTILITY EASEMENT
 PRM = PERMANENT REFERENCE MONUMENT
 PCP = PERMANENT CONTROL POINT
 P.O.C. = POINT OF COMMENCEMENT
 P.O.B. = POINT OF BEGINNING
 R.O.W. OR ROW = RIGHT OF WAY
 S.F. OR SF = SQUARE FEET
 INST. = INSTRUMENT NUMBER

TRACT	USE	DESIGNATIONS	SQUARE FEET
TRACT GC08A	GOLF COURSE	A.E., D.E., I.E.	1,495
TRACT GC09A	GOLF COURSE	A.E., D.E., I.E.	1,676
TRACT 101	62 SINGLE FAMILY PRIVATE ROAD	A.E., R.O.W., D.E., P.U.E., L.E.	165,081
TRACT 503A	STORMWATER/LAKE MANAGEMENT	A.E., D.E., P.U.E., L.M.E.	2,222
TRACT 504	STORMWATER/LAKE MANAGEMENT	A.E., D.E., P.U.E., L.M.E.	106,156
TRACT 505A	STORMWATER/LAKE MANAGEMENT	A.E., D.E., P.U.E., L.M.E.	2,447
TRACT 611	COMMON AREA	A.E., D.E., I.E., P.U.E.	89,770
TRACT 612	COMMON AREA	A.E., D.E., I.E., P.U.E.	15,365
TRACT 613	COMMON AREA	A.E., D.E., I.E., P.U.E.	28,876
TRACT 712A	CONSERVATION EASEMENT	D.E., P.U.E.	1,249
TRACT 901	FUTURE DEVELOPMENT TRACT	F.D., A.E., D.E., P.U.E.	1,154,406

GENERAL NOTES:
 1. ALL DIMENSIONS ARE IN FEET AND DECIMAL PARTS THEREOF.
 2. ALL LINES ARE RADIAL TO CIRCULAR CURVE UNLESS NOTED AS NON-RADIAL. RADIAL REFERENCES TO INDIVIDUAL LOT OR TRACT LINES REFER TO THE FRONT RIGHT-OF-WAY LINE AND DO NOT REFERENCE THE RADIAL RELATIONSHIP OF THE REAR OR SIDE LOT/TRACT LINES.
 3. BEARINGS ARE BASED ON THE SOUTH LINE OF THE BOUNDARY OF WELLEN PARK GOLF AND COUNTRY CLUB, PHASE 1A, WHERE SAID SOUTH LINE BEARS N88°05'49"W.

LEGEND:
 ● INDICATES 5/8" IRON PIN WITH CAP, PRM LB 6952
 ○ INDICATES FOUND 5/8" IRON PIN WITH CAP, PRM LB 6952
 ⊙ INDICATES PARKER KALON NAIL WITH DISC, PCP LB 6952
 —+— INDICATES CHANGE IN DIRECTION

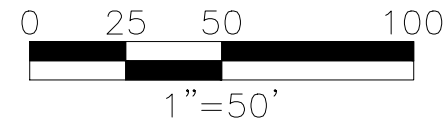
LINE TABLE					
LINE	BEARING	LENGTH	LINE	BEARING	LENGTH
L21	N86°20'15"E	22.61'	L33	N03°59'39"W	120.54'
L26	S28°03'19"E	109.63'	L34	N76°59'31"W	70.18'
L27	S46°14'24"E	62.91'	L35	N73°04'30"W	56.80'
L28	N43°45'36"E	25.00'	L36	N47°07'43"W	77.67'
L29	N43°45'36"E	25.00'	L37	N21°10'47"W	40.37'
L30	N56°25'00"E	68.55'	L38	N36°33'33"W	72.37'
L31	N56°25'00"E	10.00'	L39	N18°06'25"W	62.41'
L32	N33°35'00"W	135.00'			



12800 UNIVERSITY DRIVE, SUITE 175
 FORT MYERS, FLORIDA 33907
 PHONE: (239) 597-0575 FAX: (239) 597-0578
 FLORIDA CERTIFICATE OF AUTHORIZATION # LB-6952
 PREPARED BY
 MICHAEL A. WARD, PLS LS 5301

WELLEN PARK GOLF AND COUNTRY CLUB, PHASE 1C

A REPLAT OF TRACT 504 AND A PORTION OF TRACTS
 GC08, GC09, 503, 505, 712 AND 900
 WELLEN PARK GOLF AND COUNTRY CLUB, PHASE 1A
 A SUBDIVISION, RECORDED IN PLAT BOOK 56 PAGES 75-159
 SECTION 8, TOWNSHIP 40 SOUTH, RANGE 20 EAST,
 CITY OF NORTH PORT, SARASOTA COUNTY, FLORIDA



CURVE TABLE					
CURVE	LENGTH	RADIUS	DELTA	CHORD BEARING	CHORD
C36	398.48'	588.00'	38°49'43"	N30°38'00"W	390.90'
C44	381.54'	563.00'	38°49'43"	N30°38'00"W	374.28'
C63	415.42'	613.00'	38°49'43"	S30°38'00"E	407.52'
C141	83.02'	748.00'	6°21'33"	S14°23'54"E	82.98'
C142	68.03'	613.00'	6°21'33"	S14°23'54"E	68.00'
C143	54.96'	563.00'	5°35'36"	S14°00'56"E	54.94'
C144	41.78'	428.00'	5°35'36"	S14°00'56"E	41.76'

LINE TABLE		
LINE	BEARING	LENGTH
L21	N86°20'15"E	22.61'
L105	N11°13'08"W	75.50'
L209	S37°42'02"E	15.14'
L210	N78°46'52"E	15.00'
L211	S78°46'52"W	15.00'
L214	N11°13'08"W	21.13'
L218	S04°09'33"W	48.83'
L219	N11°13'08"W	71.02'
L250	S78°46'52"W	2.05'

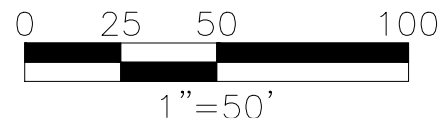
- LEGEND:**
- INDICATES 5/8" IRON PIN WITH CAP, PRM LB 6952
 - INDICATES FOUND 5/8" IRON PIN WITH CAP, PRM LB 6952
 - ⊙ INDICATES PARKER KALON NAIL WITH DISC, PCP LB 6952
 - ⊕ INDICATES CHANGE IN DIRECTION

- GENERAL NOTES:**
1. ALL DIMENSIONS ARE IN FEET AND DECIMAL PARTS THEREOF.
 2. ALL LINES ARE RADIAL TO CIRCULAR CURVE UNLESS NOTED AS NON-RADIAL, RADIAL REFERENCES TO INDIVIDUAL LOT OR TRACT LINES REFER TO THE FRONT RIGHT-OF-WAY LINE AND DO NOT REFERENCE THE RADIAL RELATIONSHIP OF THE REAR OR SIDE LOT/TRACT LINES.
 3. BEARINGS ARE BASED ON THE SOUTH LINE OF THE BOUNDARY OF WELLEN PARK GOLF AND COUNTRY CLUB, PHASE 1A, WHERE SAID SOUTH LINE BEARS N88°05'49"W.

- ABBREVIATIONS:**
- A.E. OR AE = ACCESS EASEMENT
 - C1 = CURVE NUMBER 1, SEE CURVE TABLE
 - CM = CONCRETE MONUMENT, AS NOTED
 - CUE = CITY UTILITY EASEMENT
 - D.E. OR DE = DRAINAGE EASEMENT
 - FND = FOUND, AS NOTED
 - FD = FUTURE DEVELOPMENT TRACT
 - I.E. OR IE = IRRIGATION EASEMENT
 - L1 = LINE NUMBER 1, SEE LINE TABLE
 - LK = LAKE TRACT
 - L.M.E. OR LME = LAKE MAINTENANCE EASEMENT
 - L.E. OR LE = TREE/LANDSCAPE EASEMENT
 - LS = STREET TREE EASEMENT
 - NR = NON RADIAL LINE
 - O.R. OR OR. = OFFICIAL RECORDS BOOK
 - OS = OPEN SPACE TRACT
 - PG. = PAGE
 - P.U.E. OR PUE = PUBLIC UTILITY EASEMENT
 - PRM = PERMANENT REFERENCE MONUMENT
 - PCP = PERMANENT CONTROL POINT
 - P.O.C. = POINT OF COMMENCEMENT
 - P.O.B. = POINT OF BEGINNING
 - R.O.W. OR ROW = RIGHT OF WAY
 - S.F. OR SF = SQUARE FEET
 - INST. = INSTRUMENT NUMBER



12800 UNIVERSITY DRIVE, SUITE 175
FORT MYERS, FLORIDA 33907
PHONE: (239) 597-0575 FAX: (239) 597-0578
FLORIDA CERTIFICATE OF AUTHORIZATION # LB-6952
PREPARED BY
MICHAEL A. WARD, PLS LS 5301



LEGEND:

- INDICATES 5/8" IRON PIN WITH CAP, PRM LB 6952
- INDICATES FOUND 5/8" IRON PIN WITH CAP, PRM LB 6952
- ⊙ INDICATES PARKER KALON NAIL WITH DISC, PCP LB 6952
- +— INDICATES CHANGE IN DIRECTION

GENERAL NOTES:

1. ALL DIMENSIONS ARE IN FEET AND DECIMAL PARTS THEREOF.
2. ALL LINES ARE RADIAL TO CIRCULAR CURVE UNLESS NOTED AS NON-RADIAL. RADIAL REFERENCES TO INDIVIDUAL LOT OR TRACT LINES REFER TO THE FRONT RIGHT-OF-WAY LINE AND DO NOT REFERENCE THE RADIAL RELATIONSHIP OF THE REAR OR SIDE LOT/TRACT LINES.
3. BEARINGS ARE BASED ON THE SOUTH LINE OF THE BOUNDARY OF WELLEN PARK GOLF AND COUNTRY CLUB, PHASE 1A, WHERE SAID SOUTH LINE BEARS N88°05'49"W.

WELLEN PARK GOLF AND COUNTRY CLUB, PHASE 1C

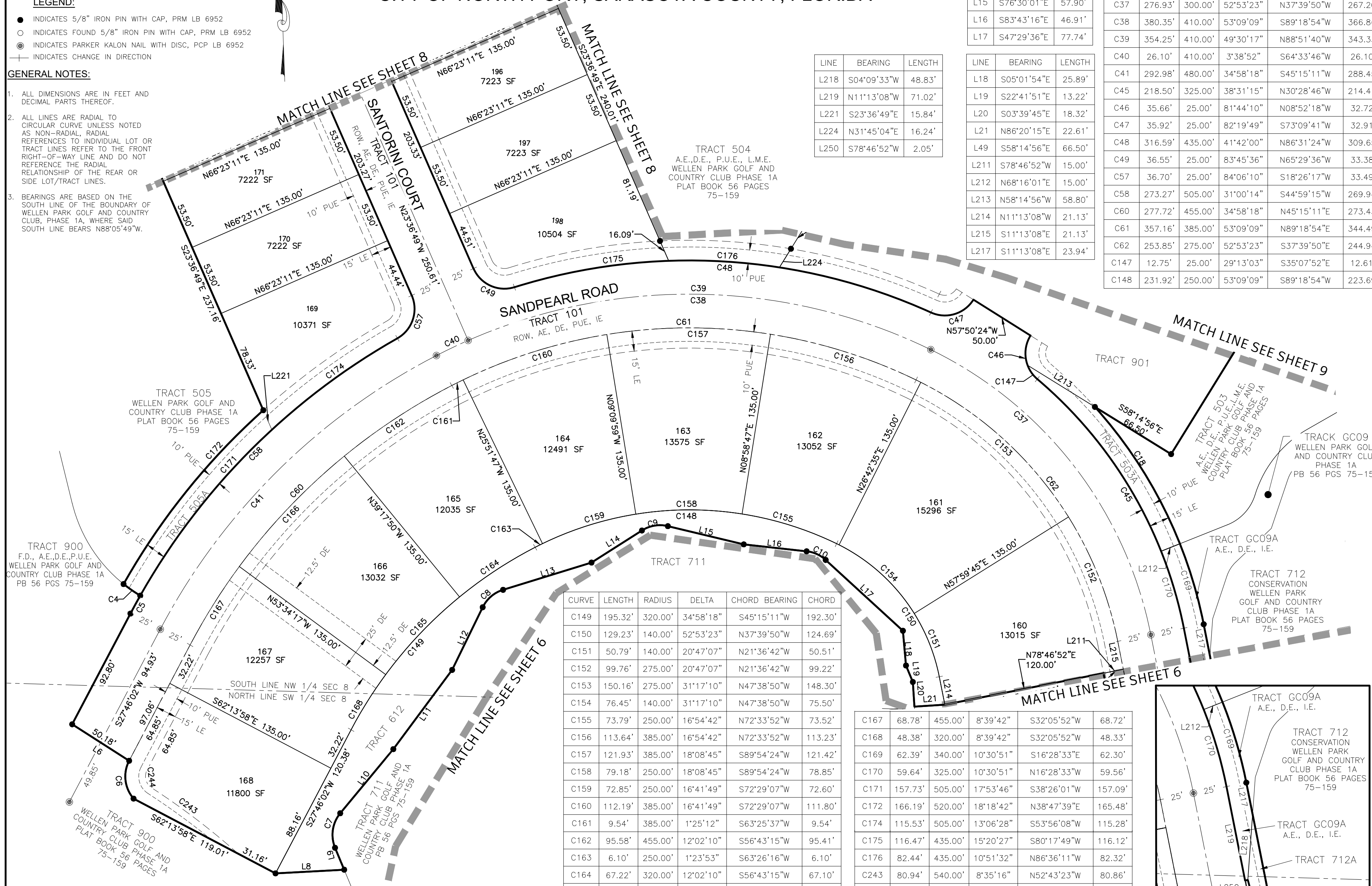
A REPLAT OF TRACT 504 AND A PORTION OF TRACTS
GC08, GC09, 503, 505, 712 AND 900
WELLEN PARK GOLF AND COUNTRY CLUB, PHASE 1A
A SUBDIVISION, RECORDED IN PLAT BOOK 56 PAGES 75-159
SECTION 8, TOWNSHIP 40 SOUTH, RANGE 20 EAST,
CITY OF NORTH PORT, SARASOTA COUNTY, FLORIDA

LINE	BEARING	LENGTH
L6	S57°21'47"E	50.18'
L8	N86°57'48"E	51.04'
L9	N22°38'47"W	17.64'
L10	N39°38'37"E	61.82'
L11	N36°36'01"E	73.19'
L12	N25°59'05"E	51.68'
L13	N72°53'13"E	68.67'
L14	N57°32'43"E	44.36'
L15	S76°30'01"E	57.90'
L16	S83°43'16"E	46.91'
L17	S47°29'36"E	77.74'

LINE	BEARING	LENGTH
L18	S05°01'54"E	25.89'
L19	S22°41'51"E	13.22'
L20	S03°39'45"E	18.32'
L21	N86°20'15"E	22.61'
L49	S58°14'56"E	66.50'
L211	S78°46'52"W	15.00'
L212	N68°16'01"E	15.00'
L213	N58°14'56"W	58.80'
L214	N11°13'08"W	21.13'
L215	S11°13'08"E	21.13'
L217	S11°13'08"E	23.94'

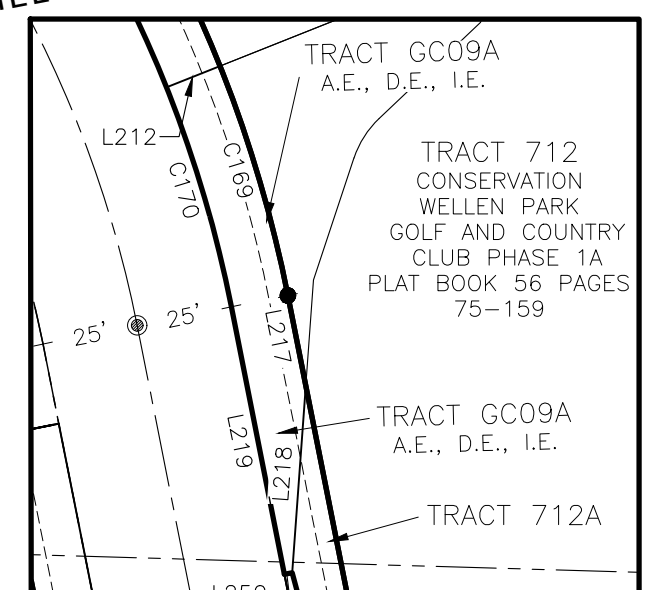
LINE	BEARING	LENGTH
L218	S04°09'33"W	48.83'
L219	N11°13'08"W	71.02'
L221	S23°36'49"E	15.84'
L224	N31°45'04"E	16.24'
L250	S78°46'52"W	2.05'

CURVE	LENGTH	RADIUS	DELTA	CHORD BEARING	CHORD
C4	15.07'	110.00'	7°51'06"	S55°13'50"E	15.06'
C5	15.15'	505.00'	1°43'06"	S28°37'35"W	15.14'
C6	30.05'	25.00'	68°51'49"	S06°39'53"E	28.27'
C7	27.18'	25.00'	62°17'24"	N08°29'55"E	25.86'
C8	20.46'	25.00'	46°54'08"	N49°26'09"E	19.90'
C9	20.05'	25.00'	45°57'16"	N80°31'21"E	19.52'
C10	15.81'	25.00'	36°13'40"	S65°36'26"E	15.55'
C18	182.50'	340.00'	30°45'15"	N26°35'45"W	180.32'
C37	276.93'	300.00'	52°53'23"	N37°39'50"W	267.20'
C38	380.35'	410.00'	53°09'09"	S89°18'54"W	366.86'
C39	354.25'	410.00'	49°30'17"	N88°51'40"W	343.33'
C40	26.10'	410.00'	3°38'52"	S64°33'46"W	26.10'
C41	292.98'	480.00'	34°58'18"	S45°15'11"W	288.45'
C45	218.50'	325.00'	38°31'15"	N30°28'46"W	214.41'
C46	35.66'	25.00'	81°44'10"	N08°52'18"W	32.72'
C47	35.92'	25.00'	82°19'49"	S73°09'41"W	32.91'
C48	316.59'	435.00'	41°42'00"	N86°31'24"W	309.65'
C49	36.55'	25.00'	83°45'36"	N65°29'36"W	33.38'
C57	36.70'	25.00'	84°06'10"	S18°26'17"W	33.49'
C58	273.27'	505.00'	31°00'14"	S44°59'15"W	269.94'
C60	277.72'	455.00'	34°58'18"	N45°15'11"E	273.43'
C61	357.16'	385.00'	53°09'09"	N89°18'54"E	344.49'
C62	253.85'	275.00'	52°53'23"	S37°39'50"E	244.94'
C147	12.75'	25.00'	29°13'03"	S35°07'52"E	12.61'
C148	231.92'	250.00'	53°09'09"	S89°18'54"W	223.69'



CURVE	LENGTH	RADIUS	DELTA	CHORD BEARING	CHORD
C149	195.32'	320.00'	34°58'18"	S45°15'11"W	192.30'
C150	129.23'	140.00'	52°53'23"	N37°39'50"W	124.69'
C151	50.79'	140.00'	20°47'07"	N21°36'42"W	50.51'
C152	99.76'	275.00'	20°47'07"	N21°36'42"W	99.22'
C153	150.16'	275.00'	31°17'10"	N47°38'50"W	148.30'
C154	76.45'	140.00'	31°17'10"	N47°38'50"W	75.50'
C155	73.79'	250.00'	16°54'42"	N72°33'52"W	73.52'
C156	113.64'	385.00'	16°54'42"	N72°33'52"W	113.23'
C157	121.93'	385.00'	18°08'45"	S89°54'24"W	121.42'
C158	79.18'	250.00'	18°08'45"	S89°54'24"W	78.85'
C159	72.85'	250.00'	16°41'49"	S72°29'07"W	72.60'
C160	112.19'	385.00'	16°41'49"	S72°29'07"W	111.80'
C161	9.54'	385.00'	1°25'12"	S63°25'37"W	9.54'
C162	95.58'	455.00'	12°02'10"	S56°43'15"W	95.41'
C163	6.10'	250.00'	1°23'53"	S63°26'16"W	6.10'
C164	67.22'	320.00'	12°02'10"	S56°43'15"W	67.10'
C165	79.72'	320.00'	14°16'26"	S43°33'56"W	79.52'
C166	113.35'	455.00'	14°16'26"	S43°33'56"W	113.06'

C167	68.78'	455.00'	8°39'42"	S32°05'52"W	68.72'
C168	48.38'	320.00'	8°39'42"	S32°05'52"W	48.33'
C169	62.39'	340.00'	10°30'51"	S16°28'33"E	62.30'
C170	59.64'	325.00'	10°30'51"	N16°28'33"W	59.56'
C171	157.73'	505.00'	17°53'46"	S38°26'01"W	157.09'
C172	166.19'	520.00'	18°18'42"	N38°47'39"E	165.48'
C174	115.53'	505.00'	13°06'28"	S53°56'08"W	115.28'
C175	116.47'	435.00'	15°20'27"	S80°17'49"W	116.12'
C176	82.44'	435.00'	10°51'32"	N86°36'11"W	82.32'
C243	80.94'	540.00'	8°35'16"	N52°43'23"W	80.86'
C244	14.80'	10.00'	84°47'03"	N14°37'30"W	13.48'



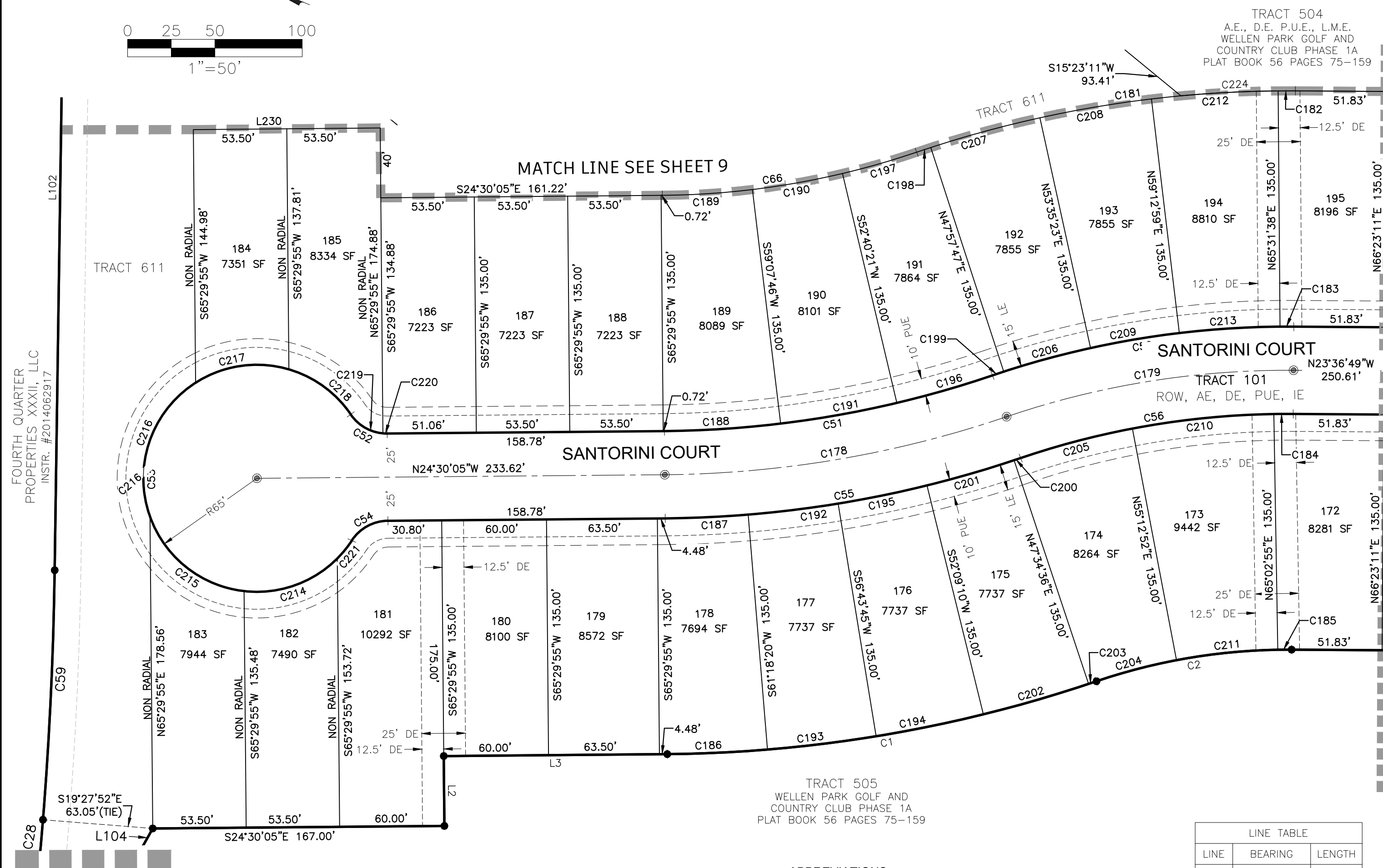
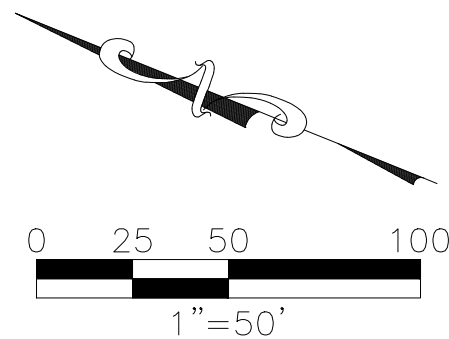
TRACT GC09B DETAIL
SCALE: 1"=50'



12800 UNIVERSITY DRIVE, SUITE 175
 FORT MYERS, FLORIDA 33907
 PHONE: (239) 597-0575 FAX: (239) 597-0578
 FLORIDA CERTIFICATE OF AUTHORIZATION # LB-6952
 PREPARED BY
 MICHAEL A. WARD, PLS LS 5301

WELLEN PARK GOLF AND COUNTRY CLUB, PHASE 1C

A REPLAT OF TRACT 504 AND A PORTION OF TRACTS
 GC08, GC09, 503, 505, 712 AND 900
 WELLEN PARK GOLF AND COUNTRY CLUB, PHASE 1A
 A SUBDIVISION, RECORDED IN PLAT BOOK 56 PAGES 75-159
 SECTION 8, TOWNSHIP 40 SOUTH, RANGE 20 EAST,
 CITY OF NORTH PORT, SARASOTA COUNTY, FLORIDA



CURVE TABLE					
CURVE	LENGTH	RADIUS	DELTA	CHORD BEARING	CHORD
C1	250.36'	785.00'	18°16'23"	S33°38'16"E	249.30'
C2	113.70'	340.00'	19°09'39"	S33°11'38"E	113.17'
C50	175.57'	525.00'	19°09'39"	N33°11'38"W	174.75'
C51	191.36'	600.00'	18°16'23"	N33°38'16"W	190.55'
C52	24.54'	25.00'	56°15'04"	N03°37'27"E	23.57'
C53	331.83'	65.00'	292°30'07"	S65°29'55"W	72.22'
C54	24.54'	25.00'	56°15'04"	S52°37'36"E	23.57'
C55	207.30'	650.00'	18°16'23"	S33°38'16"E	206.43'
C56	158.85'	475.00'	19°09'39"	S33°11'38"E	158.11'
C59	143.08'	2215.00'	3°42'04"	N68°41'06"E	143.06'
C66	148.30'	465.00'	18°16'23"	N33°38'16"W	147.67'
C178	199.33'	625.00'	18°16'23"	N33°38'16"W	198.49'
C179	167.21'	500.00'	19°09'39"	N33°11'38"W	166.43'
C181	220.72'	660.00'	19°09'39"	N33°11'38"W	219.69'
C182	9.90'	660.00'	0°51'33"	N24°02'35"W	9.90'
C183	7.87'	525.00'	0°51'33"	N24°02'35"W	7.87'
C184	11.09'	475.00'	1°20'16"	N24°16'57"W	11.09'
C185	7.94'	340.00'	1°20'16"	N24°16'57"W	7.94'
C186	57.45'	785.00'	4°11'35"	S26°35'52"E	57.44'
C187	47.57'	650.00'	4°11'35"	S26°35'52"E	47.56'
C188	66.70'	600.00'	6°22'10"	S27°41'09"E	66.67'
C189	51.69'	465.00'	6°22'10"	S27°41'09"E	51.67'
C190	52.40'	465.00'	6°27'24"	S34°05'57"E	52.37'
C191	67.61'	600.00'	6°27'24"	S34°05'57"E	67.58'
C192	51.92'	650.00'	4°34'35"	S30°58'57"E	51.90'
C193	62.70'	785.00'	4°34'35"	S30°58'57"E	62.68'
C194	62.70'	785.00'	4°34'35"	S35°33'32"E	62.68'
C195	51.92'	650.00'	4°34'35"	S35°33'32"E	51.90'
C196	57.04'	600.00'	5°26'49"	S40°03'03"E	57.02'
C197	44.21'	465.00'	5°26'49"	S40°03'03"E	44.19'
C198	8.49'	660.00'	0°44'15"	N42°24'21"W	8.49'
C199	6.76'	525.00'	0°44'15"	N42°24'21"W	6.76'
C200	3.98'	650.00'	0°21'04"	S42°35'56"E	3.98'
C201	51.92'	650.00'	4°34'35"	S40°08'07"E	51.90'
C202	62.70'	785.00'	4°34'35"	S40°08'07"E	62.68'
C203	4.81'	785.00'	0°21'04"	S42°35'56"E	4.81'
C204	47.41'	340.00'	7°59'20"	N38°46'48"W	47.37'
C205	66.23'	475.00'	7°59'20"	N38°46'48"W	66.18'
C206	51.56'	525.00'	5°37'36"	N39°13'25"W	51.54'
C207	64.82'	660.00'	5°37'36"	N39°13'25"W	64.79'
C208	64.82'	660.00'	5°37'36"	N33°35'49"W	64.79'
C209	51.56'	525.00'	5°37'36"	N33°35'49"W	51.54'
C210	81.53'	475.00'	9°50'03"	N29°52'07"W	81.43'
C211	58.36'	340.00'	9°50'03"	N29°52'07"W	58.29'
C212	72.70'	660.00'	6°18'40"	N27°37'41"W	72.66'
C213	57.83'	525.00'	6°18'40"	N27°37'41"W	57.80'
C214	58.48'	65.00'	51°32'40"	S43°19'31"E	56.52'
C215	72.37'	65.00'	63°47'41"	S14°20'39"W	68.69'
C216	87.45'	65.00'	77°05'18"	S84°47'09"W	81.01'
C217	55.66'	65.00'	49°03'59"	N32°08'13"W	53.98'
C218	44.65'	65.00'	39°21'12"	N12°04'23"E	43.77'
C219	22.10'	25.00'	50°38'59"	S06°25'30"W	21.39'
C220	2.44'	25.00'	5°36'05"	S21°42'02"E	2.44'
C221	13.22'	65.00'	11°39'17"	S74°55'30"E	13.20'

MATCH LINE SEE SHEET 3

- GENERAL NOTES:**
- ALL DIMENSIONS ARE IN FEET AND DECIMAL PARTS THEREOF.
 - ALL LINES ARE RADIAL TO CIRCULAR CURVE UNLESS NOTED AS NON-RADIAL. RADIAL REFERENCES TO INDIVIDUAL LOT OR TRACT LINES REFER TO THE FRONT RIGHT-OF-WAY LINE AND DO NOT REFER TO THE RADIAL RELATIONSHIP OF THE REAR OR SIDE LOT/TRACT LINES.
 - BEARINGS ARE BASED ON THE SOUTH LINE OF THE BOUNDARY OF WELLEN PARK GOLF AND COUNTRY CLUB, PHASE 1A, WHERE SAID SOUTH LINE BEARS N88°05'49"W.

- LEGEND:**
- INDICATES 5/8" IRON PIN WITH CAP, PRM LB 6952
 - INDICATES FOUND 5/8" IRON PIN WITH CAP, PRM LB 6952
 - ⊙ INDICATES PARKER KALON NAIL WITH DISC, PCP LB 6952
 - ⊕ INDICATES CHANGE IN DIRECTION

- ABBREVIATIONS:**
- A.E. OR AE = ACCESS EASEMENT
 - C1 = CURVE NUMBER 1, SEE CURVE TABLE
 - CM = CONCRETE MONUMENT, AS NOTED
 - CUE = CITY UTILITY EASEMENT
 - D.E. OR DE = DRAINAGE EASEMENT
 - FND = FOUND, AS NOTED
 - FD = FUTURE DEVELOPMENT TRACT
 - I.E. OR IE = IRRIGATION EASEMENT
 - L1 = LINE NUMBER 1, SEE LINE TABLE
 - LK = LAKE TRACT
 - L.M.E. OR LME = LAKE MAINTENANCE EASEMENT
 - L.E. OR LE = TREE/LANDSCAPE EASEMENT
 - LS = STREET TREE EASEMENT
 - NR = NON RADIAL LINE
 - O.R. OR OR = OFFICIAL RECORDS BOOK
 - OS = OPEN SPACE TRACT
 - PS = PAGE
 - P.U.E. OR PUE = PUBLIC UTILITY EASEMENT
 - PRM = PERMANENT REFERENCE MONUMENT
 - PCP = PERMANENT CONTROL POINT
 - P.O.C. = POINT OF COMMENCEMENT
 - P.O.B. = POINT OF BEGINING
 - R.O.W. OR ROW = RIGHT OF WAY
 - S.F. OR SF = SQUARE FEET
 - INST. = INSTRUMENT NUMBER

LINE TABLE		
LINE	BEARING	LENGTH
L2	N65°29'55"E	40.00'
L3	S24°30'05"E	127.98'
L102	S66°50'03"W	467.65'
L104	S84°46'10"E	23.22'
L230	S24°30'05"E	107.00'

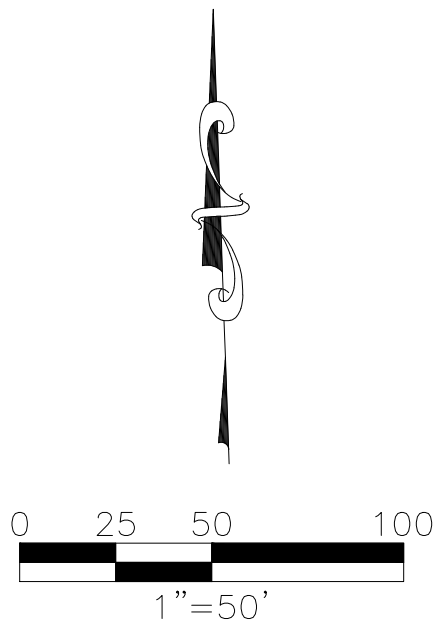


12800 UNIVERSITY DRIVE, SUITE 175
 FORT MYERS, FLORIDA 33907
 PHONE: (239) 597-0575 FAX: (239) 597-0578
 FLORIDA CERTIFICATE OF AUTHORIZATION # LB-6952
 PREPARED BY
 MICHAEL A. WARD, PLS LS 5301

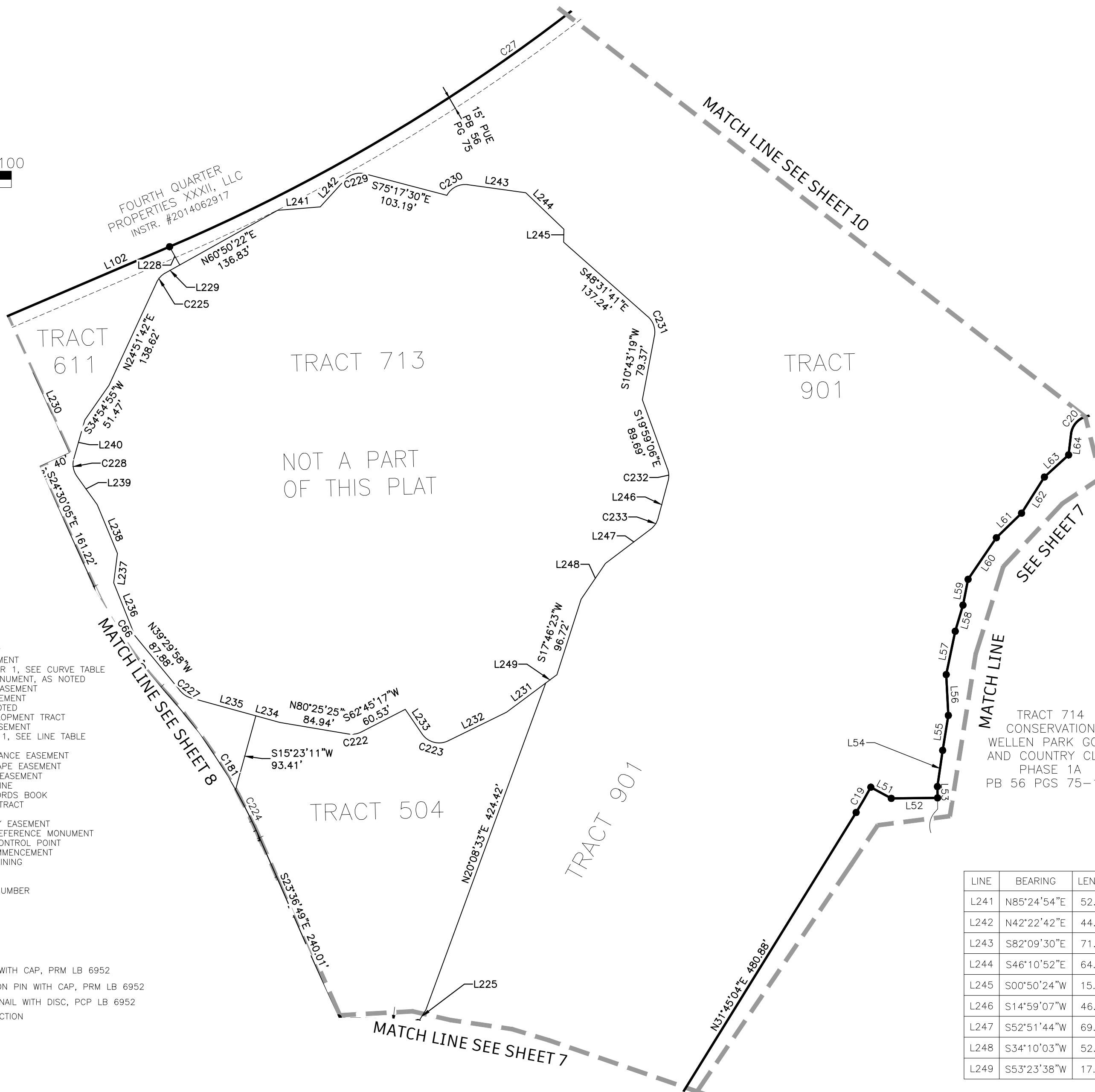
WELLEN PARK GOLF AND COUNTRY CLUB, PHASE 1C

PLAT BOOK _____ PAGE _____
 SHEET 9 OF 10

A REPLAT OF TRACT 504 AND A PORTION OF TRACTS
 GC08, GC09, 503, 505, 712 AND 900
 WELLEN PARK GOLF AND COUNTRY CLUB, PHASE 1A
 A SUBDIVISION, RECORDED IN PLAT BOOK 56 PAGES 75-159
 SECTION 8, TOWNSHIP 40 SOUTH, RANGE 20 EAST,
 CITY OF NORTH PORT, SARASOTA COUNTY, FLORIDA



CURVE TABLE					
CURVE	LENGTH	RADIUS	DELTA	CHORD BEARING	CHORD
C19	35.67'	660.00'	3°05'47"	N30°12'10"E	35.66'
C20	28.85'	25.00'	66°06'36"	N39°51'38"E	27.27'
C21	52.66'	25.00'	120°41'23"	N83°32'56"E	43.45'
C22	33.95'	25.00'	77°48'10"	N86°25'35"E	31.40'
C23	34.35'	25.00'	78°43'24"	N85°49'24"W	31.71'
C24	35.39'	410.00'	4°56'43"	N41°03'56"E	35.38'
C25	528.73'	4076.41'	7°25'54"	N55°08'09"W	528.36'
C26	197.25'	4491.41'	2°30'58"	N49°29'51"W	197.23'
C27	963.21'	2265.00'	24°21'55"	S54°39'06"W	955.96'
C222	16.07'	25.00'	36°49'19"	S81°09'56"W	15.79'
C223	35.72'	25.00'	81°51'32"	N75°11'01"W	32.76'
C225	15.70'	25.00'	35°58'40"	S42°51'02"W	15.44'
C228	22.50'	25.00'	51°33'21"	S09°51'20"E	21.74'
C229	27.20'	25.00'	62°19'49"	S73°32'36"W	25.88'
C230	29.18'	25.00'	66°53'01"	S64°24'00"W	27.55'
C231	25.85'	25.00'	59°15'01"	N18°54'11"W	24.72'
C232	15.26'	25.00'	34°58'13"	N02°29'59"W	15.02'
C233	16.53'	25.00'	37°52'37"	N33°55'26"E	16.23'
C234	215.26'	4541.41'	2°42'57"	N49°35'50"W	215.24'
C235	255.71'	680.00'	21°32'45"	N68°38'16"E	254.21'
C236	184.45'	2315.00'	4°33'54"	S46°54'54"W	184.40'
C237	60.83'	40.00'	87°07'41"	S88°11'48"W	55.13'
C238	28.91'	40.00'	41°24'21"	S18°32'30"W	28.28'
C239	61.97'	40.00'	88°45'44"	S83°37'32"W	55.95'
C240	98.96'	90.00'	63°00'02"	N69°42'38"E	94.05'
C241	158.70'	680.00'	13°22'19"	S85°28'31"E	158.34'



ABBREVIATIONS:

- A.E. OR AE = ACCESS EASEMENT
- C1 = CURVE NUMBER 1, SEE CURVE TABLE
- CM = CONCRETE MONUMENT, AS NOTED
- CUE = CITY UTILITY EASEMENT
- D.E. OR DE = DRAINAGE EASEMENT
- FND = FOUND, AS NOTED
- FD = FUTURE DEVELOPMENT TRACT
- I.E. OR IE = IRRIGATION EASEMENT
- L1 = LINE NUMBER 1, SEE LINE TABLE
- LK = LAKE TRACT
- L.M.E. OR LME = LAKE MAINTENANCE EASEMENT
- L.E. OR LE = TREE/LANDSCAPE EASEMENT
- LS = STREET TREE EASEMENT
- NR = NON RADIAL LINE
- O.R. OR OR. = OFFICIAL RECORDS BOOK
- OS = OPEN SPACE TRACT
- PG. = PAGE
- P.U.E. OR PUE = PUBLIC UTILITY EASEMENT
- PRM = PERMANENT REFERENCE MONUMENT
- PCP = PERMANENT CONTROL POINT
- P.O.C. = POINT OF COMMENCEMENT
- P.O.B. = POINT OF BEGINNING
- R.O.W. OR ROW = RIGHT OF WAY
- S.F. OR SF = SQUARE FEET
- INST. = INSTRUMENT NUMBER

LEGEND:

- INDICATES 5/8" IRON PIN WITH CAP, PRM LB 6952
- INDICATES FOUND 5/8" IRON PIN WITH CAP, PRM LB 6952
- ⊙ INDICATES PARKER KALON NAIL WITH DISC, PCP LB 6952
- +— INDICATES CHANGE IN DIRECTION

LINE TABLE					
LINE	BEARING	LENGTH	LINE	BEARING	LENGTH
L80	N61°29'31"E	18.53'	L50	N31°45'04"E	480.88'
L81	N38°22'52"E	50.67'	L51	S61°20'43"E	28.41'
L82	N53°44'25"E	42.68'	L52	N89°23'03"E	56.55'
L83	N23°12'15"E	33.76'	L53	N00°36'57"W	13.81'
L84	S36°06'22"E	4.32'	L54	N08°10'33"E	44.65'
L85	S88°56'02"E	3.28'	L55	N09°14'20"E	43.21'
L86	N27°30'21"E	11.76'	L56	N02°57'08"W	49.87'
L87	N78°42'43"E	40.86'	L57	N11°43'42"E	54.02'
L88	N57°36'57"E	21.33'	L58	N16°34'44"E	33.23'
L89	N47°31'30"E	34.37'	L59	N11°10'50"E	32.10'
L90	S54°40'20"E	23.32'	L60	N34°12'59"E	61.46'
L91	N47°31'59"E	12.31'	L61	N45°45'20"E	42.88'
L92	N38°06'16"E	52.28'	L62	N32°18'29"E	52.16'
L93	N58°12'20"E	56.54'	L63	N47°33'41"E	40.01'
L94	N45°39'44"W	41.08'	L64	N06°48'20"E	25.79'
L96	N46°27'43"W	24.46'	L65	N72°54'55"E	33.77'
L97	N38°35'35"E	210.40'	L66	N70°43'20"E	65.08'
L98	N31°08'54"E	50.00'	L67	S71°34'12"E	13.83'
L99	N51°25'13"W	47.29'	L68	N72°54'09"E	44.70'
L100	S39°14'40"W	414.73'	L69	S81°03'09"E	57.16'
L101	N48°14'21"W	331.70'	L70	S79°00'37"E	37.18'
L102	S66°50'03"W	467.65'	L71	S68°35'27"E	31.15'
L225	N31°45'04"E	35.16'	L72	S84°31'21"E	36.82'
L228	S29°09'38"E	25.51'	L73	S34°02'28"E	40.26'
L229	N60°50'22"E	20.26'	L74	S68°08'38"E	24.35'
L230	S24°30'05"E	107.00'	L75	S82°10'45"E	32.83'
L231	S53°23'38"W	59.60'	L76	N81°51'06"E	9.26'
L232	S63°53'13"W	79.54'	L77	N37°23'24"E	34.07'
L233	N34°15'15"W	36.45'	L78	S85°48'15"E	38.46'
L234	N74°36'49"W	30.33'	L79	N53°01'59"E	28.31'
L241	N85°24'54"E	52.13'			
L242	N42°22'42"E	44.62'			
L243	S82°09'30"E	71.50'			
L244	S46°10'52"E	64.36'			
L245	S00°50'24"W	15.84'			
L246	S14°59'07"W	46.70'			
L247	S52°51'44"W	69.34'			
L248	S34°10'03"W	52.81'			
L249	S53°23'38"W	17.08'			

LINE	BEARING	LENGTH
L241	N85°24'54"E	52.13'
L242	N42°22'42"E	44.62'
L243	S82°09'30"E	71.50'
L244	S46°10'52"E	64.36'
L245	S00°50'24"W	15.84'
L246	S14°59'07"W	46.70'
L247	S52°51'44"W	69.34'
L248	S34°10'03"W	52.81'
L249	S53°23'38"W	17.08'



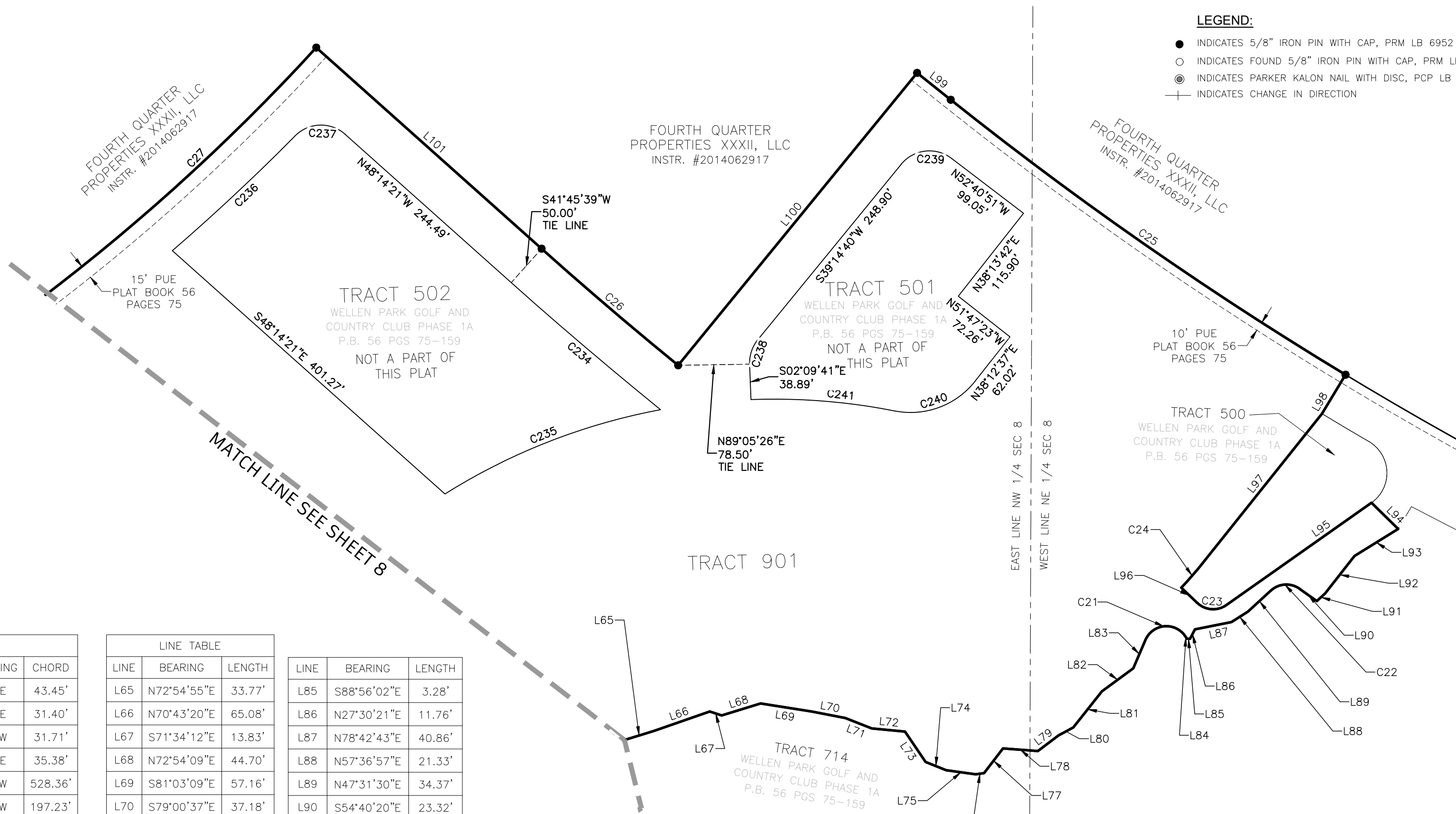
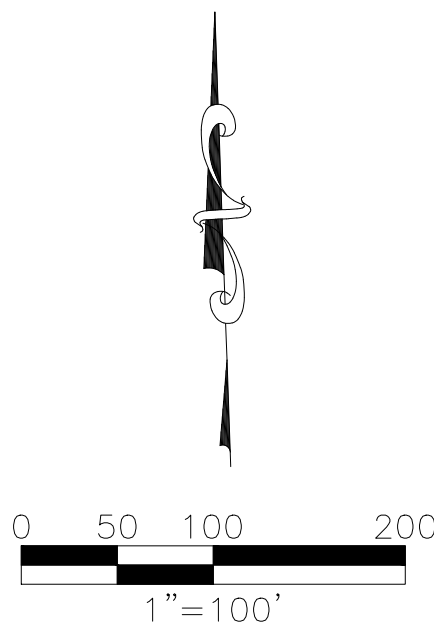
12800 UNIVERSITY DRIVE, SUITE 175
 FORT MYERS, FLORIDA 33907
 PHONE: (239) 597-0575 FAX: (239) 597-0578
 FLORIDA CERTIFICATE OF AUTHORIZATION # LB-6952
 PREPARED BY
 MICHAEL A. WARD, PLS LS 5301

WELLEN PARK GOLF AND COUNTRY CLUB, PHASE 1C

A REPLAT OF TRACT 504 AND A PORTION OF TRACTS
 GC08, GC09, 503, 505, 712 AND 900
 WELLEN PARK GOLF AND COUNTRY CLUB, PHASE 1A
 A SUBDIVISION, RECORDED IN PLAT BOOK 56 PAGES 75-159
 SECTION 8, TOWNSHIP 40 SOUTH, RANGE 20 EAST,
 CITY OF NORTH PORT, SARASOTA COUNTY, FLORIDA

- ABBREVIATIONS:**
- A.E. OR AE = ACCESS EASEMENT
 - C1 = CURVE NUMBER 1, SEE CURVE TABLE
 - CM = CONCRETE MONUMENT, AS NOTED
 - CUE = CITY UTILITY EASEMENT
 - D.E. OR DE = DRAINAGE EASEMENT
 - FND = FOUND, AS NOTED
 - FD = FUTURE DEVELOPMENT TRACT
 - I.E. OR IE = IRRIGATION EASEMENT
 - L1 = LINE NUMBER 1, SEE LINE TABLE
 - LK = LAKE TRACT
 - L.M.E. OR LME = LAKE MAINTENANCE EASEMENT
 - L.E. OR LE = TREE/LANDSCAPE EASEMENT
 - LS = STREET TREE EASEMENT
 - NR = NON RADIAL LINE
 - O.R. OR OR = OFFICIAL RECORDS BOOK
 - OS = OPEN SPACE TRACT
 - PG. = PAGE
 - P.U.E. OR PUE = PUBLIC UTILITY EASEMENT
 - PRM = PERMANENT REFERENCE MONUMENT
 - PCP = PERMANENT CONTROL POINT
 - P.O.C. = POINT OF COMMENCEMENT
 - P.O.B. = POINT OF BEGINNING
 - R.O.W. OR ROW = RIGHT OF WAY
 - S.F. OR SF = SQUARE FEET
 - INST. = INSTRUMENT NUMBER

- LEGEND:**
- INDICATES 5/8" IRON PIN WITH CAP, PRM LB 6952
 - INDICATES FOUND 5/8" IRON PIN WITH CAP, PRM LB 6952
 - ⊙ INDICATES PARKER KALON NAIL WITH DISC, PCP LB 6952
 - +— INDICATES CHANGE IN DIRECTION



CURVE TABLE					
CURVE	LENGTH	RADIUS	DELTA	CHORD BEARING	CHORD
C21	52.66'	25.00'	120°41'23"	N83°32'56"E	43.45'
C22	33.95'	25.00'	77°48'10"	N86°25'35"E	31.40'
C23	34.35'	25.00'	78°43'24"	N85°49'24"W	31.71'
C24	35.39'	410.00'	4°56'43"	N41°03'56"E	35.38'
C25	528.73'	4076.41'	7°25'54"	N55°08'09"W	528.36'
C26	197.25'	4491.41'	2°30'58"	N49°29'51"W	197.23'
C27	963.21'	2265.00'	24°21'55"	S54°39'06"W	955.96'
C234	215.26'	4541.41'	2°42'57"	N49°35'50"W	215.24'
C235	255.71'	680.00'	21°32'45"	N68°38'16"E	254.21'
C236	184.45'	2315.00'	4°33'54"	S46°54'54"W	184.40'
C237	60.83'	40.00'	87°07'41"	S88°11'48"W	55.13'
C238	28.91'	40.00'	41°24'21"	S18°32'30"W	28.28'
C239	61.97'	40.00'	88°45'44"	S83°37'32"W	55.95'
C240	98.96'	90.00'	63°00'02"	N69°42'38"E	94.05'
C241	158.70'	680.00'	13°22'19"	S85°28'31"E	158.34'

LINE TABLE		
LINE	BEARING	LENGTH
L65	N72°54'55"E	33.77'
L66	N70°43'20"E	65.08'
L67	S71°34'12"E	13.83'
L68	N72°54'09"E	44.70'
L69	S81°03'09"E	57.16'
L70	S79°00'37"E	37.18'
L71	S68°35'27"E	31.15'
L72	S84°31'21"E	36.82'
L73	S34°02'28"E	40.26'
L74	S68°08'38"E	24.35'
L75	S82°10'45"E	32.83'
L76	N81°51'06"E	9.26'
L77	N37°23'24"E	34.07'
L78	S85°48'15"E	38.46'
L79	N53°01'59"E	28.31'
L80	N61°29'31"E	18.53'
L81	N38°22'52"E	50.67'
L82	N53°44'25"E	42.68'
L83	N23°12'15"E	33.76'
L84	S36°06'22"E	4.32'

LINE	BEARING	LENGTH
L85	S88°56'02"E	3.28'
L86	N27°30'21"E	11.76'
L87	N78°42'43"E	40.86'
L88	N57°36'57"E	21.33'
L89	N47°31'30"E	34.37'
L90	S54°40'20"E	23.32'
L91	N47°31'59"E	12.31'
L92	N38°06'16"E	52.28'
L93	N58°12'20"E	56.54'
L94	N45°39'44"W	41.08'
L96	N46°27'43"W	24.46'
L97	N38°35'35"E	210.40'
L98	N31°08'54"E	50.00'
L99	N51°25'13"W	47.29'
L100	S39°14'40"W	414.73'
L101	N48°14'21"W	331.70'