



City of North Port

City Commission

4970 City Hall Boulevard
North Port, Florida 34286

Pete Emrich, Mayor
Barbara Langdon, Vice-Mayor
Jill Luke, Commissioner
Debbie McDowell, Commissioner
Alice White, Commissioner

Tel: (941) 429-7000
Fax: (941) 429-7008
www.cityofnorthport.com

November 10, 2022

Elton Langford, Chairman
Board of DeSoto County Commission 201 E. Oak Street, Suite 201
Arcadia, FL 34266

Re: City of North Port Concerns on Mosaic's Proposed DeSoto West and
East Phosphate Mine

Dear Chairman Langford:

The purpose of this letter is to reiterate the City of North Port's (City) continued concerns regarding Mosaic's proposed future development of the DeSoto West and East Phosphate Mines, previously known as the Pine Level and Keys Mines. The City has previously sent letters of concern on July 24, 2018, and June 8, 2021 and understands that in 2018, Desoto County had denied Mosaic's proposed rezoning needed for the phosphate mining operation. We understand that Mosaic has sent Desoto County Commission the attached memo dated June 24, 2022, indicating Mosaic's plan to delay reapplying for rezoning to 2025.

The entire Desoto West Phosphate Mine is proposed within the headwaters of the Big Slough watershed (see attached map). The 195 square mile Big Slough Watershed contributes to the City's main source of drinking water, the Myakkahatchee Creek, and as such, the City is a very interested party to significant land use changes that are proposed for the Watershed. Such land uses can affect both the water quality and water quantity of the City's drinking water supply.

We understand that Mosaic's plan is to start with the Desoto East Phosphate mine which is in the Peace River Watershed. The City has an allocation of water from the Peace River Manasota Regional Water Supply Authority and uses this allocation frequently. Thus, the City is also concerned with how the Desoto East Phosphate mine may affect water quality and water quantity in the Peace River and its tributaries in particularly, Horse Creek.

If DeSoto County rezones this area to allow mining, the City would like to work as a team with Desoto County and regulatory/permitting agencies to ensure that existing regulations are fully met, and that extra protections be provided to protect the City's drinking water supply.

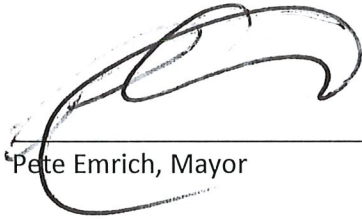
The City is interested in the planning, design and development of these mines and requests being copied on any related information submitted in the future by Mosaic to your agency. The information requested includes any future related permit applications, water quality and quantity monitoring data and any plans submitted by Mosaic towards the development of both the DeSoto Phosphate West and East Mines. The City would like to be given an opportunity to comment on the submitted information. The City would also like to be notified of all upcoming Mosaic workshops related to DeSoto phosphate mining.

City staff would like to remain in contact with Desoto County staff responsible for reviewing mining applications and to work together as a team during the review process.

If you have any questions on our concerns, please do not hesitate to contact City Manager Jerome Fletcher, Assistant City Manager Jason Yarborough, Assistant City Manager Julie Bellia, a North Port City Commissioner or Elizabeth Wong, P.E., Stormwater Manager at office: 941.240.8321, cell: 941.628.1475 or by email: ewong@northportfl.gov.

Sincerely,

The City Commission of the City of North Port Florida



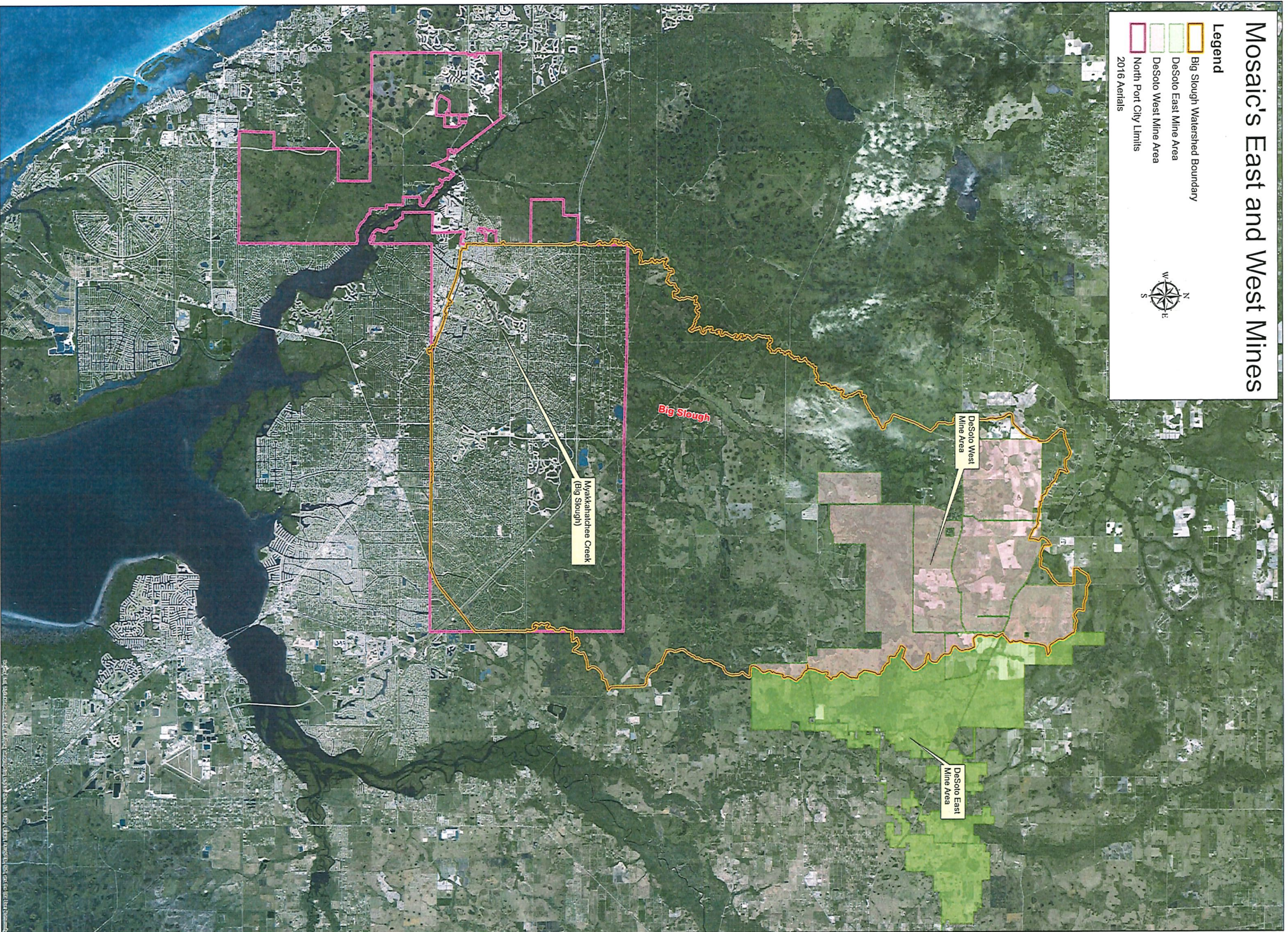
Pete Emrich, Mayor

Attachments: Map of Desoto Phosphate Mines
Mosaic memo dated June 24, 2022

Cc: North Port City Commissioners
A. Jerome Fletcher II, ICMA-CM, MPA
Jason Yarborough, ICMA-CM, Assistant City Manager
Julie Bellia, Assistant City Manager
Elizabeth Wong, P.E. Stormwater Manager, Department of Public Works

Mosaic's East and West Mines

- Legend**
- Big Slough Watershed Boundary
 - Desoto East Mine Area
 - Desoto West Mine Area
 - North Port City Limits
 - 2016 Aerials



Desoto West Mine Area

Desoto East Mine Area

Big Slough

Muckkatandee Creek (Big Slough)



June 24, 2022

To: Mandy Hines, DeSoto County Administrator
Commissioner Elton Langford, Chairman

From: Russell Schweiss, VP Land and Resource Strategies, Mosaic

Re: DeSoto County Phosphate Workshops

DeSoto County and Mosaic Fertilizer, LLC have been working together to implement various commitments of our April 23, 2019 Agreement regarding Mosaic's future DeSoto Mine. One of those commitments was for the County to schedule a series of workshops on the factors used to evaluate Mosaic's request for rezoning its property for mining and the various requirements for a Phosphate Mining Master Plan and associated Operating Permit for phosphate mining in DeSoto County. The workshops were intended to provide information to the County Commissioners about future phosphate mining and reclamation in DeSoto County, to share information with and receive input from county residents, and to provide a forum to communicate and answer questions about Mosaic's proposed DeSoto Mine. Since April 2019, the County has held five workshops that have been well attended by the public, included presentations by Mosaic representatives, and allowed the Commissioners to engage in robust discussions about phosphate mining.

The proposed DeSoto Mine is an integral component of Mosaic's comprehensive mining strategy in Florida. In recent months, Mosaic's senior management has reviewed its comprehensive mining strategy, and although our DeSoto mineral reserves continue to play an important role in that strategy, the timing for development of those reserves has changed. With the permanent closure of Mosaic's Plant City Concentrates facility, our rate of Florida rock consumption has been reduced, thereby delaying the need date for DeSoto mine construction. Consequently, the County's review of Mosaic's pending applications and the *de novo* public hearings before the Board can be postponed. To better align with our strategic plan, we anticipate the County's review of our existing applications would need to begin in 2025.

Given the new, longer timeline for seeking County approvals for the proposed DeSoto Mine, we believe the schedule for public workshops under the Agreement should be revisited. Delaying the remaining workshops to occur closer in time to the County's review and action on Mosaic's applications would provide a more timely and effective public forum for a discussion of phosphate mining. The County may even decide to hold updated workshops on topics already addressed in past public workshops, in the event the makeup of the Board changes significantly.

For the foregoing reasons, Mosaic is requesting that the County agree to postpone additional public workshops under the Agreement for the next 12 to 18 months. We

understand that scheduling public workshops is entirely within the discretion of the Commissioners but believe those workshops would provide a more valuable opportunity to exchange information and ideas if held closer to the actual public hearings on Mosaic's applications.

We look forward to continued conversations with the community and local organizations about the significant value of our business in Central Florida, future opportunities for DeSoto County and the critical role we play in domestic food security.