



PZAB – DMP Application

02.02.23

New Behavioral Health Hospital
501 East Price Boulevard
North Port, Florida 34288



What Will We Treat?

+ General Mood Disorders

- Depression
- Anxiety
- Bipolar Disorder
- Traumatic Experience Care

+ Thought Disorders

- Disturbance of thought and perception
- Neurocognitive decline

+ Geriatric Psychiatry

+ Dual Diagnosis / SUD

+ Child and Adolescent Psychiatry

+ Outpatient and Other Services

- Intensive Outpatient Services
- Partial Hospitalization Programs
- ECT



Services Provided

Admissions:

- + Referrals are required (most usually coming from an area ED or other medical providers), and assessments are completed by Qualified Medical Professionals for admission or referral to outpatient services.
- + No Emergency Department on site
- + There is an ambulance bay for the transport of patients, with no sirens or noise disturbance.



Services Provided

Stay:

- + Patients receive comprehensive care and treatment by a multidisciplinary team of medical professionals, including: psychiatric physicians, nurse practitioners, primary medicine and specialty physicians, registered nurses, social workers and therapists, psychologists, adjunctive therapy providers, case managers, and other specialty providers as needed for the care of the whole person.
- + Patients engage in a variety of structured group and individual therapy programs throughout their day.



Discharge:

- + Patients receive a robust outpatient plan at discharge including transportation to their destination.
- + Patients who are deemed a danger to themselves, others, or gravely disabled may be subject to involuntary treatment until their condition improves.



A Safe and Healing Environment

- + Controlled Access in and out of the Facility and between Nursing Units
- + 24-hour Video Surveillance of Lobby, Outdoor, and Common Areas
- + Regular Patient Checks
- + Therapeutic Environment for Patient Care



Site Information / Zoning Confirmed for Use



- + Located southeast of intersection of Price Boulevard and Toledo Blade Boulevard
- + Approximately 14.5 acres
- + Zoned PCD – Planned Community Development
– Activity Center 5 – Midway
- + Hospital Use is Permitted

Aerial View

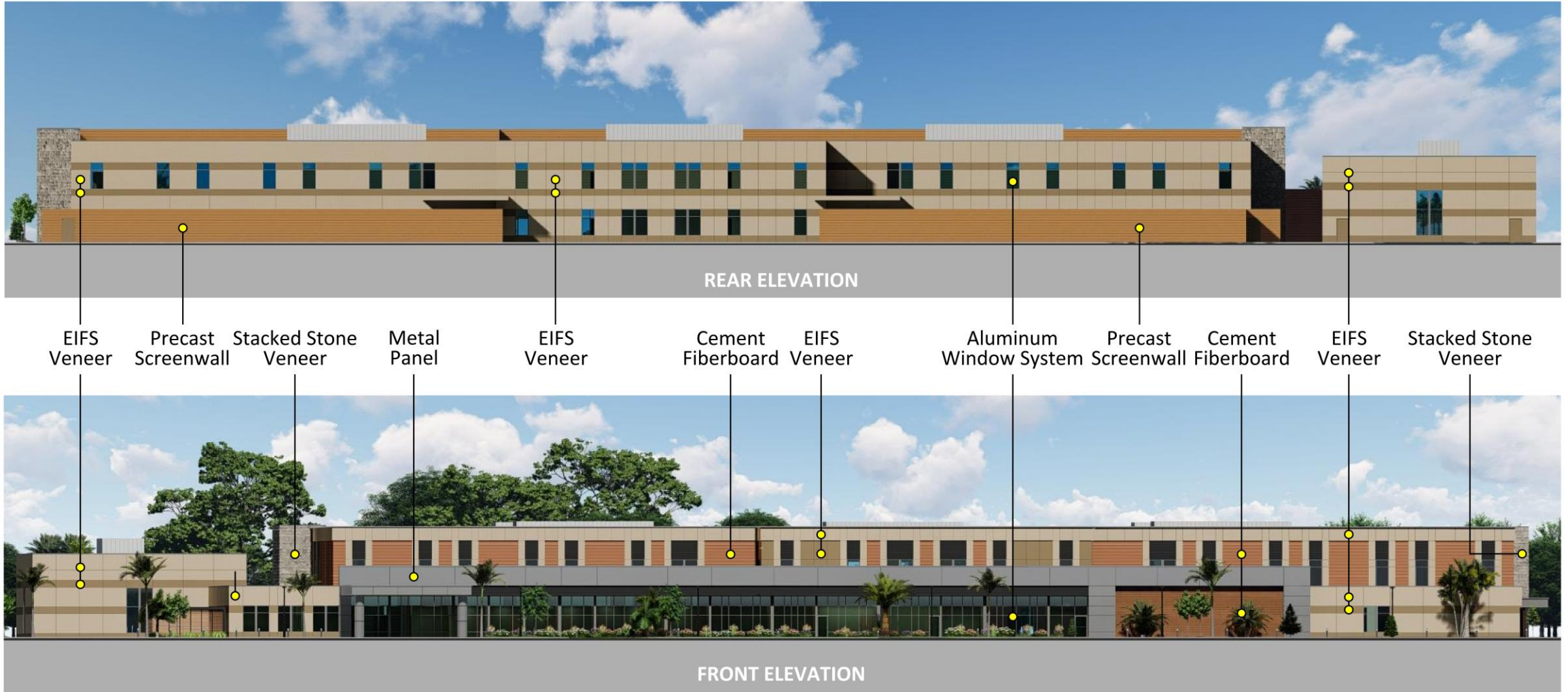


9

New Behavioral Health Hospital
North Port, Florida

ACADIA
HEALTHCARE

Exterior Materials



Front View



11

New Behavioral Health Hospital
North Port, Florida

ACADIA
HEALTHCARE